

# A Smart Street Lighting System Using Solar Energy

Aditya Dhadse, Shymaz Sheikh, Gaurav Panghate, Pallavi Khade and

Amruta Musale

Electrical Engineering Department

Abha Gaikwad Patil Collage Of Engineering Nagpur

**Abstract**— This paper demonstrates a prototype for a smart street-lighting system, in which a number of DC street lights are powered by a photovoltaic (PV) source. A battery is added to store the excess energy of the solar panel, which can later be retrieved at night time, or whenever the sunlight is being obstructed by clouds or other forms of shading. A charge controller is used to protect the battery from overcharging and to control the overall system operation. Furthermore, the system is expanded to include a motion sensing circuit, and a dust-cleaning circuit. The overall result is a smart and efficient street lighting system, which can be implemented as a stand-alone off-grid system, or connected to the rest of the grid as part of a bigger system.

**Keywords**—Solar Energy; Smart Systems; Photovoltaics;

## I. INTRODUCTION

In the past few years, the Smart Grid has gained a lot of popularity, mainly due to the fact that it promises a more intelligent, efficient, and reliable use of the power resources, while also providing a better quality of service to the customers. The advances in the technology of renewable energy sources have also contributed to the increased dependence on renewable energy, as opposed to the conventional fossil-based sources. In this paper, we demonstrate an idea for using renewable energy sources; namely, solar energy, to power a street lighting system, which could alleviate a lot of stress on the conventional power grid, and take us a step further in the process of moving towards a more intelligent power grid.

We suggest powering street lights completely using solar energy by connecting the lights to photovoltaic (PV) panels, which are accompanied by a set of batteries and a charge controller in order to store energy at day time, and provide it back for lighting the streets during night-time. Energy conservation at night is also essential when there is no movement on the streets; thus, our system is expanded to include a motion-sensing circuit to activate the use of street lights only when the lighting is necessary. An additional feature is added to the PV panel, which is a dust cleaning circuit, whose purpose is to clean the PV panel from dust whenever it accumulates on top of it. This helps keep the efficiency of the panel at reasonable levels, and prevents it from decreasing due to accumulated dust.

We performed both hardware and software design, where the hardware part included several circuits, such as

the motion sensing circuit, the dust cleaning circuit, and the main circuit that connects the street light and the PV panel, while the software portion of the design focused on developing the control algorithm, which puts together all the hardware parts, and controls the operation of the different circuits in the system.

The software used to run this system was the Matlab/Simulink, which was used for controlling the system operation, as well as monitoring it and verifying its conditions. To ensure proper system operation, several important parameters were monitored including the solar irradiation, the open circuit voltage, the short circuit current, the input and output power to the PV panel, in addition to the status of the dust cleaning device and the motion sensor, all of which were monitored and recorded periodically once every second. While for this project all the monitoring and control was performed off-grid, the ideas presented can also be used if the street lighting system was connected to the grid. The overall goal of this project is to develop a prototype for an intelligent street lighting system, which would minimize (or in this case completely eliminate) the use of electricity coming from the grid, and retrieve all the required energy from solar panels attached to it. It is also important to develop ways to improve the operation of the system, so we added the features of motion sensing, and dust cleaning, which would reduce the losses due to unnecessary lighting, and would increase the overall system efficiency by periodically reducing the amount of dust covering the solar panel.

The rest of the paper is organized as follows. Section II presents a summary of related literature. Section III describes the main circuit and the motion sensing circuit used in the system, and explains their operation. Section IV presents the dust cleaning circuit and details its operation. The details of the MATLAB/Simulink code are presented in Section V, which also explains the operation of the system in general. Section VI outlines the results of the project. Section VII provides an analysis of the system efficiency, and Section VIII concludes the paper.

## II. REVIEW OF RELATED LITERATURE

A number of studies were presented in the literature that targeted various aspects of smart street lighting systems. In this section, we summarize the ones that were more relevant to our work. In [1], the authors suggest using LED DC street

lights rather than traditional AC street lights; due to their higher efficiency, longer lifetime, lower maintenance costs, and the fact that they are mercury-free, making them environment-friendly. Similar to the LED lamps are the high intensity discharge lamps (HID) that could also be implemented. HID lamps acquire high luminous efficacy and good color rendition, along with their relatively long lifetime [2]. In another study, the authors showed that if the street lighting systems in the city were upgraded to LED, a 64% energy saving is achieved, and 33192 tons of equivalent carbon dioxide are avoided without even applying the renewable energy sources [3].

The work in [4] relates the street lighting system to the overall power grid through the concepts of load demand and renewable power generation. The results obtained from a 132W LED system are compared with typical results of HID lamps of similar power levels.

Developing new technologies to further control and manage street lighting systems was the subject of many research efforts in the literature. In one such study, communications topologies to control the street lighting systems are presented through developing a street lamp system utilizing the general packet radio service (GPRS), power line carrier, or the global system for Mobile communications (GSM) transmissions as presented in [5]

Other studies such as the ones in [6] and [7] focus on intelligent street lighting systems. They include the design of a wireless data network-based street lighting system capable of controlling and monitoring a system that contains a number of street lights using the ZigBee protocol.

In another study, research was conducted in Egypt to design a maximum power point tracker (MPPT) for the street lighting system, which can possibly solve the Egyptian peak point crisis of load demand if the system is widely installed, thus handling a commendable portion of the country's demand [8].

The effect of dust on PV panels was thoroughly studied in [9], where efficiency degradation of the PV panel due to dust deposition was verified. Samples of dust ranging from (0 to 1.963 mg/cm<sup>2</sup>) were deposited on the glass covering of the PV panel. The results show a degradation of short circuit current from 0-49%, respectively. Dust is a major concern to PV panels' efficiency; thus many solutions emerged to get rid of it. One innovative solution is to apply an Electrodynamic screen across the PV panel, as depicted in [10]. The electrodes of the screen are activated by high voltage, low frequency (5-10 Hz) pulses. Accumulated dust particles are charged electrostatically and repelled by electrostatic forces, causing the deposited dust to be dispersed.

Street lighting in Jordan consumes 2% of the total electric energy consumption every year. In this paper it is suggested powering the street lights completely using solar energy by connecting the lights to PhotoVoltaic (PV) panels, which are accompanied by a set of batteries with a charge controller in order to store energy at day time, and provide it back for lighting the streets during night-time. Energy conservation at night is also essential when there is no movement on the streets, thus in this design a motion-

sensing circuit is used to only activate street lights when the lighting is necessary. Further features are added to the PV panel, including a dust cleaning circuit, which cleans the PV panel from dust whenever it accumulates on top of it, which keeps the efficiency of the panel at reasonable levels, and prevents it from decreasing.

### III. THE MAIN CIRCUIT, AND THE MOTION SENSING CIRCUIT

The main circuit of this system is shown in Fig. 1. During daytime, the PV panel provides energy to charge the battery, and during nighttime, the battery provides power to the main load; i.e., the street light. The charge controller is necessary to prevent the battery from overcharging during the day time, and control the interaction between the circuit elements.

The motion sensing circuit is also an important part of this system, as it contributed directly to reducing the power consumption in the main circuit. Depending on the amount of traffic on the street, there could be times where no vehicles are passing by especially during late night or early morning hours, when traffic is usually minimal. During these times, there is usually no need for street lights to be on, as there is no use for them, which is why a motion sensor circuit would provide lots of savings in power.

The motion sensing circuit consists mainly of a Passive Infrared (PIR) motion sensor, and a relay module. As shown in Fig. 2, whenever a motion occurs, the PIR sensor triggers the relay module to connect the charge controller with the street light. Details of the operation of the PIR sensor can be found in [11]. If it is night time, the light will be turned ON. Note that the PV panel and the battery are connected to the charge controller, which controls the operation of the main circuit by charging the battery during day time, and controlling the light operation during night time.

### IV. DUST CLEANING CIRCUIT

The other important circuit in our design is the dust cleaning circuit. Dust accumulated for six months decreases the efficiency of the PV panel by 70% of its original value [12], so it is important to develop a solution that would reduce the impact of this highly important issue. Moreover, it has been found that fine dust particulates significantly deteriorate the efficiency of the PV panel more than their coarser peers [13]. The dust cleaning circuit has been divided into a number of stages: the short circuit current stage, the output voltage stage, the input power stage, and the blower stage. From the first two stages the output power of the PV panel can be calculated in Simulink, and then compared with the input power. The input power is taken from a pyranometer signal. If the two quantities did not match and the pyranometer is reading full-sun or near full-sun reading, then a triggering signal will be sent to the blower to activate it.

Figure 3 shows how to obtain the value of the short circuit current of an operating system, which is then sent to the main control board; the Arduino MEGA 2560 Board. The Arduino board is an open source microcontroller

programmable board, which can be easily programmed via Matlab, and was chosen in this project for its ease of use, and versatility. Matlab initiates a triggering signal once every 10 minutes for a period of 1 second during which the short circuit current reading is sent to the Arduino board. During the shortening of the PV panel, the charge controller forces the battery to short as well, which can cause a problem. This, however, can be resolved by using the same signal to force an open-circuit across the battery's terminals while the PV panel is shorted, as shown in Fig 4.

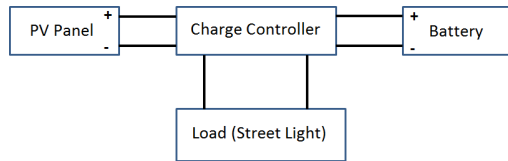


Fig.1: Charge Controller Combination with the Load, PV Panel, and Battery.

The instantaneous output voltage of the PV panel is entered into the Matlab program using a voltage divider, as shown in Fig. 5.

The input power is taken from the pyranometer's reading after multiplying it with the PV panel's efficiency and area. However this signal from the pyranometer needs to be amplified in order to be accepted by the Arduino. The pyranometer amplification stage is shown in Fig. 6. With all the previous quantities determined, Matlab decides whether or not to trigger the relay (shown in Fig. 7) for a certain period of time in order to blow away the dust. While in this system we used an AC blower, this can be replaced with a DC blower powered from the battery, if the off-grid system is required.

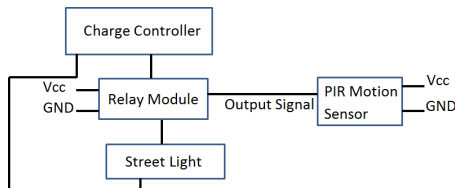


Fig.2: The Motion Sensor Control Design of the Street-Light.

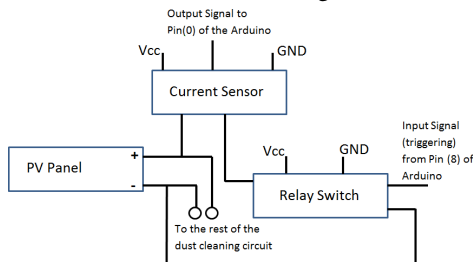


Fig.3: The Short-Circuit Current Reading Stage of the Dust Cleaning Circuit.

### V. SIMULINK CODING

The main brain behind the operation of this system was the Arduino MEGA 2560. The Arduino controls the entire operation of the system including the main circuit, the charge controller, and the dust cleaning circuit.

Programming the Arduino was conducted via block-diagram coding in the Simulink environment, which is part of the Matlab software [14], as shown in Fig. 10. In this section, we provide a brief description of the operation of this code.

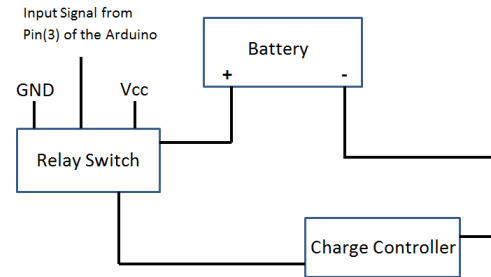


Fig.4: The Battery Short-Circuit Prevention Circuit

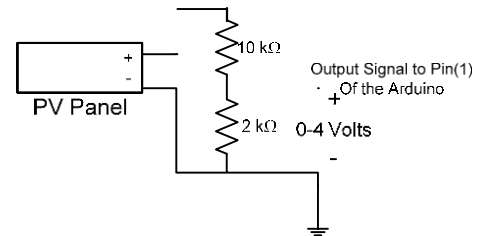


Fig.5: Output voltage reading stage of the dust dealing circuit.

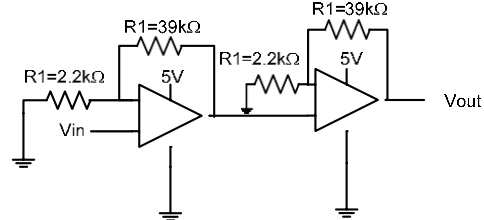


Fig.6: The Amplification of the Pyranometer's Output Voltage.

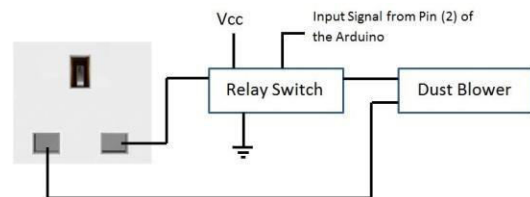


Fig.7: The Blower Stage of the Dust Cleaning Circuit.

Figs. 8 and 9 show the experimental setup as seen in the laboratory environment, with all devices labeled.

First of all, energy consumed in the system is calculated by incrementing a counter every time the motion sensor detects movements, and then multiplying the counter by the power rating of the light and by the amount of time during which the light the light is ON; that is, 20 seconds per each signal of the motion sensor, and the resultant consumed energy will be displayed after it has been converted to kWh. This is shown on the bottom right portion of Fig. 10.

The first analog input (top left) represents the short-circuit current reading, which is converted to Amperes, and saved it in a memory location on the Arduino board. The lower portion represents the output voltage reading, and the conversion process to Volts. Unlike the short-circuit current,

which requires shortening the terminals of the panel, and acquiring a reading, there is no need to save the value of the output voltage because the reading is continuous and is displayed in real time.

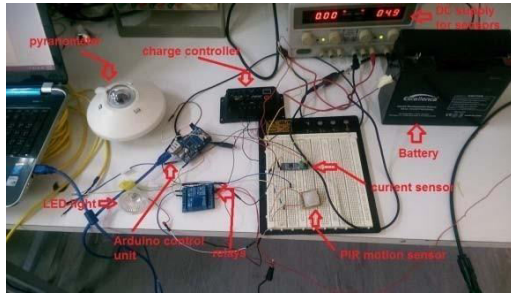


Fig. 8 -Laboratory Setup



Fig. 9 - Laboratory Setup Including the Solar Panel

Both values of current and voltage are multiplied to yield the actual maximum power that the PV panel is able to produce. The lower left portion obtains the pyranometer's reading, and converts it into  $W/m^2$ , after multiplying it by the panel's efficiency and area. The resulting value is then compared with the output power previously found. Depending on this comparison operation (shown on the bottom of Fig. 10), and by taking the maximum and minimum derate factors of dust into account, a signal is sent to the relay module responsible for triggering the blower. This signal will be sent if the two previous power quantities did not match AND the pyranometer was giving a non-cloudy reading. The upper right portion of Fig. 10 shows the

pulse generator responsible for triggering the relay module that shorts the PV panel for 1 second every 10 minutes (while also open-circuiting the battery at that same second) to obtain the value of the short circuit current.

### VI. EXPERIMENTAL RESULTS

A number of graphs were obtained when running the system explained above, and in this section we show the results obtained, and we explain them as they relate to the objective of our project. The two cases that were studied represent a sunny day and a cloudy one.

Figure 11 shows the solar radiation during 50 minutes of time on a cloudy day. As can be seen in the graph, there is a high amount of intermittency in the power received by the solar panel due to the effect of clouds constantly disrupting the availability of sun rays. Figures 12 and 13 demonstrate the short circuit current and the output voltage of the PV panel, respectively, during fifty minutes of time on cloudy day.

Figure 14 shows the irradiance on a sunny day. While there are a few short spikes due to sudden cloud shading, during which the power is significantly reduced, the amount of solar irradiance is relatively stable around  $1000kW/m^2$ , which is typical for a mostly sunny day. Figures 15 and 16 illustrate the short circuit current and the open circuit voltage during the same fifty minutes of time on a sunny day.

As can be seen from the figures, during cloudy days, the amount of solar energy that we obtain is generally less than in the case of the sunny day. More importantly, however, the large amount of variation that can be seen in the voltage, current, and consequently the power, is mainly due to the constant variation in the amount of solar energy obtained during the cloudy day.

These measurements show the proper operation of the system in terms of its ability to monitor the amount of solar irradiance. These values are then compared to the readings of the pyranometer, as explained earlier to help detect whether or not there is dust accumulated on the panel, and

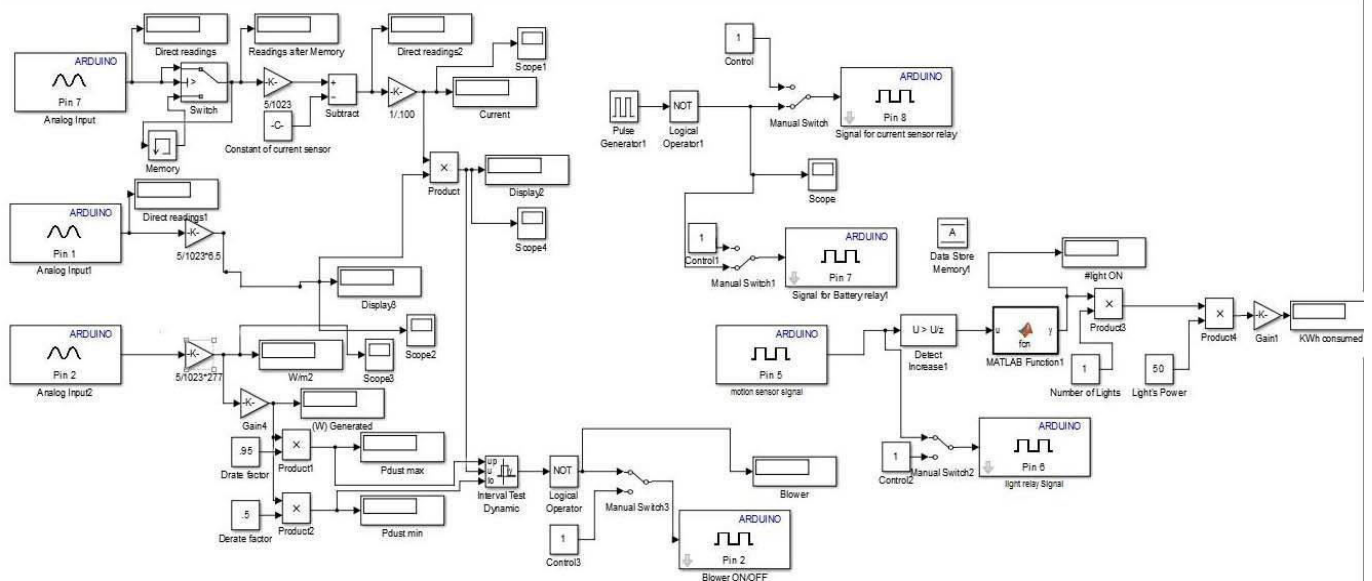


Figure 10 - A Block Diagram of the Simulink Code

obtain a more efficient operation for the system.

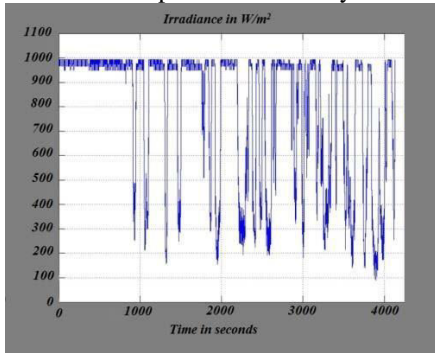


Fig.11: The Solar Irradiance During Fifty Minutes of Time on a Cloudy Day.

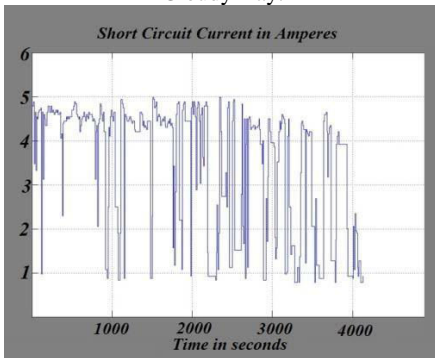


Fig.12: The Short Circuit Current of the PV Panel During Fifty Minutes of Time on a Cloudy Day.

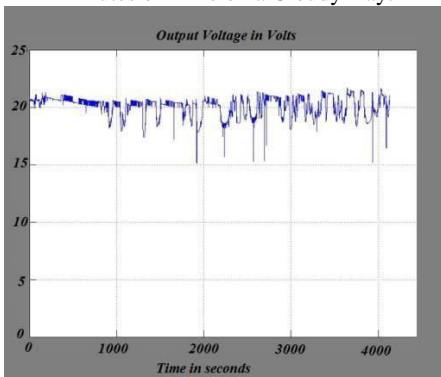


Fig.13: The Output Voltage of the PV Panel During Fifty Minutes of Time on a Cloudy Day.

Finally, the system can be controlled entirely from the computer using the Simulink code described earlier. Manual control has also been added to manually turn on -or off- every component of the system, including the dust blower and the DC light.

Having the system installed considering the previous constraints, particulates of sand (so as to simulate a dust condition) were scattered on top the PV panel gradually. The PV panel's output voltage and short circuit current started to decrease, and consequently so did the output power of the panel, whereas the pyranometer indicated a certain input power, that did not yield the desired output power in the simulink program. Therefore, the blower started to operate in order to restore the normal operation of the PV panel; that is, the operation without dust.

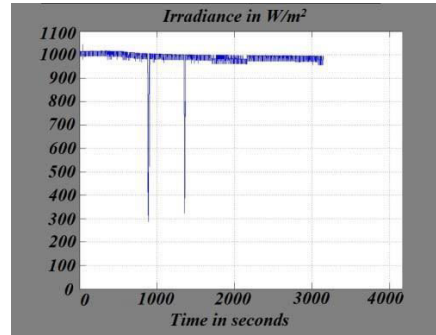


Fig.14: The Solar Irradiance During Fifty Minutes of Time on a Sunny Day.

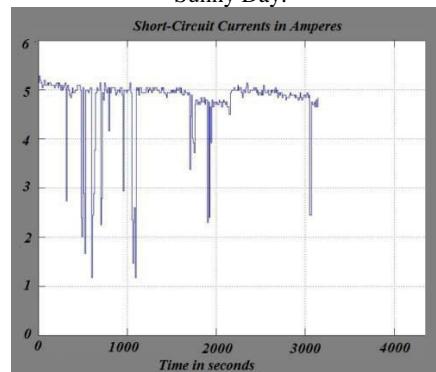


Fig.15: The Short Circuit Current of the PV Panel During Fifty Minutes of Time on a Sunny Day.

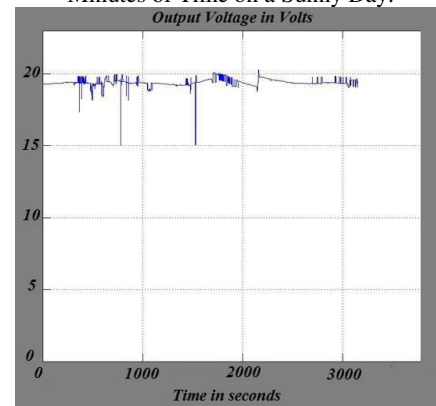


Fig.16: The Output Voltage of the PV Panel During Fifty Minutes of Time on a Sunny Day.

## VII. EFFICIENCY OF THE SYSTEM

An efficiency analysis can be conducted at any instance of time, especially when the blower is turned on. A comparison of efficiencies before and after the blower's operation can verify the adequacy of the blower, the accumulation amount, and the overall system response to dust. Figure 17 presents the flowchart of efficiency analysis that can be conducted by model base programming platform Simulink.

It must be mentioned that the maximum theoretical efficiency limit for a PV panel is unlikely to be achieved, even in ideal conditions. The proposed system increases the efficiency of the PV panel by dealing with an external condition; that is dust, in order to achieve the maximum practical efficiency of the PV panel. To further enhance the

efficiency of cleaning, more than one blower at several angles of the PV panel can be installed in order to effectively dispose of all remaining dust particles, taking all possible angles of the PV panel (with equidistant spacing) into account.

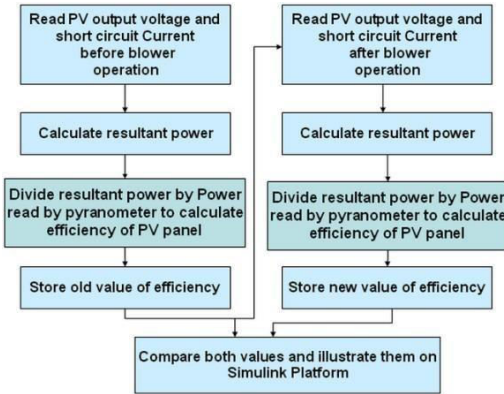


Fig.17: Flowchart of efficiency analysis programming on Matlab Simulink.

### VIII. CONCLUSION

This paper presents a smart street lighting system, in which a conventional street light is modified to obtain its power from solar energy. Additional features were added that improve the operation of the system either by reducing the overall power consumption, which was achieved by using a motion sensor, or by using a dust cleaning circuit, which constantly keeps the efficiency of the panel at a certain maximum value.

Matlab's Simulink, the same program that controls the operation of the system, illustrates output power, output voltage, and short circuit current during real time, as well as calculating the energy consumed by the DC lights. Future work for this project include adding more intelligent features to the system such as communication capabilities, data logging, and on-grid connection capability. Proposed topologies to connect a PV system with the grid include the multifunctional bidirectional converters that rely on a predetermined switching mechanism and the integration of two flyback converters, such as the one described in [15].

### REFERENCES

[1] Chun-An Cheng, Chien-Hsuan Chang, Tsung-Yuan Ching, and Fu-Li Yang, "Design and implementation of a Single-Stage Driver for supplying an LED Street-lighting Module with Power Factor Corrections".  
 [2] Huang-Jen Chiu, Yu-Kang Lo, Chun-Jen Yao, and ShihJen Cheng, "Design and Implementation of a Photovoltaic High-Intensity-Discharge Street Lighting System".  
 [3] Roberto Barraza Garcia, Gillberto Velazquez Angulo, Jaime Romero Gonzalez, Edith Florews Tavizon and Jose Ignacio Huertas Cardozo, "LED Street Lighting as a Strategy for Climate Change Mitigation at Local Government Level",

Chi Kwan Lee, Sinan Li, S. Y. (Ron) Hui, "A Design Methodology for Smart LED Lighting Systems Powered By Weakly Regulated Renewable Power Grids".

[4] Fabio Leccese, "Remote-Control System of High Efficiency and Intelligent Street Lighting Using a ZigBee Network of Devices and Sensors".

[5] Gustavo W. Denardin, Carlos H. Barriquello, Rafael A. Pinto, Marcelo F. Silva, Alexandre Campos and Ricardo N. do Prado, "An intelligent system for street lighting control and measurement".

[6] Gustavo W. Denardin, Carlos H. Barriquello, Alexandre Campos and Ricardo N. do Prado, "An Intelligent System for Street Light Monitoring and Control".

[7] Mokhtar Ali, Mohammad Orabi, Emad Abdelkarim, Jaber A Abu Qahouq, and Abdelalo El Aroudi, "Design and Development of Energy-Free Solar Street LED Light System".

[8] Jim J. John, Sonali Warade ; Abhishek Kumar ; Anil Kottantharayil, "Evaluation and Prediction of Soiling Loss on PV modules with Artificially Deposited Dust".

[9] Arash Sayyah, Mark N. Horenstein, Malay K. Mazumder, "Performance Restoration of Dusty Photovoltaic Modules Using Electrodynamic Screen".

[10] "How Infrared motion detector components work". Non-commercial research page by Glolab Corporation, Retrieved from:

[11] Monto Mani, Rohit Pillai, "Impact of dust on Solar Photovoltaic (PV) performance: Research Status, Challenges and Recommendations".

[12] El-Shobokshy M S and Hussein F M, , "Effect of dust with different physical properties on the performance of photovoltaic cells Solar Energy"

[13] Maicol Flores de Melo, William Dotto Vizzotto, Pablo J. Quintana, , André Luís Kirsten, Marco Antonio Dalla Costa, and Jorge Garcia, "Bidirectional Grid-Tie Flyback Converter Applied to Distributed Power Generation and Street Lighting Integrated System .