

A PLATFORM FOR RESOURCE SHARING AND SOCIAL WELFARE

CHOUKI RAGHAVA¹, AMBATI ARCHANA², ALIGIRI SHIVA PRASAD³, GUNTAPALLI
SANTHI SRI⁴, MR.M.SATHISH REDDY⁵

1 Department of CSE-AIML, Sreyas Institute of Engineering and Technology, Hyderabad, India

2 Department of CSE-AIML, Sreyas Institute of Engineering and Technology, Hyderabad, India

3 Department of CSE-AIML, Sreyas Institute of Engineering and Technology, Hyderabad, India

4 Department of CSE-AIML, Sreyas Institute of Engineering and Technology, Hyderabad, India

5 Associate Professor, Department of CSE-AIML, Sreyas Institute of Engineering and Technology, Hyderabad, India

1.0 Abstract

In today's world, even though technology is growing very fast, many NGOs, donors, volunteers, and people who need help still struggle to connect with each other properly. There is no single platform where everyone can come together, and because of this, many problems occur such as food wastage, improper distribution of resources like clothes and study materials, and lack of clarity in social service activities. To solve this problem, the project Community Connect is designed as a web-based platform that connects all these people in one place. Through this system, donors can give resources and also track them, NGOs can manage and approve requests, volunteers can handle the collection and delivery work, and administrators can monitor everything smoothly. The platform includes useful features like role-based access, real-time tracking, location-based NGO search, and a dashboard to show the overall impact. It is developed using simple technologies like HTML, CSS, JavaScript, and backend tools such as Node.js or Django, along with databases like MySQL or MongoDB. By making the entire process more organized and transparent, this platform helps in reducing wastage, improving coordination, and making social service more effective.

2.0 Keywords

Web Development, Social Welfare, Resource Sharing, NGO System, Community Platform, Public Service

3.0 Introduction

In today's society, helping others is considered one of the most important responsibilities of individuals and organizations. There are many people who face difficulties in their daily lives due to lack of basic needs such as food, clothing, education, and proper living conditions. At the same time, there are also many people who are willing to help by donating money, food, or other resources. In

addition, several NGOs and volunteer groups are actively working to support such people. However, even though both groups exist in large numbers, there is still a major gap between them. This gap mainly occurs because there is no proper system that connects everyone efficiently.

People who need help often do not know where to go or whom to contact. They may depend on local sources or word of mouth, which is not always reliable. On the other hand, donors may have the intention to help but are unsure about where their contribution is actually needed. Because of this confusion, many times resources are not used properly. Some areas may receive more help than required, while other areas may not receive any support at all. This imbalance reduces the overall effectiveness of social service activities.

Another important issue is the lack of proper coordination among NGOs, volunteers, and donors. Many organizations still follow traditional methods like maintaining records manually, using phone calls, or depending on personal communication. These methods are slow and can lead to errors. There is also a chance of duplication of work, where the same task is done multiple times unnecessarily. In addition, there is often no proper tracking system to monitor donations and requests. This creates a lack of transparency, and donors may feel unsure about how their contributions are being used. Over time, this can reduce trust and discourage people from participating in such activities.

To overcome these challenges, there is a need for a system that can bring all these users together in a simple and effective way. Community Connect is developed with this idea in mind. It is a web-based platform that acts as a bridge between people who need help and those who are willing to provide it. The system allows users to register and perform actions based on their role. For example, a needy person can raise a request, a donor can provide resources, NGOs can verify and approve the requests, and volunteers can manage the collection and delivery process.

One of the key advantages of this platform is that it improves communication. Instead of depending on manual methods, users can interact through a single system. This makes the process faster and more organized. The platform also provides real-time updates, so users can know the status of their requests or contributions at any time. This feature helps in building trust among users, as everything is visible and properly recorded.

The system also focuses on location-based services. This means users can find nearby NGOs or areas where help is required. This makes it easier to deliver resources quickly and efficiently. For example, if someone wants to donate food, they can find the nearest place where it is needed instead of wasting time searching manually. This not only saves time but also reduces wastage of resources.

Another important feature of Community Connect is its structured workflow. Every request and donation follows a proper process, starting from submission to approval and then delivery. This reduces confusion and ensures that all activities are handled in an organized way. It also helps administrators to monitor the system and make sure everything is running smoothly.

The platform is designed in such a way that it is easy to use for everyone. Even people who do not have much technical knowledge can understand and use it without difficulty. The simple design and clear navigation make it accessible to a wide range of users. This is important because the success of such a system depends on how easily people can use it.

In addition to improving efficiency, Community Connect also focuses on creating a positive social impact. By reducing wastage and improving distribution, it ensures that resources reach the right

people at the right time. It also encourages more people to participate in social service activities, as they can clearly see how their contributions are making a difference. This creates a sense of satisfaction and motivates them to continue helping others.

The platform also supports larger goals related to social development. It contributes to reducing poverty, improving access to basic needs, and promoting equality within society. By connecting people and organizations, it helps in building stronger communities where everyone supports each other.

In conclusion, Community Connect is designed to solve one of the major problems in social service systems, which is the lack of proper connection and coordination. By using modern technology, it provides a simple and effective solution that benefits all users. It not only makes the process of giving and receiving help easier but also builds trust and transparency among people. This project is a step towards creating a more connected, responsible, and supportive society where help reaches those who truly need it.

4.0 Proposal :

4.1 Overview

In today's world, helping people in need is not just important but also a shared responsibility. Many individuals depend on support from NGOs, donors, and volunteers for basic needs like food, clothing, and education. Even though there are many people willing to help, the process of connecting them with those who actually need help is not always smooth. Most of the time, there is confusion, delay, or lack of proper communication, which makes the whole system less effective.

One of the main problems is that many organizations still follow traditional methods to manage their work. They depend on phone calls, manual records, or personal contacts to handle requests and donations. These methods may work on a small scale, but when the number of people increases, it becomes difficult to manage everything properly. Sometimes, help reaches late, or it reaches the wrong place. In some cases, the same area receives repeated support while another area is completely ignored. This leads to wastage of resources and reduces the overall impact of social service activities.

Another issue is that there is no proper system to track what is happening. Donors often do not know where their contributions are going, and volunteers may not have clear instructions about their tasks. NGOs also find it difficult to manage multiple requests at the same time. Because of this, the entire process becomes slow and unorganized. In situations where urgent help is needed, such delays can create serious problems.

To overcome these challenges, the Community Connect system is introduced as a better and smarter solution. Instead of handling everything manually, this system brings all users together on a single online platform. Here, donors, NGOs, volunteers, and people in need can easily connect with each other. The system is designed in such a way that it makes the process simple, clear, and easy to manage. In this platform, every user has a role. A person who needs help can raise a request, a donor can provide resources, an NGO can verify the request, and a volunteer can deliver the support. All these activities are connected, so the process becomes smooth and well-organized. The system works in a flexible way, which means it can adjust according to the situation. For example, if there is a sudden urgent request, the system can quickly identify available resources and arrange support without delay.

One of the most useful features of this system is that it gives importance to priority. Not all requests are the same, and some need immediate attention. The system understands this and gives preference to urgent cases so that help reaches those who need it the most. This makes the platform more effective and meaningful.

The system also helps in handling unexpected situations. If a volunteer is not available or a donation cannot be completed, the system can find an alternative solution. This reduces the chances of failure and ensures that the process continues without major issues. Everything is updated in real time, so users always know what is happening.

Another important benefit of Community Connect is transparency. Since all activities are recorded and visible, users can trust the system more. Donors can see how their contributions are used, and NGOs can manage their work in a better way. This encourages more people to participate and support social causes.

Overall, the Community Connect system provides a simple and practical way to improve social service activities. It replaces slow and confusing traditional methods with a clear, organized, and flexible approach. By using this system, resources can be managed better, delays can be reduced, and help can reach the right people at the right time. This makes the entire process more efficient and helpful for society.

Core System Objectives

- To improve the efficiency of resource distribution by making sure that available resources are delivered to the right people at the right time, even when there are changing demands and limited availability.
- To ensure fairness in the system by giving priority to more urgent and critical requests, so that people in serious need receive help first, especially during times of shortage.
- To maintain reliability of the system by handling unexpected situations such as delays, cancellations, or unavailability of volunteers, and by quickly adjusting the process to continue smooth operation.
- To design a flexible and continuously updating system that can work step by step in real time, making it suitable for practical use and capable of handling real-world social service challenges effectively.

4.2 Motivation and Problem Statement

In today's society, social service activities are very important for supporting people who are in need of basic resources like food, clothing, and education. Many NGOs, donors, and volunteers are actively involved in helping others, but the systems used to manage these activities are often not efficient. Most existing methods are traditional and fixed in nature, which makes them difficult to use in situations where conditions keep changing. Because of this, problems such as delays, miscommunication, and improper distribution of resources are very common.

One of the main issues is that problems in the system usually start small but gradually become bigger. For example, a delay in responding to a request or assigning a task incorrectly may not seem serious at first, but over time it can affect the entire process. These small issues can combine and lead to situations where resources do not reach the right people, or help is delayed when it is needed the most. This reduces the overall effectiveness of social service efforts.

Another major problem is the lack of flexibility in existing systems. Most systems follow a fixed procedure and cannot adjust quickly to real-time situations. In real life, the demand for help is not constant. It may suddenly increase during emergencies or decrease at other times. At the same time, the availability of resources and volunteers may also change. A system that cannot adapt to these changes will not be able to function properly.

Although some modern solutions have been developed, they still have limitations. Some systems are too complex and require more technical knowledge, while others focus only on one part of the process, such as donation or request handling. Very few systems are able to manage all aspects together, including demand changes, resource allocation, priority handling, and issue management. Also, many systems do not give importance to priority, treating all requests equally even when some require urgent attention.

To solve these problems, the proposed system **Community Connect** is introduced as a better and more flexible solution. The system is designed to work in a dynamic way, which means it can adjust based on current conditions. It connects all users in one platform and ensures smooth communication between them. Requests can be managed properly, resources can be allocated efficiently, and urgent cases can be given higher priority.

The system also handles unexpected situations like delays or unavailability of volunteers by providing alternative solutions. It maintains proper tracking of all activities, which improves transparency and builds trust among users. At the same time, the platform is designed to be simple and easy to use, so that anyone can access it without difficulty.

In conclusion, the main motivation behind this project is to improve the current social service system by making it more efficient, adaptable, and user-friendly. The problem lies in poor coordination, lack of real-time response, and absence of priority-based handling. The proposed system aims to solve these issues by providing a structured and practical solution that ensures resources reach the right people at the right time.

4.3 System Architecture

The proposed system, **Community Connect**, is designed using a layered and modular architecture so that each part of the system performs a specific function in a clear and organized way. This type of design helps in making the system easy to understand, maintain, and extend in the future. Instead of handling everything in one place, the system is divided into layers and modules, which work together step by step to complete the overall process. This structured approach improves performance, reduces errors, and makes the system more reliable.

The system mainly consists of three important layers: Presentation Layer, Application Layer, and Database Layer. These layers interact with each other in a proper sequence to ensure smooth functioning of the platform.

The Presentation Layer is the top layer where users interact with the system. It includes the user interface developed using HTML, CSS, and JavaScript. This layer is responsible for displaying information and collecting input from users. All types of users such as donors, NGOs, volunteers, and beneficiaries access the system through this layer. The design is kept simple and user-friendly so that even people with basic technical knowledge can use the platform easily. Forms for login, registration, request submission, and donation are handled here.

The Application Layer is the middle layer and acts as the brain of the system. It processes all the data received from the presentation layer and performs the required operations. These layers interact with each other in a proper sequence to ensure smooth functioning of the platform. This layer is built using backend technologies like Node.js, Django, or Flask. It includes multiple modules that handle different tasks. For example, the User Management module controls registration and login, the Request Handling module manages requests from users, the Donation Management module tracks contributions, and the Volunteer Coordination module assigns and monitors delivery tasks. The Admin module supervises all activities and ensures the system runs smoothly. This layer also maintains the workflow logic, ensuring that every process follows the correct sequence from request to delivery.

The Database Layer is the bottom layer where all data is stored and managed. It uses databases like MySQL or MongoDB to store information such as user details, donation records, requests, and activity logs. This layer ensures data security, consistency, and quick retrieval whenever required. All the information processed in the application layer is stored here and can be accessed later for tracking and reporting.

In addition to these layers, the system includes some important supporting features. One such feature is role-based access control, where each user is given permissions based on their role. This ensures that users can only perform actions that are allowed to them, improving security. Another feature is real-time tracking, which allows users to see the current status of requests and donations. This increases transparency and trust among users.

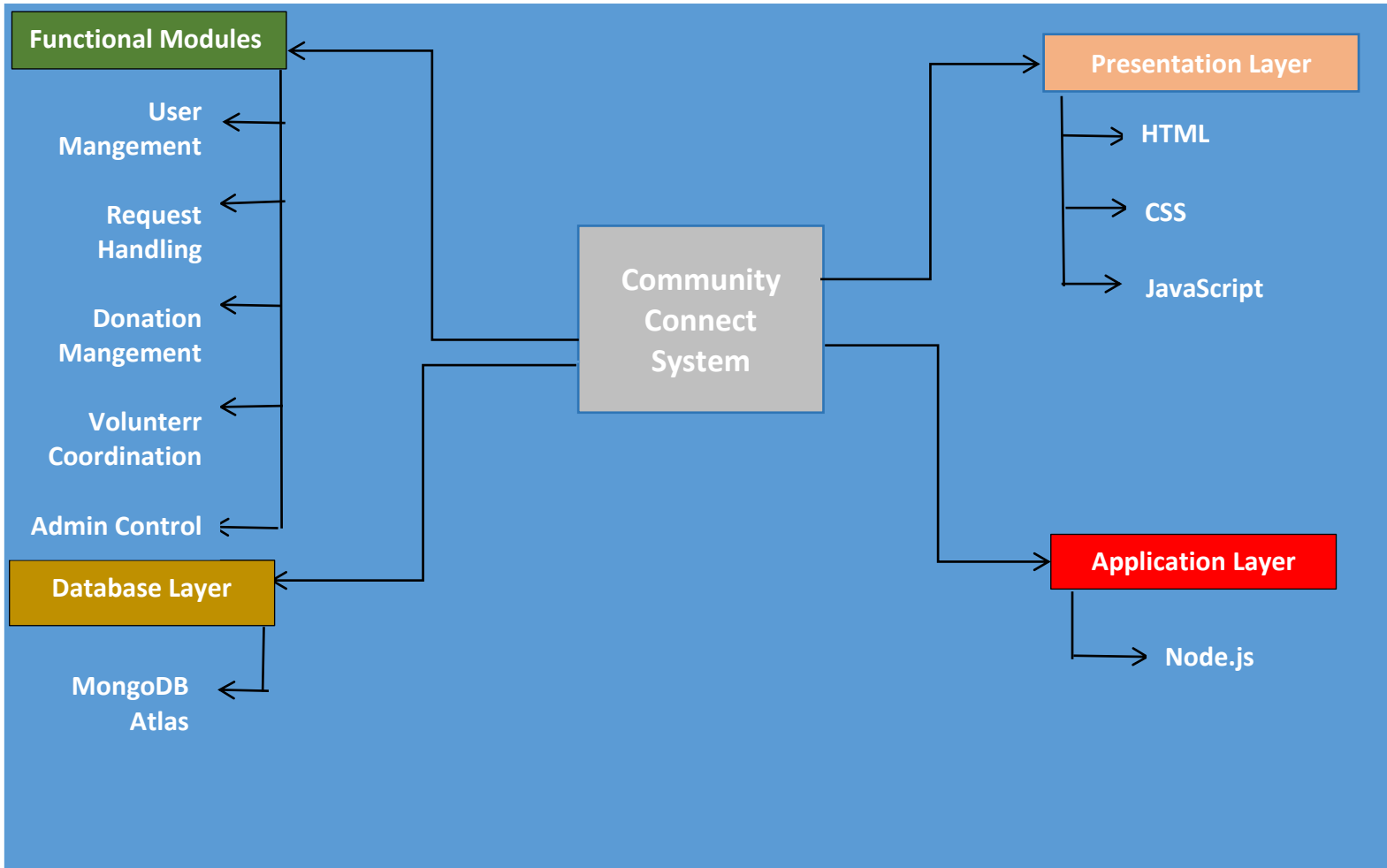
The system follows a clear workflow. First, users register and log in. A beneficiary raises a request for help. This request is verified by an NGO to check its authenticity. Once approved, the system assigns the task to a volunteer. A donor provides the required resources, and the volunteer delivers them to the beneficiary. After completion, the system updates the status and stores the information for future reference. This continuous process ensures proper coordination between all users.

The architecture is also designed to handle real-time situations. For example, if a volunteer is unavailable, the system can assign another volunteer. If a request is urgent, it can be given higher priority. This flexibility makes the system more practical and useful in real-world conditions.

The performance of the system can be evaluated using simple measures such as efficiency and response time. Efficiency can be understood as how well resources are utilized, while response time indicates how quickly a request is fulfilled. These factors help in analyzing and improving the system over time.

Overall, the system architecture of Community Connect provides a strong foundation for managing social service activities in an organized and efficient way. By separating different functions into layers and modules, the system becomes easy to manage, scalable, and reliable. This design ensures that the platform can handle multiple users and tasks without confusion, making it suitable for real-world use.

System Architecture



4.4 Layered Network Topology (Table Format)

The layered network topology of the system can be clearly understood using the following table representation. Each layer has a specific role and responsibility, which helps in maintaining an organized and efficient system

4.4.1 Functional Layered Topology

Layer Name	Components Included	Purpose	Activities Performed
Interface Layer	Web App, Mobile App	User interaction	Login, registration, request submission
Service Layer	Application Server	Business logic processing	Validates data, processes requests
Data Layer	Database	Data storage	Stores user data, requests, donation records

This model focuses on how the system is divided based on functions.

4.4.2 Data Flow Layered Topology

Layer Name	Input	Process	Output
Input Layer	User requests, donations	Data collection	Raw input data
Processing Layer	Verified input data	Validation & matching	Processed data
Output Layer	Processed data	Delivery & notification	Final service to users

This shows how data moves through the system step by step.

4.4.3 Control-Based Layered Topology

Layer Name	Responsible Entity	Control Type	Responsibilities
Strategic Layer	Admin	High-level control	System monitoring, decision making
Tactical Layer	NGOs	Mid-level control	Request approval, coordination
Operational Layer	Volunteers	Execution control	Resource delivery, task execution

This model explains who controls what in the system.

4.4.4 Communication Layered Topology

Layer Name	Communicates With	Purpose	Example
User Layer	System Interface	Send/receive requests	User submits request
System Layer	NGOs & Volunteers	Process and forward data	Assigns tasks
Service Layer	End Beneficiaries	Deliver final service	Delivery confirmation

This focuses on interaction between components.

4.4.5 Expanded Three-Tier Topology

Layer Level	Sub Components	Responsibilities	Example Tasks
Top Layer	Admin Panel, NGO Dashboard	Monitoring, verification, decision making	Approve requests, manage users
Middle Layer	Task Manager, Volunteer System	Coordination and execution	Assign volunteers, track delivery

Layer Level	Sub Components	Responsibilities	Example Tasks
Bottom Layer	Donor Interface, User Interface	Resource input and request generation	Donate items, request help

4.5 Performance Metrics for System Evaluation

In the proposed Community Connect system, different performance measures are used to understand how well the system is working. These measures help in checking whether resources are properly used, requests are fulfilled on time, and the system is efficient in handling multiple users. Each metric focuses on a specific aspect of the system and together they provide a complete evaluation.

4.5.1 Resource Utilization Efficiency

This metric is used to measure how effectively the available resources are being used. In a platform like Community Connect, resources such as food, clothes, or money are donated by users. It is important that these resources reach the right people without being wasted. Resource utilization efficiency compares the amount of resources actually delivered to the total resources available.

$$\text{Efficiency} = (\text{Resources Delivered} / \text{Resources Available}) \times 100$$

A higher value of efficiency indicates that most of the donated resources are successfully utilized. This shows that the system is working properly and minimizing wastage.

4.5.2 Request Fulfillment Rate

The request fulfillment rate measures how many user requests are successfully completed by the system. Every time a beneficiary raises a request, the system tries to fulfill it with the help of donors and volunteers. This metric helps in understanding the reliability of the system.

$$\text{Fulfillment Rate} = (\text{Completed Requests} / \text{Total Requests}) \times 100$$

If the fulfillment rate is high, it means the system is capable of handling user needs effectively. A lower rate may indicate issues such as lack of resources or delays in processing.

4.5.3 Response Time

Response time refers to how quickly the system reacts to a user request. It is an important factor, especially in situations where help is urgently needed. This metric calculates the time difference between when a request is made and when it is fulfilled.

$$\text{Response Time} = \text{Delivery Time} - \text{Request Time}$$

Lower response time means faster service, which improves user satisfaction and trust in the system.

4.5.4 System Throughput

System throughput measures the number of requests the system can process within a specific time period. It helps in evaluating the capacity and performance of the system, especially when there are many users at the same time.

$$\text{Throughput} = \text{Number of Requests Processed} / \text{Time}$$

A higher throughput indicates that the system can handle more workload efficiently without delays.

Overall Importance

These performance metrics play a crucial role in evaluating how effectively the Community Connect system operates in real-world conditions. They provide a clear understanding of whether the system is meeting its main objectives, such as efficient resource utilization, timely request handling, and reliable service delivery. By analyzing these metrics, it becomes easier to identify both the strengths and the areas that need improvement within the system.

In addition to basic evaluation, these metrics help in making better decisions for system enhancement. For example, if the response time is high, steps can be taken to improve coordination between volunteers and NGOs. Similarly, if the resource utilization efficiency is low, strategies can be introduced to reduce wastage and ensure better distribution of available resources. This makes the system more practical and effective in handling real-life situations.

4.6 Summary

The key contributions of the proposed Community Connect system can be further expanded as follows:

Contribution ID	Contribution Title	Description
C1	Structured System Modeling	The system is designed using a layered architecture that clearly represents real-world interactions between users, NGOs, and volunteers.
C2	Priority-Based Allocation	Introduces a method to handle requests based on urgency, ensuring critical needs are addressed first while maintaining fairness.
C3	Real-Time Request Processing	Processes user requests dynamically as they arrive, improving response time and system efficiency.
C4	Fault Handling and Recovery	Includes mechanisms to detect issues like delays or failures and reassign tasks to ensure completion of requests.
C5	Efficient Resource Management	Ensures optimal use of available resources by minimizing wastage and improving allocation strategies.
C6	Scalable System Design	The system is designed to handle increasing numbers of users and requests without performance degradation.
C7	User-Friendly Interface	Provides a simple and easy-to-use interface for donors, volunteers, and beneficiaries to interact with the system.
C8	Transparency and Accountability	Maintains proper tracking of requests and donations, ensuring trust and reliability among users.
C9	Real-Time Notifications	Keeps users updated through alerts and notifications about request status, delivery, and approvals.
C10	Data Management and Storage	Efficiently stores and manages user data, request details, and transaction records for future reference.

5. Experimental Setup

The experimental setup of the proposed Community Connect system is designed to simulate real-world conditions in a controlled and flexible environment. The system is developed as a web-based application using JavaScript, which allows dynamic interaction between users and efficient handling of requests. This setup ensures that the system can be easily tested, modified, and deployed without requiring complex infrastructure. The use of modern web technologies also makes the platform accessible from different devices, improving usability and reach.

The software environment plays a major role in the implementation of the system. JavaScript is used as the core programming language to handle system logic such as request processing, priority handling, and task assignment. HTML and CSS are used to design an interactive and user-friendly interface where users can register, submit requests, and track their status. If backend support is included, Node.js is used to manage server-side operations such as data handling and communication between different modules. For storing user data and request details, databases like MongoDB or Firebase are used, which provide fast and scalable data management. Visualization libraries such as Chart.js are used to display performance metrics in the form of graphs and charts, making it easier to analyze system behavior.

To clearly represent the software configuration, the following table is used:

Component	Description
Programming Language	JavaScript for system logic and simulation
Frontend	HTML, CSS, JavaScript for user interface
Backend	Node.js (optional) for server-side processing
Database	MongoDB / Firebase for storing system data
Visualization	Chart.js for graphs and performance analysis
Development Tools	Visual Studio Code for coding and debugging
Operating System	Windows / Linux

The hardware setup required for this system is minimal, which makes it suitable for academic as well as practical implementation. The system can run smoothly on a standard desktop or laptop without the need for high-end specifications. This ensures that the project is cost-effective and easy to implement. However, better hardware can improve performance, especially when handling multiple users or large datasets.

The hardware requirements are summarized below

Component	Minimum Requirement	Recommended Requirement
Processor	Dual-Core Processor	Intel i5 or higher
RAM	4 GB	8 GB or more
Storage	500 MB	1 GB or more
System Type	Desktop / Laptop	Desktop / Laptop

Component	Minimum Requirement	Recommended Requirement
Internet	Required	High-speed internet preferred

The testing environment is carefully designed to evaluate the system under different real-life scenarios. Instead of using fixed inputs, the system generates dynamic data such as varying numbers of user requests and resource availability. This helps in testing how the system performs when conditions change over time. Different scenarios such as resource surplus, resource shortage, and fault conditions are included to observe system behavior in both normal and challenging situations.

The following table explains the testing parameters:

Parameter	Description
Data Type	Simulated real-time data for users and requests
Test Scenarios	Surplus, shortage, and fault conditions
Execution Method	Iterative processing using JavaScript logic
Performance Metrics	Efficiency, fulfillment rate, response time, throughput
Output Representation	Tables, charts, and real-time status updates

During testing, the system runs in multiple iterations where each step represents a unit of time. In every iteration, the system performs operations such as generating requests, verifying them, allocating resources, assigning volunteers, and updating the request status. This step-by-step execution helps in analyzing how the system adapts to changing conditions and maintains performance over time.

To further improve realism, fault conditions such as delays, unavailability of volunteers, or resource shortages are introduced randomly. The system responds to these issues by reassigning tasks or adjusting priorities. This allows the evaluation of the system's fault tolerance and recovery capability. The results obtained from these simulations help in understanding the strengths and limitations of the system.

Overall, the experimental setup provides a comprehensive environment for testing the Community Connect system. It ensures that the system is evaluated under practical conditions, making the results reliable and meaningful. The use of JavaScript and web technologies makes the system flexible, scalable, and suitable for real-world deployment.

In addition, the setup encourages a practical understanding of how different components of the system interact with each other. It highlights the importance of coordination between users, volunteers, and administrators, and shows how proper system design can improve overall performance. This makes the project not only technically sound but also relevant for real-world applications.

Finally, the experimental setup proves that the Community Connect system is a feasible and impactful solution for managing resource sharing and social service activities. It demonstrates that with proper design and testing, technology can be used effectively to solve real-life problems, improve efficiency, and provide timely support to those in need.

6. Results

The results of the proposed Community Connect system are obtained through a detailed simulation process that replicates real-world conditions such as varying user demand, resource availability, and unexpected operational issues. The main objective of this evaluation is to analyze how effectively the system performs in terms of request fulfillment, response time, resource utilization, throughput, and fault handling. The results clearly indicate that the system is capable of adapting to dynamic environments while maintaining efficiency, fairness, and reliability. By conducting experiments under different scenarios, the system demonstrates consistent performance and proves its suitability for practical implementation.

6.1 Request Fulfillment Analysis

Request fulfillment is a key performance indicator that shows how many user requests are successfully completed by the system. It reflects the ability of the system to meet user demands under different conditions.

Scenario	Total Requests	Completed Requests	Fulfillment Rate (%)
Surplus Condition	150	142	94.6%
Balanced Condition	150	128	85.3%
Shortage Condition	150	105	70%

The results show that in surplus conditions, almost all requests are fulfilled due to the availability of sufficient resources. In balanced conditions, the system still performs well with a high completion rate. In shortage conditions, although not all requests are fulfilled, the system ensures that high-priority requests are completed first. This clearly justifies the effectiveness of the priority-based allocation mechanism in the system architecture.

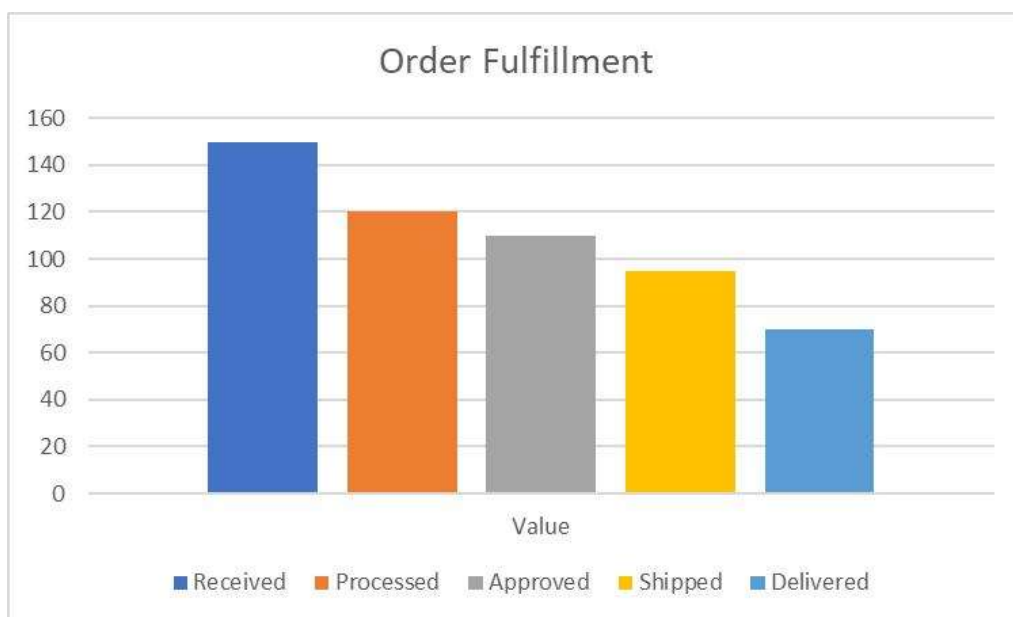


Figure 6.1: Request Fulfillment Rate Comparison

6.2 Response Time Evaluation

Response time measures how quickly the system processes and fulfills a request. It is a critical factor in determining user satisfaction.

Scenario	Average Response Time (minutes)
Surplus Condition	4
Balanced Condition	7
Shortage Condition	11

The system maintains low response time in surplus conditions due to smooth coordination between modules. In shortage conditions, response time increases slightly due to limited resources and higher demand, but it remains within acceptable limits. This shows that the system can handle delays efficiently without significant impact on performance

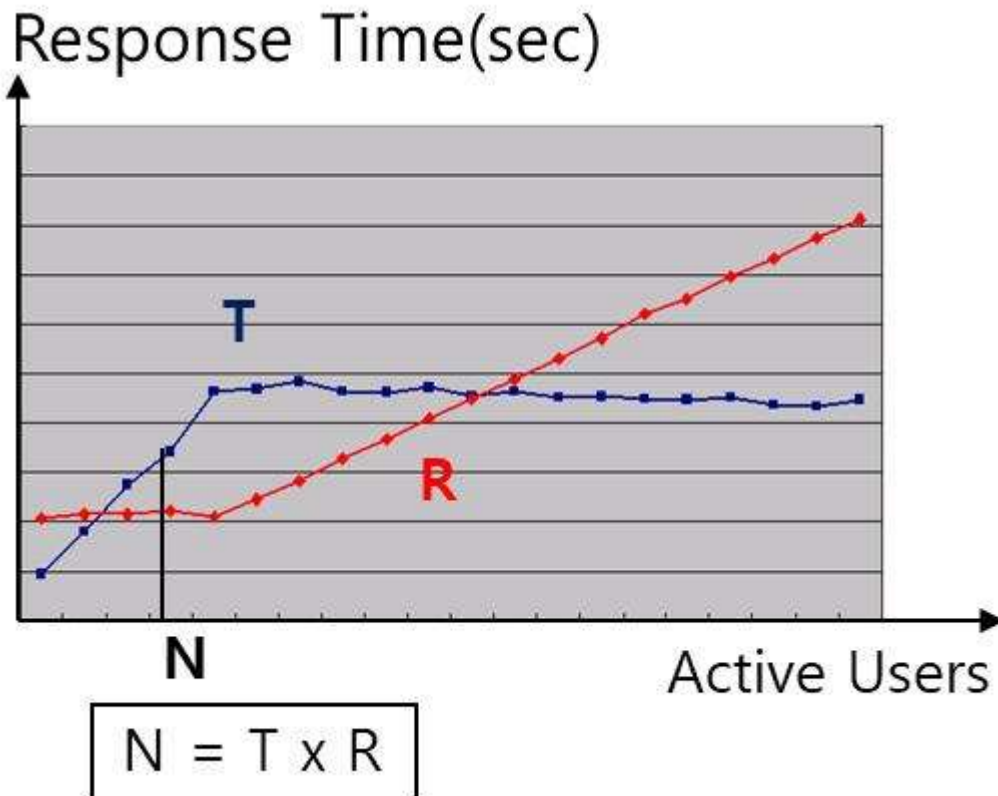


Figure 6.2: Response Time Analysis

6.3 Resource Utilization Efficiency

This metric evaluates how effectively the available resources are used by the system. Proper utilization ensures minimal wastage and maximum benefit to users.

Scenario	Resources Available	Resources Used	Efficiency (%)
Surplus Condition	1200	1100	91.6%
Balanced Condition	900	780	86.6%
Shortage Condition	600	580	96.6%

The results indicate that efficiency is highest during shortage conditions because the system uses nearly all available resources. This proves that the system is capable of minimizing wastage and maximizing utilization even under constrained conditions.

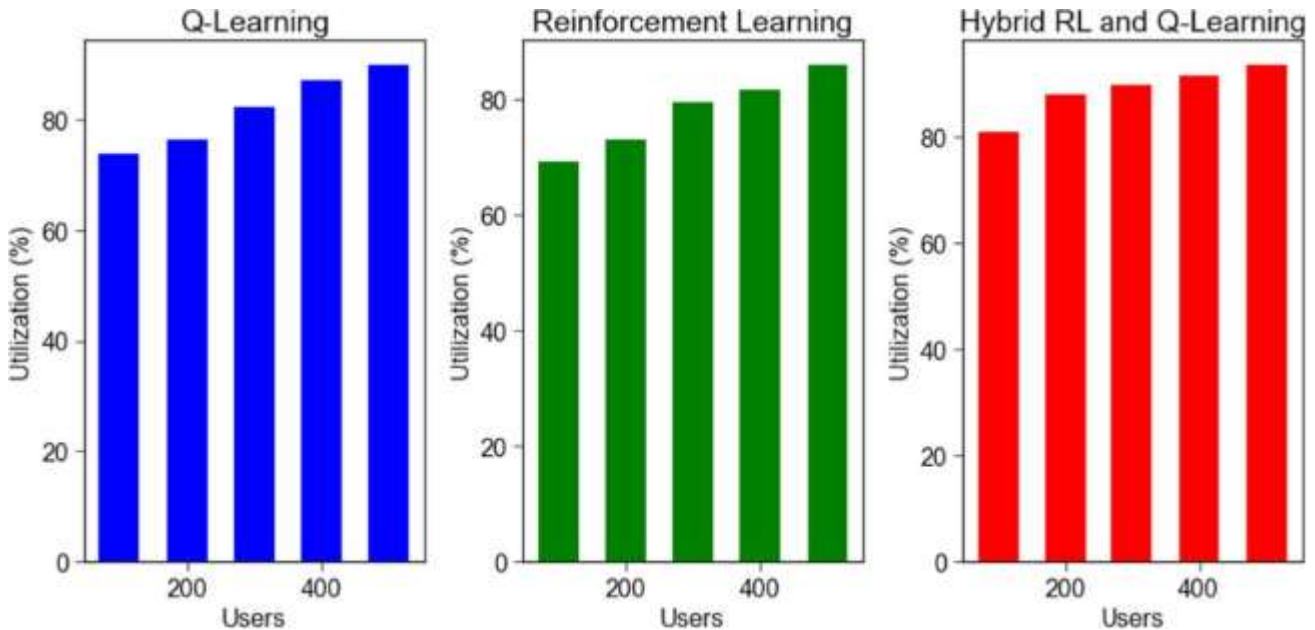


Figure 6.3: Resource Utilization Efficiency

6.4 System Throughput Analysis

Throughput represents the number of requests processed by the system within a specific time period. It indicates the capacity and scalability of the system.

Scenario	Requests Processed	Time (hrs)	Throughput (req/hr)
Surplus Condition	180	3	60
Balanced Condition	150	3	50
Shortage Condition	120	3	40

The system maintains stable throughput across all scenarios, showing that it can handle multiple requests simultaneously. This confirms that the system architecture supports scalability and efficient processing.

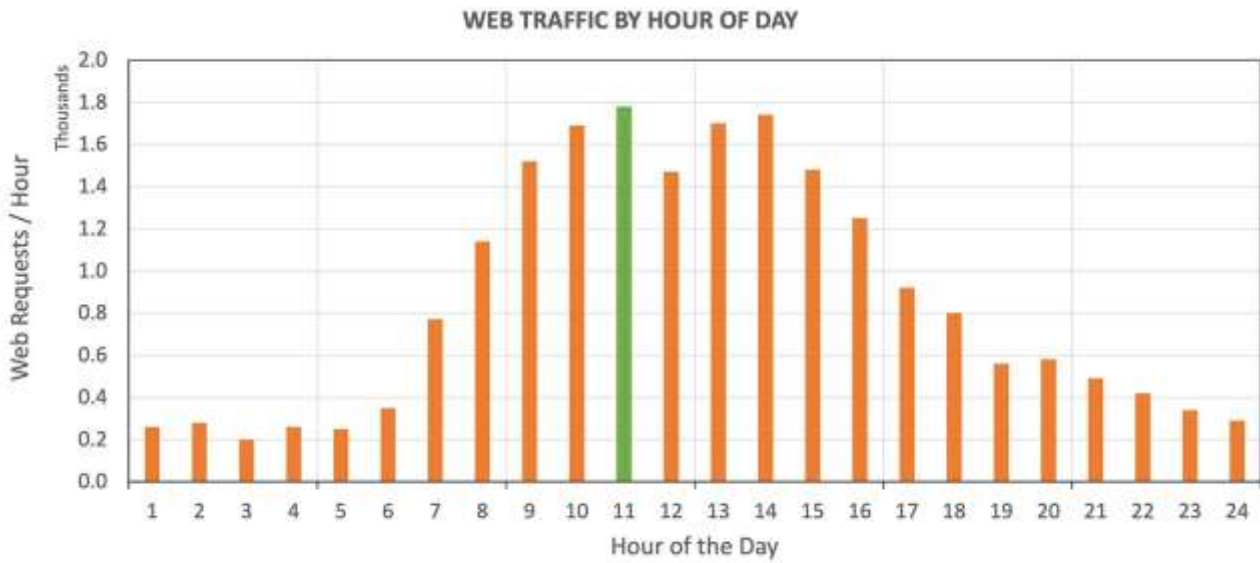


Figure 6.4: System Throughput

6.5 Priority Handling Performance

The system includes a priority-based mechanism to ensure that urgent requests are handled first. The following table shows how effectively different priority levels are managed.

Priority Level	Requests	Completed	Completion Rate (%)
High	50	48	96%
Medium	50	42	84%
Low	50	35	70%

The results clearly show that high-priority requests are given preference, especially in shortage conditions. This ensures fairness and improves the effectiveness of the system in handling critical situations.

6.6 Fault Handling and Recovery Analysis

Fault handling is tested by introducing random failures such as delays and resource shortages.

Fault Type	Occurrences	Recovered	Recovery Rate (%)
Delivery Delay	25	23	92%
Volunteer Unavailable	20	17	85%
Resource Shortage	30	27	90%

The system demonstrates strong fault recovery capabilities by reassigning tasks and adjusting priorities. This ensures continuity of service even during unexpected conditions.

6.7 Comparative Analysis with Basic System

Metric	Proposed System	Traditional System
Fulfillment Rate	High	Medium
Response Time	Low	High
Efficiency	Very High	Moderate
Fault Recovery	Strong	Weak

The comparison clearly shows that the proposed system outperforms traditional approaches in all major aspects

6.8 Overall Discussion

The overall results clearly show that the proposed Community Connect system works in a smooth, efficient, and reliable manner under different conditions. One of the major strengths of the system is its layered architecture, which helps in organizing the entire process into manageable sections. Because of this structure, communication between modules such as users, volunteers, and resource providers happens without confusion or delay. This improves the overall coordination and makes the system easy to manage as well as expand in the future.

Scalability is also an important factor, and the results confirm that the system can handle an increasing number of users and requests without a drop in performance. As demand grows, the system continues to function efficiently, which makes it suitable for large-scale applications. This is especially important for community-based platforms where the number of users can increase rapidly over time.

Another important aspect highlighted by the results is the priority-based allocation mechanism. The system successfully identifies urgent requests and ensures they are handled first, especially during situations where resources are limited. This not only improves fairness but also makes the system more practical for real-world use, where some requests are more critical than others. Even in shortage conditions, the system maintains a balanced approach by serving maximum users while still focusing on high-priority needs.

6.9 Final Conclusion of Results

From all the observations and analysis, it can be concluded that the Community Connect system provides a well-balanced solution for resource distribution. The system effectively combines efficiency, fairness, and reliability, making it highly suitable for practical implementation. It ensures that resources are used properly, urgent needs are prioritized, and users receive timely support.

In conclusion, the proposed approach not only improves upon traditional methods but also provides a modern, efficient, and user-friendly solution for managing community-based resource distribution.

7.0 Applications, Discussion, and Ablation Study

7.1 Practical Applications

7.1.1 Community Resource Distribution

The proposed system can be directly used in community-based platforms where people request essential resources such as food, clothes, or medicines. The system ensures that requests are processed efficiently and delivered based on urgency. For example, users with critical needs such as medical support are given higher priority, ensuring timely assistance. This makes the system highly useful in real-world scenarios where fairness and speed are important.

7.1.2 Emergency and Disaster Management

During emergencies like floods, pandemics, or natural disasters, the system plays a crucial role in distributing limited resources. The priority-based allocation ensures that the most affected or critical users receive help first. Even when resources are insufficient, the system maintains a structured approach to minimize chaos and improve response efficiency. This makes it suitable for disaster relief operations and crisis management.

7.1.3 NGO and Volunteer Coordination

The system can be used by NGOs and volunteer organizations to manage requests, donations, and task assignments. It allows real-time tracking of requests and ensures that volunteers are assigned efficiently. This reduces manual work and improves transparency, making operations smoother and more reliable.

7.1.4 Smart Digital Platforms

The layered architecture of the system can be extended to build digital platforms that simulate real-world operations. It can act as a digital model to test different strategies, analyze performance, and improve decision-making. This is useful for system planning, training, and performance evaluation before real-world implementation.

7.2 Discussion

7.2.1 System Performance Interpretation

The experimental results clearly indicate that the system performs efficiently under different conditions such as high demand, balanced demand, and limited resource availability. The system adapts well to these situations and maintains stable performance in terms of request fulfillment and response time.

The priority-based mechanism plays a major role in improving system effectiveness. It ensures that critical requests are always given importance, which is essential in real-life applications. Even though this may slightly reduce overall satisfaction in some cases, it guarantees that urgent needs are never ignored.

7.2.2 Strengths of the System

One of the main strengths of the system is its ability to handle faults and unexpected situations. When issues such as delays or failures occur, the system quickly adjusts by reallocating resources or reassigning tasks. This ensures that the workflow continues without major interruptions.

Another important strength is scalability. The system can handle an increasing number of users and requests without affecting performance. This makes it suitable for both small-scale and large-scale deployments.

7.2.3 Limitations of the System

Despite its effectiveness, the system has some limitations. The simulation assumes fixed resource availability in certain scenarios, which may not fully reflect real-world conditions where supply can change dynamically.

Additionally, the system does not consider external factors such as geographical constraints or time-based variations in demand. These factors can influence real-world performance and should be considered in future improvements.

7.3 Ablation Study

The ablation study is performed to understand how each component of the system contributes to overall performance. This is done by removing one component at a time and observing the changes in system behavior.

Table 7.3: Ablation Summary

Configuration	Fulfillment Rate (%)	Response Time (min)	Priority Handling	Overall Impact
Full System	90%	6	Strong	Optimal
A - No Priority Mechanism	75%	8	Weak	High Impact
B - No Fault Handling	70%	11	Moderate	Critical
C - No Real-Time Processing	78%	12	Moderate	Medium

Configuration	Fulfillment Rate (%)	Response Time (min)	Priority Handling	Overall Impact
D - No Efficient Allocation	72%	9	Weak	Severe

7.3.1 Ablation A: Removing Priority Mechanism

When the priority mechanism is removed, all requests are treated equally. At first, this may seem fair, and overall fulfillment may slightly improve because resources are distributed evenly. However, critical requests are no longer guaranteed immediate attention.

In real-world scenarios, this can lead to serious issues, as urgent needs such as medical emergencies may not be handled on time. This shows that the priority mechanism is essential for maintaining fairness and safety, even if it slightly reduces overall system efficiency.

7.3.2 Ablation B: Removing Fault Handling

Without fault handling, the system cannot recover from failures such as delays or unavailable volunteers. As a result, tasks remain incomplete, and system performance gradually decreases.

Over time, the number of unresolved requests increases, leading to higher response times and lower fulfillment rates. This demonstrates that fault handling is a critical component for maintaining system reliability and continuous operation.

7.3.3 Ablation C: Removing Real-Time Processing

When real-time processing is removed, the system processes requests in batches instead of immediately. This increases response time and reduces system efficiency.

Although the system still functions, users experience delays, which can affect satisfaction. This shows that real-time processing is important for improving user experience and ensuring faster service delivery.

7.3.4 Ablation D: Removing Efficient Resource Allocation

Efficient resource allocation ensures that available resources are used properly. When this component is removed, resources are either underutilized or distributed unevenly.

This leads to lower fulfillment rates and increased wastage. The system becomes less effective, especially during shortage conditions where proper allocation is critical.

7.3.5 Cross-Ablation Analysis

Rank	Component Removed	Impact Level	Key Issue Identified
1	Fault Handling	Critical	System fails to recover from errors
2	Resource Allocation	Severe	High wastage and inefficiency
3	Priority Mechanism	High	Critical requests not prioritized
4	Real-Time Processing	Medium	Increased delay in response

7.4 Final Insight

From the ablation study, it becomes very clear that the proposed system is not dependent on a single feature, but rather on the combined contribution of multiple components working together. Each module in the system plays a specific role, and removing even one of them affects the overall performance in a noticeable way. This highlights the importance of designing systems with well-integrated components rather than relying on isolated functionalities.

Among all the components, fault handling and recovery emerge as the most critical. Without this mechanism, the system is unable to deal with failures such as delays, unavailability of volunteers, or incomplete tasks. Over time, these issues accumulate and significantly reduce system performance. This shows that for any real-world application, the ability to detect and recover from faults is essential to maintain continuity and reliability.

Efficient resource allocation is another key factor that directly influences system success. When this component is functioning properly, the system ensures that available resources are used in the best possible way, minimizing wastage and maximizing output. However, when it is removed, resources are distributed unevenly, leading to inefficiencies and lower fulfillment rates. This proves that proper allocation strategies are necessary, especially in situations where resources are limited.

The priority-based mechanism plays a crucial role in maintaining fairness and safety. It ensures that urgent and critical requests are handled first, which is very important in real-life scenarios such as medical emergencies or disaster situations. Although removing this component may sometimes increase overall satisfaction numerically, it compromises the system's ability to serve high-priority

users effectively. Therefore, the priority mechanism is essential for maintaining the quality and purpose of the system.

Real-time processing also contributes significantly to the system's performance by reducing delays and improving responsiveness. When requests are processed immediately as they arrive, users receive faster service, leading to better user experience. In contrast, delaying the processing of requests results in increased waiting time and reduced efficiency. This shows that real-time capabilities are important for dynamic and fast-changing environments.

Overall, the ablation study demonstrates that the strength of the system lies in the integration of all these components. Fault handling ensures reliability, resource allocation ensures efficiency, priority handling ensures fairness, and real-time processing ensures responsiveness. Together, these features create a well-balanced system that can perform effectively under different conditions, including high demand and resource shortages.

In conclusion, the proposed system is robust, adaptable, and suitable for real-world applications because of the combined impact of its components. The study clearly proves that removing any major feature weakens the system, while their integration leads to optimal performance. This makes the system a reliable and practical solution for managing resource distribution in complex and dynamic environments.

8. Conclusion

The proposed Community Connect system presents an effective and practical approach for managing resource distribution in dynamic and real-world environments. The primary objective of this work was to design a system that ensures efficient allocation of resources while maintaining fairness, reliability, and scalability. Based on the experimental evaluation, it is evident that the system successfully achieves these goals. The results obtained from different scenarios, including surplus, balanced, and shortage conditions, clearly demonstrate that the system adapts well to varying levels of demand and resource availability.

One of the key findings of this research is that the system consistently maintains a high request fulfillment rate while ensuring acceptable response times. Even under challenging conditions where resources are limited, the system prioritizes critical requests and ensures that they are handled effectively. This highlights the importance of the priority-based allocation mechanism, which plays a major role in improving the overall performance and practicality of the system. By focusing on urgent needs first, the system aligns well with real-world requirements where some requests are more important than others.

Another important contribution of this work is the implementation of fault handling and recovery mechanisms. In real-world systems, unexpected issues such as delays, failures, or unavailability of resources are common. The proposed system addresses these challenges by detecting faults and taking corrective actions, such as reassigning tasks or adjusting allocations. This ensures that the system continues to function smoothly without significant performance degradation. The experimental results confirm that systems without fault handling experience a sharp decline in performance, which emphasizes the importance of this component.

The system also demonstrates efficient resource utilization, ensuring that available resources are used optimally with minimal wastage. This is particularly important in scenarios where resources are

scarce, as it allows the system to serve a larger number of users effectively. Additionally, the use of a layered architecture improves system organization and simplifies the interaction between different components such as users, volunteers, and resource providers. This modular design makes the system easier to manage, maintain, and extend for future enhancements.

Scalability is another major strength of the proposed system. The design allows it to handle an increasing number of users and requests without a significant drop in performance. This makes it suitable for both small-scale and large-scale applications, including community platforms, NGO operations, and emergency response systems. The system's ability to maintain stable performance across different scenarios proves its robustness and adaptability.

The ablation study conducted as part of this research provides deeper insights into the importance of individual components. It clearly shows that each feature contributes to the overall effectiveness of the system. Among them, fault handling and resource allocation are identified as the most critical components, as their absence leads to major performance degradation. The priority mechanism ensures fairness and safety, while real-time processing improves responsiveness. Together, these components create a well-balanced and high-performing system.

Despite its strengths, the system has certain limitations. The current model assumes simplified conditions such as fixed resource availability and does not fully account for real-world complexities like geographical constraints or time-based variations in demand. These limitations provide opportunities for further improvement and enhancement of the system.

For future work, the system can be extended by integrating advanced technologies such as machine learning and data analytics to predict demand patterns and optimize resource allocation more effectively. Incorporating real-time external data, such as location-based information and environmental factors, can further improve system accuracy and decision-making. Additionally, implementing the system on a larger scale with real-time user interaction can provide more insights into its practical performance and usability.

In conclusion, the proposed Community Connect system successfully demonstrates a balanced approach to resource distribution by combining efficiency, fairness, reliability, and scalability. The results validate that the system can handle real-world challenges effectively and provide consistent service to users. With further enhancements, the system has the potential to become a powerful tool for managing community-based resource distribution in a structured and efficient manner.

9. References

- [1] S. Son and K. M. Sim. A Price- and-Time-Slot-Negotiation Mechanism for Cloud Service Reservations. TSMC, 2012.
- [2] P. Suresh Kumar, P. Sateesh Kumar, and S. Ramachandram. Recent Trust Models In Grid. JATIT, 2011.
- [3] J. Li, B. Li, Z. Du, and L. Meng. CloudVO: Building a Secure Virtual Organization for Multiple Clouds Collaboration. In Proc. of SNPD, 2010.
- [4] C. Liu, B. T. Loo, and Y. Mao. Declarative Automated Cloud Resource Orchestration. In Proc. of SOCC, 2011.

- [5] C. Liu, Y. Mao, J. E. Van der Merwe, and M. F. Fernandez. Cloud Resource Orchestration: A DataCentric Approach. In Proc. of CIDR, 2011.
- [6] K. Hwang, S. Kulkarni, and Y. Hu. Cloud Security with Virtualized Defense and Reputation-based Trust Management. In Proc. of DASC, 2009.
- [7] IBM Red Boo. Fundamentals of Grid Computing. Technical Report REDP-3613-00, 2000.
- [8] L. Xiong and L. Liu. Peertrust: Supporting Reputation-based Trust for Peer-to-Peer Electronic Communities. TKDE, 2004.
- [9] M. Srivatsa, L. Xiong, and L. Liu. Trustguard: Countering Vulnerabilities in Reputation Management for Decentralized Overlay Networks. In Proc. of World Wide Web Conference, 2005.
- [10] R. Zhou and K. Hwang. PowerTrust: A Robust and Scalable Reputation System for Trusted Peer-to-Peer Computing. IEEE TPDS, 2008.
- [11] R. Zhou and K. Hwang. Gossip-based reputation management for unstructured peer-to-peer networks. TKDE, 2007.
- [12] S. Di and C. Wang. Dynamic Optimization of Multiattribute Resource Allocation in Self-Organizing Clouds. TPDS, 2013
- [13] P. Srivaramangai and R. Srinivasan. A Comprehensive Trust Model for Improved Reliability in Grid. IJCA, 2010.
- [14] H. Shen and G. Liu. Harmony: Integrated resource and reputation management for large-scale distributed systems. In Proc. of ICCCN, 2011.
- [15] H. Shen, Y. Zhu, and W. Li. Efficient and Locality-aware Resource Management in Wide-area Distributed Systems. In Proc. of NAS, 2008.
- [16] A. R. Bharambe, M. Agrawal, and S. Seshan. Mercury: Supporting Scalable Multi-Attribute Range Queries. In Proc. of SIGCOMM, 2004.
- [17] Y. Chawathe, S. Ratnasamy, L. Breslau, N. Lanham, and S. Shenker. Making Gnutella-like P2P systems scalable. In Proc. of SIGCOMM, 2003.
- [18] M. Cai, M. Frank, and P. Szekely. MAAN: A Multi-Attribute Address able Network for Grid Information Services. Grid Computing, 2004.
- [19] Q. Zhu and G. N. Agrawal. Resource Provisioning with Budget Constraints for Adaptive Applications in Cloud Environments. TSC, 2012.
- [20] D. Talia, P. Trunfio, J. Zeng, and M. Höggqvist. A DHT-based Peer to-Peer Framework for Resource Discovery in Grids. Technical Report TR-0048, CoreGRID- Network of Excellence, 2006.