

AFFORDABLE WAITING AREA INTERIOR FOR RAILWAY STATION

Ekta Deshmukh¹, Ar. Aman kumar Gupta²

¹ Student, Department of Interior Design, Kalinga University, Naya Raipur

² Head of Department, Department of Interior Design, Kalinga University, Naya Raipur

Abstract

This research paper examines the design, functionality, and challenges of second-class waiting halls in railway stations. It focuses on the seating arrangement, ventilation, lighting, and cleanliness of the waiting hall. The toilets and drinking water should be clean and hygienic, and the luggage storage facilities should be secure.



Key Words: seating, ventilation, cleanliness.

1. INTRODUCTION

Railway Stations provide free waiting areas and retiring rooms for passengers, as well as Executive Lounges for private waiting areas.

. AIM AND OBJECTIVES:

To provide an affordable seating space by renovating existing in seating arrangements in railway station waiting areas.

CASE STUDIES:

The Indian Railways has inaugurated a new 7,500 sq. feet waiting room at Patna Junction, the biggest waiting room at a railway station in India.

Some of the main features of the largest Indian Railways AC waiting hall are:

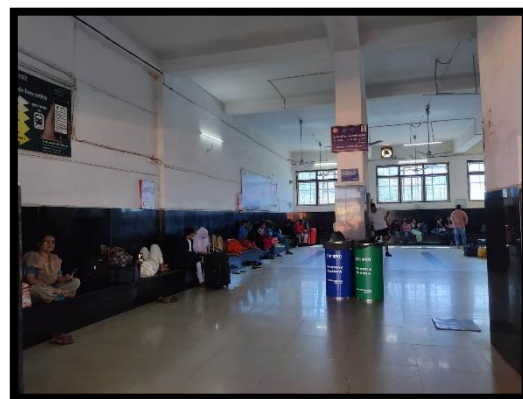
The Patna junction station has built an AC waiting hall with seven 65 inch HD television screens, free Rail-Tel, Wi-Fi, charging points, steel benches, furniture, and ceiling fans. The hall is adorned with paintings and traditional artwork representing the local folk culture and tradition of Bihar, and cleanliness is taken care of by station staff.

2. LIVE CASE STUDY

DURG JUNCTION RAILWAY STATION

Waiting areas in railway stations vary depending on size, location, and facilities. There are 3 types of waiting rooms.

- * Lower class waiting rooms - NON.AC
- * Ladies waiting rooms - AC
- * Upper - class waiting rooms – AC



Green Energy

Green energy is renewable and causes minimal environmental impact.

• Solar Energy

Solar energy is a clean source of energy from the sun, which can be collected and converted into usable electricity through solar panels. Photovoltaic cells create an electrical current, which can be used to power homes or add to the national grid.

Bamboo Curtains

Bamboo curtains are an eco-friendly choice, but they can have both advantages and disadvantages.

Advantages:

Bamboo is a natural, inexhaustibly accessible and quickly renewable resource. It has a casual style and can be used on patio doors and coexist well with rattan or wicker furniture. It can be tidied and wiped with a delicate wipe, and can be joined with fabric liners for light control. It can be used for windows and entryway curtains, and can be incorporated with remote control motorization.

Disadvantages:

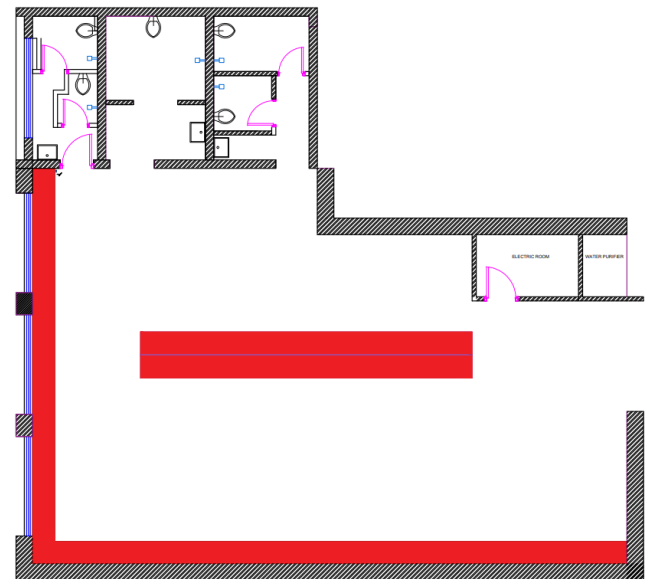
Bamboo curtains require care in maintenance and maintenance, as they are fragile and susceptible to breaking, cracking, and improper operation. Care should be taken to prevent damage.

MATERIALS USED FOR SOFA

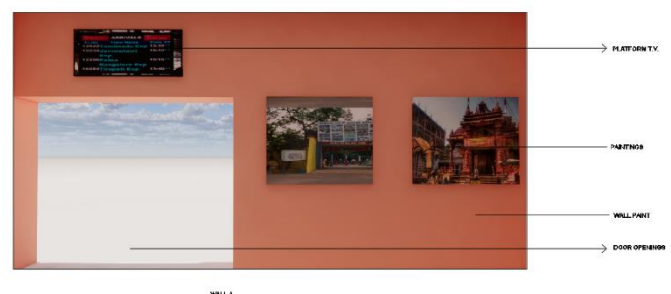


Coconut waste, red fabric and wood

DESIGN PROPOSAL



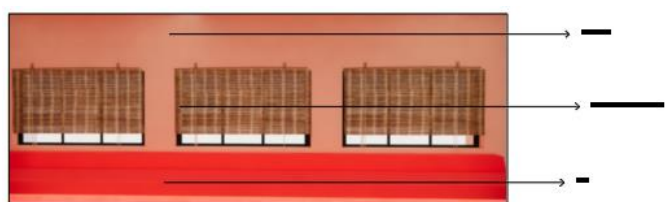
PLAN



Elevation of wall A



Elevation of wall B

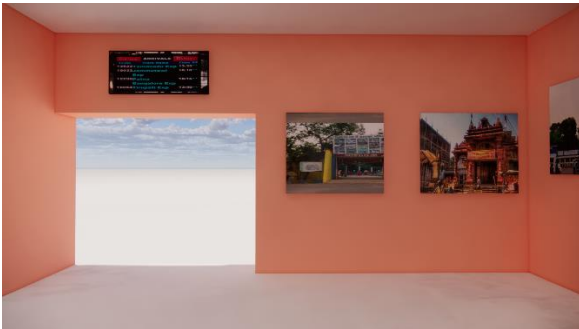


Elevation of wall C



Elevation of wall D

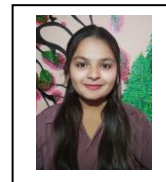
*3D VIEWS



RECREATION OF SEATING AREA IN LOW COST:

- To replace the slab into comfortable seating of L-Shaped cushions.
- Coconut waste is used for making foam in sofa.
- The walls have also been adorned with paintings of tourist places of durg – bhilai.
- For ventilation, bamboo curtains is used for come cool air through curtains.
- Green energy is used for electricity.
- LED lights have been installed for the illumination and lighting of the entire hall.
- Apart from this, cleanliness of the hall is being taken care of by the station.

BIOGRAPHIES



Ekta Deshmukh
Semester- VI
Department of Interior Design
Kalinga University, Naya
Raipur, Chhattisgarh



Ar. Aman kumar gupta
Assistant professor
Department of Interior Design
Kalinga University, Naya
Raipur, Chhattisgarh

4. CONCLUSIONS

The second-class waiting hall is essential for providing a comfortable and safe waiting experience, but it can be improved by addressing crowd management strategies, cleaning and maintenance, toilets, and security measures.