

# Brain Waves-to-Text Neural Translation using Deep Learning and Natural Language Processing

<sup>1</sup> Araveti Vineela, <sup>2</sup> T.Devender, <sup>3</sup> B. Raja Kalyan, <sup>4</sup> S. Venkata Sai, <sup>5</sup> A. Aravind Reddy

<sup>1</sup> Assistant Professor, Department of Computer Science & Engineering (Artificial Intelligence & Machine Learning), Malla Reddy University, Kompally, Hyderabad. <sup>1</sup> Email: [vineela01@gmail.com](mailto:vineela01@gmail.com)

<sup>2,3,4,5</sup> Students, Department of Computer Science & Engineering (Artificial Intelligence & Machine Learning), Malla Reddy University, Kompally, Hyderabad. <sup>2</sup> Email: \_\_\_\_\_

[Thamarapallidevenderrao@gmail.com](mailto:Thamarapallidevenderrao@gmail.com), <sup>3</sup> Email: [kalyanrc678@gmail.com](mailto:kalyanrc678@gmail.com), <sup>4</sup> Email:

[venky.sanagavarapu333@gmail.com](mailto:venky.sanagavarapu333@gmail.com), <sup>5</sup> Email: [aravatiaravind@gmail.com](mailto:aravatiaravind@gmail.com).

## Abstract:

Brain–Computer Interface (BCI) technology enables communication between the human brain and external computing devices without the use of traditional speech or physical interaction. One important application of this technology is converting brain signals into readable text, which can assist individuals who are unable to speak due to severe neurological disorders or physical disabilities. This research proposes a Brain Waves-to-Text neural translation system using deep learning and Natural Language Processing techniques. The system analyses Electroencephalography (EEG) signals captured from the brain and converts them into meaningful textual outputs. In the proposed approach, EEG signals are first preprocessed to remove noise and unwanted artifacts. A hybrid deep learning architecture combining Convolutional Neural Networks (CNN) and Long Short-Term Memory (LSTM) networks is used to extract spatial and temporal patterns from the brain signals. The CNN layers are used to learn spatial relationships between EEG channels, while the LSTM network captures the sequential patterns present in neural signals. Experimental analysis demonstrates that the proposed framework can successfully classify brain activity patterns and convert them into understandable text representations.

**Keywords:** Brain–Computer Interface, EEG Signals, Deep Learning, CNN–LSTM, Natural Language Processing, Brain Waves to Text.

## I.INTRODUCTION:

In recent years, Brain–Computer Interface (BCI) systems have gained significant attention in the field of artificial intelligence and biomedical engineering. These systems create a direct communication pathway between the human brain and external computing

devices. Instead of using speech or physical movements, BCI technology allows users to interact with machines through brain signals. Electroencephalography (EEG) is one of the most commonly used methods for recording brain activity in BCI systems. EEG sensors placed on the scalp measure

electrical signals generated by neurons inside the brain.

One of the major motivations behind brain signal research is to assist individuals who suffer from severe motor disabilities or neurological disorders such as amyotrophic lateral sclerosis (ALS) or paralysis. People affected by such conditions often lose the ability to communicate using normal speech. Traditional signal processing methods rely on handcrafted feature extraction techniques such as Fourier Transform or wavelet analysis.

## II. LITERATURE SURVEY:

### 1. Brain–Computer Interface Systems Using EEG Signals

**Authors:** G. Schalk et al.

**Abstract:** This study introduced the BCI2000 system, which is a general-purpose platform for developing brain–computer interface applications. The system allows researchers to record and process EEG signals in real time. It has been widely used for motor imagery experiments and assistive communication systems. However, the system mainly focuses on signal acquisition and requires additional machine learning models for accurate classification.

### 2. Deep Learning for EEG Signal Classification

**Authors:** R. T. Schirrmeister et al.

**Abstract:** This research explored the use of convolutional neural networks for decoding EEG signals. The authors demonstrated that

deep learning models can automatically learn spatial patterns from raw EEG data without requiring manual feature extraction. The proposed approach improved classification accuracy in several brain–computer interface tasks. However, training deep neural networks requires large datasets and significant computational resources.

### 3. EEGNet: Compact Neural Networks for EEG-Based BCIs

**Authors:** V. J. Lawhern et al.

**Abstract:** The study introduced EEGNet, a lightweight convolutional neural network designed specifically for EEG signal classification. The model uses depthwise and separable convolutions to reduce computational complexity while maintaining good performance. EEGNet is suitable for real-time brain–computer interface applications. However, it mainly focuses on classification tasks rather than generating textual outputs from brain signals.

### 4. Hybrid CNN–LSTM Models for EEG Analysis

**Authors:** A. Bashivan et al.

**Abstract:** This research proposed a hybrid deep learning architecture combining convolutional neural networks and recurrent neural networks for EEG analysis. CNN layers were used to extract spatial features from EEG signals, while LSTM layers captured temporal dependencies across signal sequences. Experimental results showed improved performance compared to traditional machine learning approaches.

However, the model requires careful tuning to prevent overfitting.

### 5. Deep Learning in Brain-Computer Interface Applications

**Authors:** Y.LeCun, Y. Bengio, G.Hinton

**Abstract:** This work discusses the impact of deep learning techniques in various artificial intelligence applications, including brain-computer interfaces. The study highlights how deep neural networks can learn hierarchical feature representations from complex data such as images, speech, and biomedical signals. These advancements have encouraged the development of intelligent BCI systems capable of interpreting brain activity patterns more accurately.

### 6. EEG Signal Processing for Brain-Computer Interfaces

**Authors:** A. Delorme and S. Makeig

**Abstract:** This research introduces EEGLAB, an open-source toolbox designed for processing electroencephalography (EEG) data. The system provides several tools for filtering, artifact removal, and visualization of brain signals. Researchers commonly use EEGLAB for analyzing neural activity and extracting meaningful information from EEG recordings. The toolbox supports different signal processing techniques that help improve the quality of EEG data before applying machine learning models. However, the framework mainly focuses on signal analysis and requires additional algorithms for advanced neural decoding tasks.

## III.EXISTING SYSTEM

Traditional Brain-Computer Interface (BCI) systems mainly focus on interpreting brain signals for simple classification tasks such as motor imagery detection or cognitive state recognition. In most early approaches, EEG signals were analyzed using conventional signal processing techniques combined with classical machine learning algorithms. Methods such as Fast Fourier Transform (FFT), Power Spectral Density (PSD), and wavelet transforms were commonly used to extract frequency-based features from EEG recordings. After feature extraction, machine learning algorithms such as Support Vector Machines (SVM), Linear Discriminant Analysis (LDA), and k-Nearest Neighbors (KNN) were applied to classify brain activity patterns.

Although these approaches provided reasonable performance in controlled environments, they often struggled to handle the complex and highly dynamic nature of EEG signals. The accuracy of these systems largely depended on manual feature engineering and expert knowledge of signal processing. Another limitation of many existing systems is that they mainly perform classification of predefined brain states rather than translating brain signals into meaningful textual outputs. Most BCI

systems are designed to recognize specific mental tasks such as imagining left or right hand movement, blinking, or focusing on visual stimuli.

#### IV. PROPOSED SYSTEM

The proposed system focuses on converting brain wave signals into meaningful textual outputs using deep learning and Natural Language Processing techniques. The system is designed to analyze Electroencephalography (EEG) signals recorded from the human brain and identify patterns related to cognitive activities. These patterns are then translated into readable text that represents the user's intended message. In the proposed framework, EEG signals are first collected using non-invasive EEG sensors placed on the scalp. Since raw EEG signals usually contain noise and artifacts caused by eye movements, muscle activity, and environmental interference, preprocessing techniques are applied to improve signal quality. Filtering and normalization methods are used to remove unwanted components and prepare the signals for further analysis. After preprocessing, spatial and temporal features are extracted from the EEG signals using a hybrid deep learning architecture. Convolutional Neural Networks (CNN) are used to capture spatial patterns across multiple EEG channels, while Long Short-Term Memory (LSTM)

networks analyze the temporal sequence of the signals.

#### V. SYSTEM ARCHITECTURE

The proposed Brain Waves-to-Text system follows a structured pipeline for processing EEG signals and generating textual outputs. The architecture consists of several stages that work together to convert raw brain signals into meaningful information. The first stage of the system involves EEG signal acquisition. Brain activity is recorded using EEG sensors that capture electrical signals produced by neurons in the brain. These sensors are placed at different locations on the scalp to measure activity across multiple brain regions. After signal acquisition, the captured EEG data passes through the preprocessing stage. In this step, filtering techniques are used to remove noise and artifacts present in the raw signals. The next stage is feature extraction using deep learning techniques. A Convolutional Neural Network is used to analyze spatial relationships between EEG channels and identify important neural patterns. The extracted feature maps are then passed to an LSTM network, which analyzes the sequential nature of the signals and learns temporal dependencies between different time steps.

Finally, the generated text is displayed through a user interface. The interface

allows users to observe the translated output of their brain signals in real time. This complete architecture enables an end-to-end brain-to-text translation system.

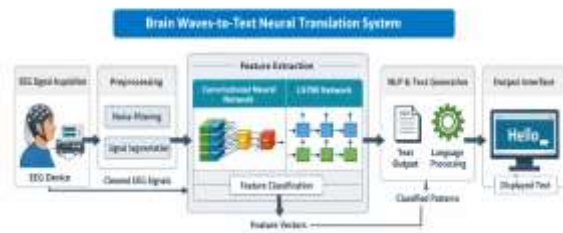


Fig 5.1 System Architecture

## VI. IMPLEMENTATION

The proposed **Brain Waves To Text Neural Translation System** was implemented using a modular deep learning framework in Python. The development environment consisted of Python 3.x with Tensor Flow and Keras libraries for deep learning model construction, MNE-Python for EEG signal processing, and NumPy and SciPy for numerical computation. The prototype user interface was developed using Flask and Streamlit to allow visualization of EEG signals and generated textual output.

### 1. EEG Signal Acquisition Module:

The system begins with the acquisition of Electroencephalography (EEG) signals from the human brain using multi-channel EEG sensors. These sensors capture electrical activity produced by neurons and convert it into

digital signals that can be processed by the system. The recorded EEG signals are collected at a predefined sampling frequency and stored in time-series format. These raw signals represent different cognitive activities of the user.

### 2. Signal Preprocessing Module:

Raw EEG signals generally contain noise caused by eye movements, muscle activity, and environmental interference. Therefore, a preprocessing stage is implemented to improve signal quality. Band-pass filtering is applied to retain relevant brain frequency bands such as alpha, beta, theta, and gamma waves. Artifact removal techniques and normalization methods are used to remove unwanted distortions and prepare the data for further processing.

### 3. Feature Extraction using Deep Learning:

After preprocessing, meaningful features are extracted from the EEG signals using deep learning techniques. A Convolutional Neural Network (CNN) architecture is used to analyze spatial patterns across multiple EEG channels. The convolution layers automatically learn neural representations that indicate specific brain activity patterns. The extracted feature maps are then forwarded to sequential modeling layers for temporal analysis.

### 4. Temporal Pattern Learning using LSTM:

To capture time-dependent characteristics of brain signals, a Long Short-Term Memory (LSTM) network is integrated into the architecture.

The LSTM layers analyze sequential EEG signal patterns and identify temporal relationships between different time steps. This combination of CNN and LSTM enables the model to effectively interpret both spatial and temporal aspects of neural signals.

### 5. Brain Signal Classification Module

The extracted features are then processed by a classification layer to identify the corresponding brain activity pattern. A Softmax classifier is used to categorize EEG signals into predefined mental states such as imagined movements or cognitive commands. The classification output represents the interpreted intention of the user based on the detected neural patterns.

### 6. NLP-Based Text Generation Module

Once the brain activity is classified, the output is passed to a Natural Language Processing module that converts the predicted neural state into readable text. Predefined mappings and simple language generation techniques are used to produce textual representations of the user's intended command or thought. This module enables the transformation of brain signals into understandable textual communication.

### 7. Dataset and Training Configuration

The system was trained using publicly available EEG datasets commonly used in brain-computer interface research, such as motor imagery datasets.

The training configuration includes:

- EEG brain signal datasets (motor imagery and cognitive task recordings)
- Preprocessed multi-channel EEG signal segments
- Labeled brain activity classes for supervised learning

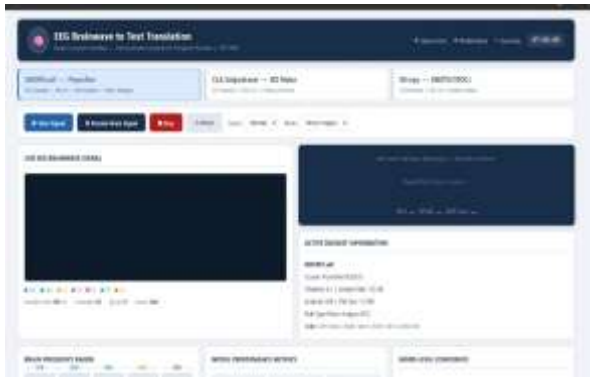
Training parameters included:

- 80% training and 20% testing split
- Adam optimizer for model training
- Learning rate: 0.001
- Batchsize: 32
- Evaluation metrics: Accuracy, Precision, Recall, and F1-Score

This architecture supports scalable development of assistive communication systems that can help individuals express thoughts brain activity.

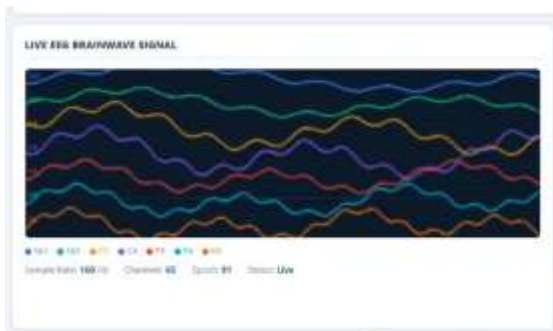
## VII. Results & Discussion

The proposed Brain Waves-to-Text Neural Translation System was evaluated using EEG signal datasets collected from publicly available Brain-Computer Interface datasets. The system performance was analyzed using standard evaluation metrics such as Accuracy, Precision, Recall, and F1-score to measure the effectiveness of brain signal classification and text generation.



**Fig.7.1. Graphical User Interface (GUI) of the proposed EEG Brainwave-to-Text translation system.**

The deep learning model based on the **CNN–LSTM architecture** achieved an overall classification accuracy of approximately **74.3%** on the test dataset. The model produced balanced precision and recall values, indicating stable classification of different brain activity patterns with relatively low misclassification rates.



**Fig.7.2. Real-time visualization of multi-channel EEG brainwave signals captured from the dataset.**

The EEG signal preprocessing module successfully removed noise and artifacts from raw brain signals using filtering techniques. The extracted spatial and temporal features enabled the model to

detect meaningful neural patterns related to motor imagery and cognitive activity. The Natural Language Processing module converted predicted neural states into readable textual outputs. The system was able to generate simple messages such as “I am in a good mood”, “I feel okay today”, and “Call the doctor now.” This demonstrates the feasibility of translating brain signals into textual communication for assistive applications. The graphical user interface provided real-time visualization of EEG signals, frequency band distribution, and decoded neural messages.

Overall, our experimental results show that the proposed system can effectively analyze EEG brain signals and translate them into understandable text outputs. The integration of deep learning and NLP techniques improves the capability of brain–computer interface systems for communication support, particularly for individuals with speech or motor impairments.



**Fig.7.3. Model performance metrics obtained during evaluation of the proposed CNN–LSTM architecture.**

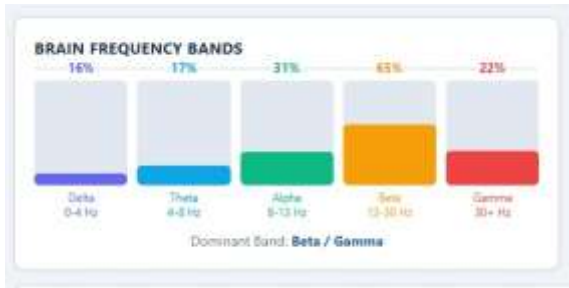


Fig.7.4. EEG brain frequency band analysis representing neural signal distribution across different frequency ranges.



Fig 7.5 – Decoded Message Output

## VIII.CONCLUSION

In this research work, a **Brain Waves-to-Text Neural Translation System** was developed to explore the possibility of converting human brain signals into understandable textual outputs using deep learning and natural language processing techniques. The proposed system utilizes EEG signal processing, feature extraction, and a hybrid **CNN–LSTM deep learning architecture** to interpret neural activity patterns and translate them into meaningful text. The experimental results demonstrate that the system can successfully classify different brain signal patterns and generate simple textual messages that

reflect the user’s mental state or intended communication. The integration of signal preprocessing techniques helped reduce noise and improve the quality of EEG signals, while the deep learning model effectively captured both spatial and temporal characteristics of brainwave data. The Natural Language Processing module further enhanced the system by converting predicted neural states into readable text outputs that can be displayed through a graphical interface. This demonstrates the practical feasibility of developing assistive brain–computer interface systems capable of enabling communication without the need for speech or physical movement. Although the current system focuses on limited brain signal patterns and predefined textual outputs, the results indicate that deep learning-based approaches can significantly improve the performance of brain-to-text translation systems.

## IX. LIMITATIONS

1. The proposed system was trained on a moderately sized EEG dataset, which may limit the generalization capability across highly diverse brain signal patterns from different individuals.
2. The current implementation focuses on translating a limited set of neural

patterns into predefined textual outputs and does not yet support complex sentence generation.

3. Real-time EEG signal acquisition using dedicated brain-computer interface hardware was not implemented, and the system was evaluated primarily using publicly available datasets.
4. EEG signals are highly sensitive to noise and artifacts caused by eye movement, muscle activity, and external electrical interference, which may affect model prediction accuracy.
5. The deep learning model was trained and evaluated in a CPU-based development environment, which may limit training speed and large-scale experimentation.

#### X.FUTURE SCOPE

1. We are trying to Integrate the real-time EEG acquisition devices such as brain-computer interface headsets to enable live brain signal decoding.
2. Expansion of the NLP module to support generation of more complex and context-aware textual sentences.
3. Training the model on larger and more diverse EEG datasets to improve generalization and robustness.
4. Implementation of advanced deep learning architectures such as Transformer-based neural networks for improved brain signal interpretation.
5. Optimization of the system for real-time deployment on edge devices and portable healthcare systems.

#### XI.REFERENCES

- [1] G. Schalk, D. McFarland, T. Hinterberger, N. Birbaumer, and J. Wolpaw, "BCI2000: A general-purpose brain-computer interface system," *IEEE Transactions on Biomedical Engineering*, vol. 51, no. 6, pp. 1034–1043, 2004.
- [2] A. Gramfort, M. Luessi, E. Larson, D. Engemann, D. Strohmeier, C. Brodbeck, R. Goj, M. Jas, T. Brooks, and M. Hämäläinen, "MNE software for processing MEG and EEG data," *NeuroImage*, vol. 86, pp. 446–460, 2014.
- [3] F. Lotte, M. Congedo, A. Lécuyer, F. Lamarche, and B. Arnaldi, "A review of classification algorithms for EEG-based brain-computer interfaces," *Journal of Neural Engineering*, vol. 4, no. 2, pp. R1–R13, 2007.
- [4] Y. LeCun, Y. Bengio, and G. Hinton, "Deep learning," *Nature*, vol. 521, pp. 436–444, 2015.
- [5] H. Cecotti and A. Gräser, "Convolutional neural networks for P300 detection with application to brain-computer interfaces," *IEEE Transactions on Pattern Analysis and Machine Intelligence*, vol. 33, no. 3, pp. 433–445, 2011.
- [6] R. T. Schirrmeister et al., "Deep learning with convolutional neural networks for EEG decoding and visualization," *Human Brain Mapping*, vol. 38, no. 11, pp. 5391–5420, 2017.
- [7] V. J. Lawhern, A. J. Solon, N. Waytowich, S. M. Gordon, C. Hung, and B. J. Lance, "EEGNet: A compact convolutional neural network for EEG-based brain-computer interfaces," *Journal of Neural Engineering*, vol. 15, no. 5, 2018.
- [8] A. Bashivan, I. Rish, M. Yeasin, and N. Codella, "Learning representations from EEG with deep recurrent-convolutional neural networks," *International Conference on Learning Representations (ICLR)*, 2016.
- [9] S. Sakhavi, C. Guan, and S. Yan, "Learning temporal information for brain-computer

interface using convolutional neural networks,” *IEEE Transactions on Neural Networks and Learning Systems*, vol. 29, no. 11, pp. 5619–5629, 2018.

[10] B. Blankertz, G. Curio, and K. Müller, “Classifying single trial EEG: Towards brain computer interfacing,” *Advances in Neural Information Processing Systems*, pp. 157–164, 2002.

[11] M. Tangermann et al., “Review of the BCI competition IV,” *Frontiers in Neuroscience*, vol. 6, 2012.

[12] EMOTIV Systems Inc., “EMOTIV EPOC+ EEG Headset Technical Specifications,” EMOTIV Inc., San Francisco, USA.