

## CAMPUS CONNECT

**Sanika Adagane , Kajal Bagal , Jeenat Gaiban , Afnaan Attar , Pragati Girme**

*Sanika S. Adagane (Student), Computer Science and Engg., Sanjay Ghodawat Institute*

*Kajal T. Bagal (Student), Computer Science and Engg., Sanjay Ghodawat Institute*

*Jeenat F.Gaiban(Student), Computer Science and Engg., Sanjay Ghodawat Institute*

*Afnaan M.Attar(Student), Computer Science and Engg., Sanjay Ghodawat Institute*

*Guide: Ms. Pragati.J.Girme(Lecturer), Computer Science and Engg., Sanjay Ghodawat Institute*

\*\*\*

### Abstract –

The project named “Campus Connect” is aimed to create a centralized web-based platform that is intended to fill the gap between fresh graduates and target employers. The system will be an online web application that can be accessed by the college student , the company and the college itself with proper login provided. The system can be used as an application for student or the fresher’s to apply for the job. This application is built using modern web development technologies, ensuring the scalability and ease of use. It also aims to reduce efforts with campus placement. The entire recruitment process gets easy for both the students and the recruiters. This campus connect platform enhances the experience of seeking a job for fresher’s. It also postthe opportunities of job and also help for hiringprocess. This system is designed with three user roles: students, college as a mediators, recruiterseach are provided with special login access and functionalities.

### 1.INDRODUCTION

Transitioning from college to the working world can be tough for new graduates as they often struggle to find jobs and go through recruitment processes. CampusConnect was created to help with this by connecting students with employers in an easy and stress-free way. It’s an online platform where students can make professional profiles, upload resumes, and apply for jobs specifically for fresh graduates. Employers can post jobs, view student profiles, and manage applications all in one place. The platform also provides helpful tools like resume builders and real-time application tracking, making it easier for students and recruiters to communicate and get hired. CampusConnect aims to make campus recruitment simpler and more efficient for everyone involved. In addition to making job search process more organized, CampusConnect also elevates college placement by connecting educational institutions with the corporate world. This enables the colleges to keep a track of student placement activities, campus drives management and have a better one to one interaction with recruiters. This ranges from skill assessment to career guidance, helping students identify where their qualifications fall short and how they can be better placed for the job market. CampusConnect simplifies the recruitment process by providing real-time updates to the students and thereby a centralized placement activity

management system which helps in seamless transition from education life to working environment for both student as well as companies. The platform is built to scale with students, providing resources for sustained growth throughout their careers.

## 2. Review of Literature

### 2.1 Study of Existing System

The literature review on **CampusConnect** highlights gaps in existing job placement systems, particularly those serving fresh graduates. Current job portals like **Naukri** and **LinkedIn** lack personalization for freshers and have oversaturated listings, while university placement cells rely on manual, inefficient processes with limited reach. Recruitment platforms such as Handshake offer good matching features but are often expensive and exclusive to specific universities. Meanwhile, online learning platforms like Coursera or GitHub provide skill-building but lack direct employment pathways.

**Key gaps** identified include the lack of focus on freshers, inefficient placement systems, and high costs associated with recruitment tools. CampusConnect aims to address these issues by offering a customizable, automated, and affordable platform tailored specifically for freshers, streamlining the recruitment process and making it accessible to a broader audience.

### 2.2 Finding from Literature review

CampusConnect aims to streamline the recruitment process by **connecting fresh graduates with potential employers through an intuitive platform**. By bridging the gap between students and recruiters, it enhances job placement opportunities and simplifies talent acquisition for companies.

### 2.3 Problem Statement

CampusConnect is an innovative solution that helps to close the disconnect that exists in the recruitment process between students, institutions of higher learning and prospective employers. For the most part, the average fresh graduate seeking employment is not actively offered positions that are in line with their level of education or skill set and the same applies to employers who seek to hire individuals but cannot find people who fit the occupation, especially from lower-tier educational institutions. In addition, an online platform which can effectively optimize placements and career advising for colleges so that every student pursuing a particular field is well tailored to meet that industry's needs cannot be found. This typically means poor feedback, lack of engagement, some opportunities being lost and general lack of work. The investors argue that this gap can be addressed through provision of a domain where students are able to construct and showcase professional profiles, educational institutions help students to search for work and get insights about the employment market and businesses hire suitable candidates from lower tier colleges.

### 2.4 Project Scope

CampusConnect processes the scenario of constructing a missing end to end portal to students/colleges/companies that can help conduct any placement and internship activities. The platform provides features such as:

- 1) **Students to register** (Creating of the student profile, uploading of the resume and application for jobs);
- 2) **College Mediator** (this includes student data management, monitoring/ reporting of placement activities, connection with the recruiters);
- 3) **Companies** (this includes job posting, in order to view the students' profiles, and recruiting students).

This will be further enhanced with elements such as assessments, skill building tools and career advice for better employment outcomes. It will as well give a perspective in relation to the monitoring of placement figures and how the college can improve its placement cycle approaches. CampusConnect is such that the system is easily adjustable and it can adapt from an institution as small as 2 students in a garage to a university and readapt for various field of industries even on the go.

### 3. Objective of Proposed System

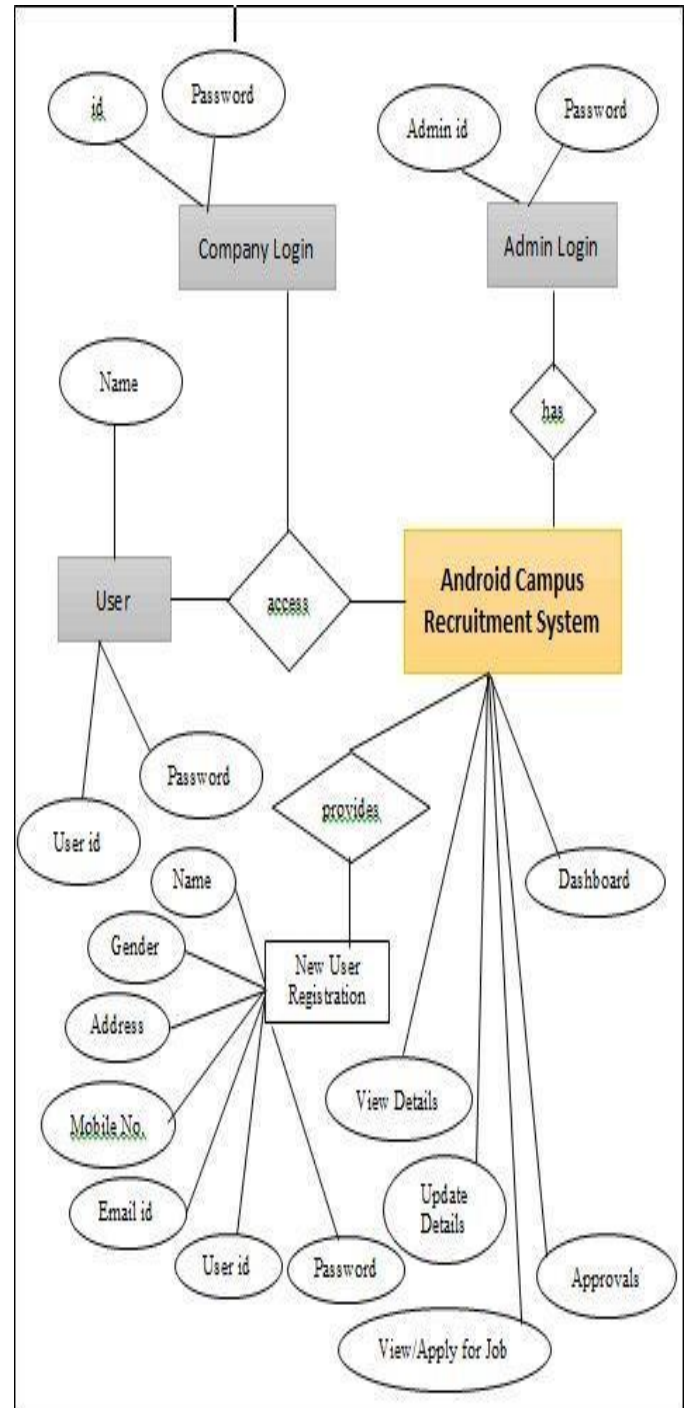
**1 .Easy placement of fresh graduates to jobs:** The primary objective is place fresh graduates to into suitable job roles. Student get to know their potential by giving the mock interview after preparing from the notes provided by our campus connect web site. The notes may include aptitude test, for CSE we will provide with some technical questions, for other branches it will also have the question set for it, also we will be providing with logical and reasoning questions and many more things.

**2. Streamline Hiring Process for Recruiters:** Through this web application recruiters can easily post the job opening, access students profile, also they can search for the candidates based on specific qualification and skill sets. This helps reducing timeand effort required for the recruiters to find and hire qualified and needed candidates.

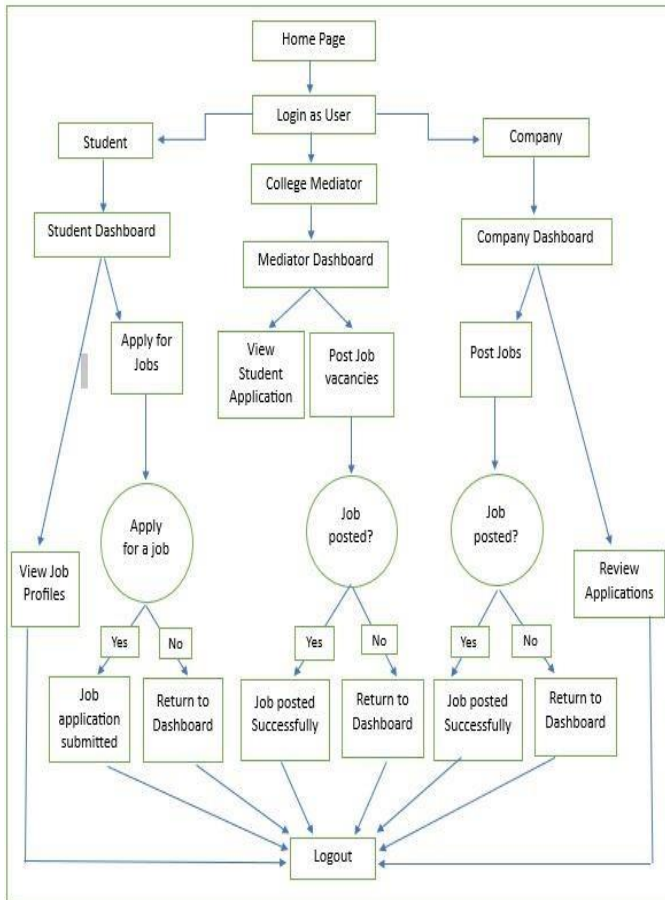
**3. College-Industry Partnership:** Companies can gain easy access to number of fresh talent, reducing the effort and the cost associated with campus recruitment methods. Colleges can work and understand the demands of various industries and also companies can understand the students in college their.

## 5. Methodology

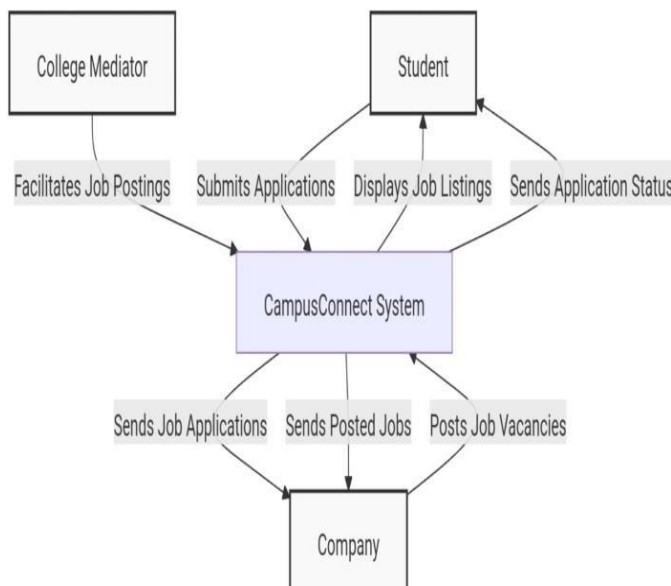
### 5.1 Flow Diagram



## 5.2 Flow diagram



## 5.3 DFD Diagram



## 5.4 Modules of Software System

- ✓ **Student** : The primary user who applies for job opportunities posted by companies via the platform.
- ✓ **College Mediator** : Acts as a bridge between students and companies, helping facilitate job posting and recruitment processes.
- ✓ **Company** : Posts job vacancies, reviews applications, and conducts recruitment processes for students.

## 6. Requirements

### 6.1 Software Requirements

#### 6.1.1 Frontend

- ✓ HTML
- ✓ Tailwind CSS
- ✓ React JS

#### 6.1.2 Backend

- ✓ Django
- ✓ Firebase

## 7. Application of Proposed System

Campus Connect is a web-based platform designed to bridge the gap between students, colleges, and companies, making the recruitment and placement process more efficient. Campus Connect provides a one-stop solution for job placements, career development, and industry-academia collaboration.

There are several major advantages of the Campus Connect platform:

### 1. Facilitated Dating:

It becomes easy for students to interact with the companies for Campus Connect. They are able to seek out internship and job postings, while recruiters can look up candidates and select them due to their profiles and test results.

## 2. Assistance on College Placements:

Colleges can also avail of Campus Connect to ascertain students' job applications and placement pressures. It helps them arrange campus recruitment drives and enables students to interact with firms more.

## 3. Assistance Towards Career Path :

The platform is inclusive of career guidance, assessment tests, and other tools that help students prepare for careers. It shows them what aspects they need to work on and gives them courses necessary for their improvement gives them courses necessary for their improvement.

## 8. Advantages and Disadvantages

### 8.1 Advantages

1. Improved Job Opportunities
2. Centralized Information
3. Enhanced College Support
4. Skill Development Resources
5. Real-time Updates
6. Networking Opportunities
7. User-friendly Interface
8. Customizable Profiles
9. Feedback Mechanisms
10. Data Analytics for Colleges

### 8.2 Disadvantages

1. Dependence on Technology
2. Digital Divide
3. Quality of Job Listings
4. Information Overload

## 5. Privacy Concerns

## 6. Limited Job Market Reach

## 9. Conclusion and Future Work

As a whole, Campus Connect links students to interest shows, colleges, and employers, serving towards the enhancement of recruitment and job placement. This software would implement a centralized channel for job applications, placement management, and career development to address issues that recent graduates and educational institutions face. Future work on Campus Connect should involve enhanced data analytics, enhanced machine learning for personalized job recommendations, and more active user engagement strategies. In addition, partnership arrangements with more companies and colleges will enhance its scope, coverage, and impact to support more students in their career journeys.

In addition to making job search process more organized, CampusConnect also elevates college placement by connecting educational institutions with the corporate world. This enables the colleges to keep a track of student placement activities, campus drives management and have a better one to one interaction with recruiters. This ranges from skill assessment to career guidance, helping students identify where their qualifications fall short and how they can be better placed for the job market. CampusConnect simplifies the recruitment process by providing real-time updates to the students and thereby a centralized placement activity management system which helps in seamless transition from education life to working environment for both student as well as companies. The platform is built to scale with students, providing resources for sustained growth through their careers.



## 10 Bibliography

- 1.Smith, J. (2020). Job Placement Platforms and Their Role in Higher Education. New York: Academic Publishing.
- 2.Brown, A., & Green, M. (2019). Innovations in Education Technology: Bridging the Gap Between Students and Employers. Journal of Educational Research, 15(4), 45-60.
- 3.Gupta, R. (2021). Developing Web Applications: Frontend and Backend Techniques. TechWorld Publishing.
- 4.Institute of Web Development. (2022). Best Practices in User Interface Design for Recruitment Platforms. Retrieved from <https://www.iwd.org/recruitment-platforms>
- 5.Taylor, S. (2018). React for Beginners: A Step-by-Step Guide to Building Web Apps. Programming Books, Inc.
- 6.W3Schools. (2023). Database Management Systems: Integration with Web Platforms. Retrieved from <https://www.w3schools.com/dbms>