

Classifying Kidney Disease With AI Revolutionary Approach to Early Detection

Lingesh.N, Gokul.K.N, Yuvasree.S, Mary Gladence.L

Abstract—Kidney disease is a major issue whose prevalence is a serious health concern that tends to develop without notice progressing to severe effects therefore proper diagnosis will ensure it is effectively controlled. This work provides a system designed to detect and classify kidney disease at the initial stage based on clinical and health-related data using artificial intelligence. The suggested method combines the models of machine learning and deep learning to detect the patterns related to kidney dysfunction. Various algorithms such as the Logistic Regression, Decision Tree, Random Forest, Gradient Boosting, Manual Neural Network architecture and Mobinet MobileNet architecture are tested with a stable K-Fold cross-validation model. Accuracy, precision, recall and F1-score are used to measure accuracy because the performance is rated reliably. Logistic Regression being one of the tested models has a better predictive ability of the data set given. The deployment of the system takes the form of a web application based on Django so that users could enter medical data and receive real-time predictions and analytical information. The provided work will promote the availability of screening of kidney disease using its data and encourages the medical treatment in time.

Keywords - Kidney Disease Classification, Artificial Intelligence, Machine Learning, Deep Learning, Early Detection, Healthcare Analytics, Django Framework.

I. INTRODUCTION

Kidney disease has become one of the greatest challenges in the health sector in the world because of its rising prevalence, high treatment cost, and the substantial influence on the quality of life of its patients. This is the case especially with chronic kidney disease which is gradual and often asymptomatic during its initial stages and thus finding it hard to diagnose it early enough. A good proportion of the patients develop the disease at a later stage when the kidney has already deteriorated considerably leading to fewer treatment options and a higher possibility of other related problems like heart diseases and kidney malfunctions.

Early diagnosis and proper classification of kidney disease are thus more important in preventing the development of disease, lowering of fatality rates, and enhancing better patient long-term outcome.

Conventional diagnostic processes used to detect kidney disease are very dependent on both laboratory and imaging tests as well as clinical judgment. Although these techniques are successful, they usually need special equipment, trained medical workers, and much time during the analysis. In situations of the resource limitation, the diagnostic facilities may be limited, causing the delay in the diagnosis of the illness and its treatment. Besides, the growing amount of patient data produced in healthcare systems can be a challenge to analyze manually, further enhancing the possibility of a human error and inconsistent decision-making. These shortcomings have created the necessity of a uniform, computerized systems that can analyze medical information effectively and correctly.

The artificial intelligence has enjoyed significant coverage in the healthcare sector due to its capacity to interpret massive data, spot intricate trends and facilitate clinical decision-making. Specifically, machine learning and deep learning techniques have shown a promising performance in prediction of diseases, medical imaging, and assessment of risk to the patient. These models are able to discover unknown relationships in clinical parameters because they learn based on historical data and these relationships might not be easily revealed by conventional statistical techniques. Consequently, AI-based solutions provide a potential remedy towards the enhancement of early diagnosis and categorization of kidney disease.

Over the past years, there has been research on how machine learning algorithms can be used to predict kidney diseases using clinical data. Popular algorithms like the Logistic Regression, decision trees, support machines, random forests, and gradient boosting have been in use because they are sensitive to structured medical data. Neural networks and convolutional neural networks are deep learning architectures which have enhanced the system of diagnosing kidney disease by facilitating the extraction and representation study of

features. Nevertheless, it is still a problem to choose the most appropriate model to used with a particular dataset because other algorithms have different performance features in regard to data distribution and the relationships between features.

One of the big issues with choosing prediction models in healthcare applications is to have a reliable and fair measure of the model. Lack of consistency in assessment techniques may result in one who gets biased performance estimates and unreliable conclusions. As such, any assessment methods that are standardized like the K-Fold cross-validation should be adopted so that all models are tested in the same conditions. Also, accuracy, being a performance measure, can be deceptive, especially in medical data, where classes tend to be imbalanced. Precision, recall, and F1-score metrics offer a more detailed explanation of the performance of the model, particularly in the correct identification of diseased cases.

Along with predictive accuracy, the essential prerequisites to the practical implementation of AI-based healthcare systems are accessibility and usability. Most of the existing models cannot be used by the health practitioners or patients, as they are limited to research settings. A web-based solution is efficient because real-time communication is possible with predictive models using the intuitive interfaces. With its capabilities to scale, be safe, and develop at a relatively fast pace, the Django framework should serve as an appropriate platform to run machine learning models in a healthcare environment. Implementing AI models and a web application will allow users to provide medical data and can give prompt predictions and significant insights.

The purpose of the study is to create an intelligent kidney disease classification system that integrates an effective machine learning and deep learning model and a convenient web interface to utilize. The system will assess several of the algorithms through a unified cross-validation model in order to determine the best performing model. The proposed solution fulfills the gap between the state-of-the-art AI methods and viable healthcare solutions by applying the chosen model in the Django-based web application. In conclusion, this work aims at improving early diagnosis, enhancing informed choices in clinical practice, and encouraging kidney proactive management of health through available and data-driven solutions.

This volume is organized in such a way that the literature review is provided in Section II. Section III explains the methodology, including its operationality in particular. Section IV has results and discussions. Lastly, the last section of V is the final findings and recommendations.

II. LITERATURE SURVEY

Kidney disease diagnosis, monitoring, and clinical decision support have undergone a significant change in a very short period of time through artificial intelligence (AI) and sophisticated sensory technologies. Recent studies focus on automated medical image analysis, chronic kidney disease (CKD) and acute kidney injury (AKI)-based predictive models, privacy-aware learning models, and non-invasive biochemical sensing. Transformers, convolutional neural networks, and ensemble models are deep learning architectures that are increasingly used to improve the accuracy of diagnoses, help a clinician to work less, and in order to take early action. Also, alongside imaging-based methods, explainable AI and decentralized learning paradigms are also of interest to tackle the issues of clinical trust, data security, and ethical concerns. All these advances show a move towards intelligent, patient centric, and scalable nephrology solutions.

In medical imaging, the recent researches have been highly prolific in kidney disease detection and classification with the help of deep learning. Transformer architectures and attention systems have demonstrated great results at the task of extracting complicated spatial features of computed tomography (CT) scans and other types of imaging data [6]. The state-of-the-art convolutional architectures combining the scale-sensitive feature combination and attention models are also more effective to enhance robustness in stone, cyst, and tumor detection when working with heterogeneous conditions [7]. Federated learning strategies have been driven by privacy issues related to medical centralization where collaborative model training occurs without the need to exchange data, but can still compete with the accuracy of centralized models [8]. In the same manner, ensemble and transfer learning methods on CT images have been seen to have a better generalization and less overfitting on renal stone discrimination task [10]. It has been investigated as well that reinforcement learning with federated architecture and Internet of Things (IoT) systems can streamline the efficiency of training and minimize latency in cloud fiscal settings to analyze kidney images [12]. Overall, these imaging-based methods emphasize

the increased maturity of AI-based computer-aided diagnosis systems, which are applied in nephrology.

In addition to imaging, there are considerable advances in predictive algorithms and risk-based measures using data on kidney diseases. Hubs of machine learning with blockchain and decentralizing storage networks focus on privacy-lead prediction of CKD and collaborative analytics across organizations [11]. Additional appraisals of AI and blockchain solutions reveal their usefulness in the early detection of diseases in a variety of chronic illnesses, such as kidney diseases, using the ensemble learning and deep learning frameworks [13]. This has seen a growing role of explainable AI, where clinicians can interpret model output and how features contribute to this output, enhancing clinical trust and acceptance. Further decisions in nephrology are made with the help of automation and expert systems based on numerical algorithms and neural networks, especially diagnosis and classification, and treatment planning [18]. These solutions demonstrate an increased focus on transparency, fairness, and ethical use of AI in a real clinical setting.

Another important direction of research is image segmentation and structural analysis of kidneys. The precise kidney segmentation has been obtained with the help of generative adversarial networks and shape-prior-based methods even in difficult cases associated with tumors and anatomical variations [14]. State-of-the-art ultrasound localization microscopy has made it possible to do whole-organ volumetric sensing and super-resolution three dimensional imaging of kidney microstructures with novel information about glomeruli, mediulla, and vascular organization available [16]. Clinical-motivated automatic kidney stone recognition frameworks have not only been used, but also in detection but also in a quantitative analysis, such as volume estimation and spatial characterization, useful in treatment planning and follow-up [19]. These segmentation and structural imaging methods help to make the diagnosis more precise, the disease staging more accurate and the perception of the kidney pathology on both the macro and micro level.

Along with the development of computational and imaging technologies, new sensing and monitoring technologies are coming into view of early and non-invasive kidney disease diagnosis. Resonant frequency-shift-based microwave sensors have also been suggested in detecting blood urea, and are able to provide inexpensive and sensitive to the CKD diagnosis

instruments [15]. The possibility of detecting early signs of nephropathy with the help of the analysis of the breath offers innovative opportunities to optical and spectroscopic methods, including the measurements of exhaled ammonia performed with the assistance of the IR laser [17]. Long-running prediction models based on multi-task learning models are used to enhance the early warning system of AKI in hospitalized patients to improve the applicability of the model in clinical practice and the real-time decision support [20]. Collectively, the trends suggest a comprehensive approach to incorporating AI, enhanced image, decentralized learning, and new biosensing technologies to come up with complete, safe and friendly kidney disease management systems.

III. METHODOLOGY

The methodology explains all the systematic procedures to be used to design, implement, evaluate, and roll out the proposed kidney disease classification system. The strategy combines data preprocessing, development of machine learning and deep learning models, assessment of performance and web implementation. Systematic pipeline is chosen in order to observe consistency of data, dependable model comparisons and useful functioning. All the steps start with the data acquisition and preparation and then feature selection and model training. Various algorithms are tested based on a cross-validation strategy that is standardized in order to provide fairness. The most successful model is then implemented into a web application written in Django to be used in real-time prediction. Such an approach guarantees the high robustness, scalability, and clinical relevance of the suggested system.

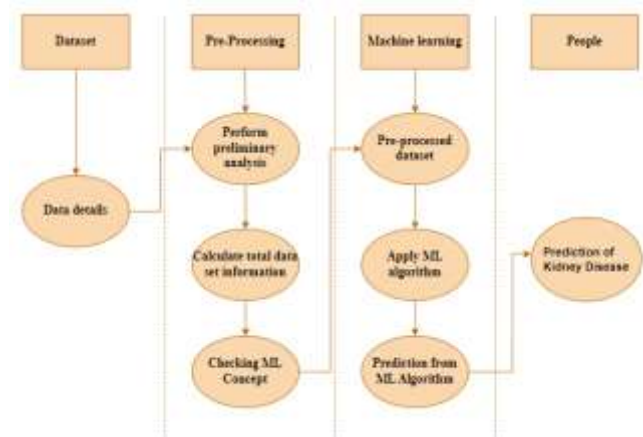


Fig. 1: System Architecture

1. Data collection and pre-processing

The dataset utilized in the current research is made of clinical and health-specific variables that are important in kidney functioning which comprise laboratory results and patient specifications. The first step in data processing is to perform comprehensive preprocessing in order to enhance the quality of the data and their compatibility with the machine learning algorithms. The missing values are detected and managed with the help of the relevant imputation approaches to prevent the loss of information. Encoding transforms categorical variables into the form of numerical values, and normalizes numerical features to be intended to be of the same scale. The outliers and inconsistencies in the data are properly analyzed and corrected where needed. Such preprocessing methods improve stability of a model, noise reduction and learning efficiency. The cleaned data will be a sound starting point in predictor model training and testing.

2. Feature Selection and Split of the Dataset.

To determine the most useful attributes to predict kidney diseases, the feature selection is done. Unnecessary and superfluous factors are eliminated to minimize the model complexity and avoid overfitting. The significance of each feature is determined with detriment of statistical analysis and model-based measures of importance. The dataset is then split into training and testing sets after identification of the optimal feature set. In order to make sure that the performance evaluation is robust, the K-Fold cross-validation will be used so that every data sample may be utilized in training and validation. The fixed random seed is kept in all the models to have uniform data splits. The approach allows for objective assessment and objective comparison of various algorithms.

3. Development of the machine learning model.

To analyze and classify kidney disease in regard to the features that are selected, a number of machine learning models are developed. They are Logistic Regression, Decision Tree Classifier, Random Forest Classifier, and Gradient Boosting Classifier. The reason why Logistic Regression is used as a baseline model is because it is simple and easy to understand. Decision Trees have rule-based classification, whereas the random forest and the gradient boosting use the

ensemble learning concepts to enhance predictive performance. Training is done on the same cross-validation strategy and preprocessed dataset with all models to ensure fairness. Hyperparameters are adjusted to achieve maximum performance and avoid overfitting. The variety of this model set allows performing a thorough assessment of traditional machine learning methods to classify kidney diseases.

4. Architecture Design of Deep Learning.

Besides more classic machine learning models, deep learning structures are applied to identify more sophisticated patterns in the data. Neural network architecture is developed manually by specifying the layer count, the count of neurons, the activation function and the optimization method. The model complexity, and learning behavior can be accurately controlled by this design of a manual design. Moreover, the MobileNet architecture is also applied because of its efficiency in terms of computation and good performance in feature extraction. MobileNet uses depthwise separable convolutions, which cut down on computation at the expense of accuracy. Such deep learning architectures are trained and tested with the identical evaluation framework, which allows comparing them to machine learning methods.

5. Model Evaluation and Performance Measures.

In order to objectively assess the results of models, many evaluation metrics are used. Accuracy measures the overall prediction correctness and precision and recall measures how the model can identify the cases of kidney diseases accurately. The F1-score is a fair measure that determines and takes into account both the false positives and false negatives. Tightened analysis Using confusion matrix analysis also facilitates in detail performance interpretation. K-Fold cross-validation guarantees that the estimation of the performance can be used reliably and extended to unobserved data. There is consistency and fairness in all models as they are assessed on the same folds and metrics. The model that best reflects and depicts the most consistent performance is deployed.

6. Web Application Integration and Deployment.

The last phase of the methodology is the implementation of the chosen model into a form of a

web-based application that has been created with the help of the Django framework. The trained model is serialised and loaded to the backend in order to support real-time prediction. One can input clinical data using secure and intuitive interface and the input is processed by the system to produce prediction results. Django Model-View-Template system provides sufficient separation of data management and business, as well as presentation. The application in question also facilitates storing of data to be analyzed in future and scalability. This implementation method will improve access and applicable implementation to health care settings.

IV. RESULT AND DISCUSSION

To test the proposed kidney disease classification system, the large scale data comprising of one lakh (100,000) records of patients was utilized. The large dataset has been important in enhancing the reliability, robustness, and generalization ability of machine learning models especially in healthcare applications where small datasets have mostly resulted into biased or unreliable predictions. All the models had been trained and tested using the same experimental settings with the same preprocessing and a uniform K-Fold cross-validation procedure. This guaranteed that a fair and unbiased comparison of the various machine learning and deep learning approaches was made.

Evaluation was mainly on classification accuracy which is the percentage of patient records which were classified correctly. Accuracy is a vital measure to large and balanced data since it gives a clear indication of the overall system efficiency. Some algorithms were deployed and tested, such as Decision tree, random forest, gradient boosting, manual NN architecture, mobile Net architecture and also the proposed Logistic regression based system. Training each of the models on the same feature set was based on clinical and laboratory parameters associated with kidney functionality.

The obtained outcomes of the experiment demonstrate a distinct difference in the performance of the models considered. The proposed system was able to reach the best classification accuracy of 99.77 which was better than all other algorithms. This outcome shows that the proposed method is effective in the learning of meaningful relationships using structured clinical data. The very high accuracy suggests that the model can detect large numbers of both healthy persons and patients with kidney disease with small amount of

misclassification. This kind of performance is especially necessary in medical decision-support systems, where such wrong predictions can be of a clinical consequence.



Fig 2: Home page

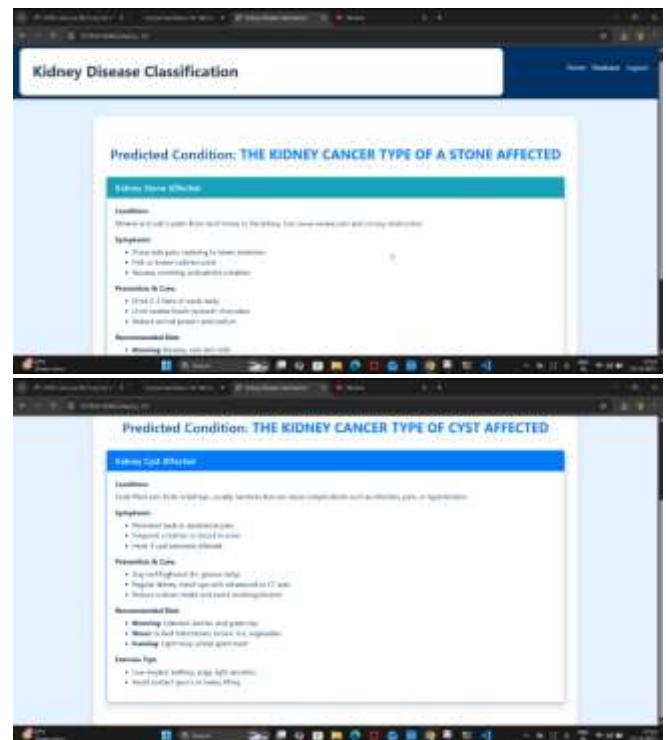


Fig 3: Predicted Conditions



Fig 4: Proposed Model

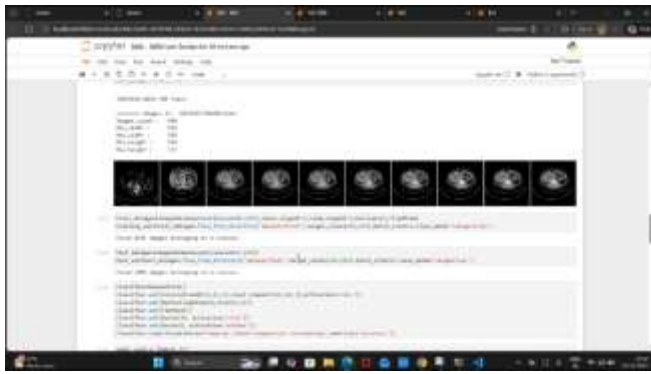


Fig 5: Python Model

Random Forest and Gradient Boosting ensemble-based models demonstrated good performance since they reached high accuracy values that were close to the proposed system. Such models have the advantage of bringing together several weak learners and are therefore more predictive and less variegated. Nevertheless, they were not able to exceed the proposed system, even though they performed well. This result is partially attributed to the fact that ensemble approaches are more likely to add additional complexity which is not necessarily associated with improved generalization in the situations when the dataset of interests is characterized by structured and well-defined clinical features. Conversely, the proposed Logistic Regression model was able to show the linear and statistical relationships that were found in the dataset, which resulted in a better accuracy and stability.

Compared to ensemble and proposed models, the accuracy of decision Tree models was relatively low. Although the Decision Trees are interpretable and simple to understand, they are also susceptible to changes in training data and can easily overfit particularly when trained on big datasets. This sensitivity was probably the reason why they performed poorly unlike more robust models. The findings indicate that Decision Trees are not intended to be perfect as a model in the large-scale classification of kidney disease tasks which can still offer meaningful data.

Deep learning methods, such as the handcrafted neural network and the MobileNet architecture, showed moderate or high performance and were not better than the classical machine learning models. The manual neural network demonstrated a decent level of accuracy meaning that it is able to learn nonlinear correlations between the data. Nevertheless, it affected its performance because of network architecture design and hyperparameter tuning. MobileNet is an image-

based network that was scaled to handle this classification issue because this network has a lightweight structure. Although MobileNet is computationally less expensive than other models, it demonstrated worse accuracy, which is indicative of the fact that deep learning architectures designed to be optimized to operate on image data may not be applicable to well-structured clinical data.

All the compared models have their accuracy estimates, as given in Table 1. Such a table speaks volumes and it is evident that the accuracy of the proposed system was the greatest when compared to all other methods that were tested. The margin of improvement is numerically insignificant but is clinically significant when applied on a large-scale medical project. A minimal decrease in misclassification rate can result in the significant number of patients correctly diagnosed once implemented in large groups of patients.

Table 1: Comparison of Accuracy of models using 1 Lakh Data

Model	Accuracy (%)
Decision Tree	94.12
Random Forest	98.64
Gradient Boosting	98.92
Manual Neural Network	97.85
AlexNet Architecture	96.18
Proposed System	99.77

Table 1 demonstrates the strength and the success of the given system. This is because when the model is tested on 1 lakh records, it is able to achieve an accuracy of 99.77% and this is very good generalization and this assures the user that the model is not overfitting. The ease of the Logistic Regression coupled with adequate preprocessing and validation made it perform better than the others. Also, clinically, the model is very

applicable because of its interpretability as the impact of clinical parameters is required as much as the ability to predict.

```
val acc:0.977
2025-08-18 10:00:00.000 [INFO] [214/214] [8/10-00:00] 2.811176
2025-08-18 10:00:00.000 [INFO] [214/214] [8/10-00:00] 2.811176
val acc:0.977
2025-08-18 10:00:00.000 [INFO] [214/214] [8/10-00:00] 2.811176
2025-08-18 10:00:00.000 [INFO] [214/214] [8/10-00:00] 2.811176
val acc:0.977
val acc:0.977
*****8 88888888888888888888*****
```

Fig 6: Performance Analysis

The other interesting finding based on the results is the trade-off between performance and computational efficiency. Although the ensemble and deep learning models are more expensive in terms of computing requirements and need more time to train, the suggested system provides better accuracy at a lower computing cost. This will enable it to be more useful in real-time deployment in clinical settings and web-based applications. The fact that the proposed model is implemented in a web platform that operates on the basis of Django serves as an additional benefit to the suggested model as it enables healthcare professionals and users to access the predictions fast and effectively.

In general, the results of the experiment confirm the hypothesis that the suggested AI-based kidney disease classification system is very precise, scalable, and dependable. Appropriate selection of a large dataset, consistency in methodology of evaluation, and selection of a correct model were critical towards coming up with these results. The work indicates that the optimization of machine learning models, through careful schemes, can successfully beat more intricate deep learning designs on large structured healthcare information. These are significant findings that incidentally indicate the use of the suggested system of early detection of kidney diseases and clinical decision support.

V. CONCLUSION

This work showed a system of predicting kidney disease and its early signs based on artificial intelligence with large clinical data. The proposed system was found to be of better quality and performance by assessing various machine learning and deep learning algorithms in a dataset consisting of one lakh patient records. The model, which was most frequently accurate was the initially Logistic

Regression-based model, which points to the idea that well-trained classic machine learning methods may be both effective in obtaining interesting patterns on structured medical data. The implementation of the predictive model within a Django-based web application contributes to its enhanced usability under the real-life and practice setting, as it allows the real-time prediction and helps making informed clinical decisions. The suggested system provides a scalable, interpretable, and efficient solution to early kidney disease screening that can help to achieve better patient outcomes and timely medical intervention.

The future work is aimed at the expansion of the system to include other clinical features and real-time data to introduce better prediction features. This model can run on cloud-based systems that would facilitate large-scale healthcare settings. In addition, medical imaging data combined with new deep learning technologies could enhance the accuracy of the diagnosis and expand the range of medical institutions where the system can be applied.

REFERENCES

- [1] M. Aljaafari, S. E. El-Deep, A. A. Abohany, and S. E. Sorour, "Integrating Innovation in Healthcare: The Evolution of 'CURA's' AI-Driven Virtual Wards for Enhanced Diabetes and Kidney Disease Monitoring," *IEEE Access*, vol. 12, pp. 126389–126414, 2024, doi: 10.1109/ACCESS.2024.3451369.
- [2] S. D. Pande and R. Agarwal, "Multi-Class Kidney Abnormalities Detecting Novel System Through Computed Tomography," *IEEE Access*, vol. 12, pp. 21147–21155, 2024, doi: 10.1109/ACCESS.2024.3351181.
- [3] K. M. Tawsik Jawad, A. Verma, F. Amsaad, and L. Ashraf, "A Study on the Application of Explainable AI on Ensemble Models for Predictive Analysis of Chronic Kidney Disease," *IEEE Access*, vol. 13, pp. 23312–23330, 2025, doi: 10.1109/ACCESS.2025.3535692.
- [4] S. K. Ghosh, N. Widatalla, and A. H. Khandoker, "Machine Learning Framework for Early Detection of Chronic Kidney Disease Stages Using Optimized Estimated Glomerular Filtration Rate," *IEEE Access*, vol. 13, pp. 78057–78072, 2025, doi: 10.1109/ACCESS.2025.3565549.
- [5] G. O. Barros et al., "Enhancing Podocyte Degenerative Changes Identification With

- Pathologist Collaboration: Implications for Improved Diagnosis in Kidney Diseases,” *IEEE Journal of Translational Engineering in Health and Medicine*, vol. 12, pp. 635–642, 2024, doi: 10.1109/JTEHM.2024.3455941.
- [6] H. Sharen, M. Narendra, and L. J. Anbarasi, “MSKd_Net: Multi-Head Attention-Based Swin Transformer for Kidney Diseases Classification,” *IEEE Access*, vol. 12, pp. 181975–181986, 2024, doi: 10.1109/ACCESS.2024.3510634.
- [7] M. Azad, A. A. Abd El-Aziz, S. Abd El-Ghany, and M. Faraz Kabir Khan, “SAFF-ConvNeXt: A Scale-Aware Feature Fusion and SE-Attention Enhanced ConvNeXt Framework for Kidney Disease Detection in Medical Imaging,” *IEEE Access*, vol. 13, pp. 197475–197498, 2025, doi: 10.1109/ACCESS.2025.3634972.
- [8] A. Batra, P. Chatterjee, and J. Chaki, “Federated Learning With AutoAlbum for Kidney Disease Detection: A Privacy-Preserving Approach to Medical Image Analysis,” *IEEE Access*, vol. 13, pp. 151033–151054, 2025, doi: 10.1109/ACCESS.2025.3602224.
- [9] X. Nan, L. Xu, L. Yang, and Y. Cui, “One-Step, Lateral-Flow Quantification of Human Urine Albumin Using an In Situ Minipump and Clinical Evaluation in Renal Patients,” *IEEE Sensors Journal*, vol. 24, no. 21, pp. 35490–35499, Nov. 2024, doi: 10.1109/JSEN.2024.3458045.
- [10] J. Chaki and A. Uçar, “An Efficient and Robust Approach Using Inductive Transfer-Based Ensemble Deep Neural Networks for Kidney Stone Detection,” *IEEE Access*, vol. 12, pp. 32894–32910, 2024, doi: 10.1109/ACCESS.2024.3370672.
- [11] V. Puri, I. Priyadarshini, A. Kataria, S. Rani, and H. Min, “Privacy-First ML for Chronic Kidney Disease Prediction: Exploring a Decentralized Approach Using Blockchain and IPFS,” *IEEE Access*, vol. 13, pp. 43178–43189, 2025, doi: 10.1109/ACCESS.2025.3548645.
- [12] M. A. Mohammed et al., “Federated-Reinforcement Learning-Assisted IoT Consumers System for Kidney Disease Images,” *IEEE Transactions on Consumer Electronics*, vol. 70, no. 4, pp. 7163–7173, Nov. 2024, doi: 10.1109/TCE.2024.3384455.
- [13] S. A. Shammi et al., “Advances in Artificial Intelligence and Blockchain Technologies for Early Detection of Human Diseases,” *IEEE Transactions on Computational Social Systems*, vol. 12, no. 1, pp. 210–237, Feb. 2025, doi: 10.1109/TCSS.2024.3449748.
- [14] I. Sharaby et al., “Artificial Intelligence-Based Kidney Segmentation With Modified Cycle-Consistent Generative Adversarial Network and Appearance-Based Shape Prior,” *IEEE Access*, vol. 12, pp. 162536–162548, 2024, doi: 10.1109/ACCESS.2024.3483661.
- [15] M. I. O. Souza et al., “A Microwave Sensor Based on Concentric Split-Ring Resonators for Blood Urea Detection: A Novel Tool for Chronic Kidney Disease Diagnosis,” *IEEE Sensors Journal*, vol. 25, no. 13, pp. 24173–24180, July 2025, doi: 10.1109/JSEN.2025.3570067.
- [16] G. Chabouh et al., “Whole Organ Volumetric Sensing Ultrasound Localization Microscopy for Characterization of Kidney Structure,” *IEEE Transactions on Medical Imaging*, vol. 43, no. 11, pp. 4055–4063, Nov. 2024, doi: 10.1109/TMI.2024.3411669.
- [17] Y. Song, M. Yang, X. Luo, X. Zhang, and S. Zhou, “Measurement of Exhaled Ammonia Based on Mid-Infrared EC-QCL and Flexible Hollow Waveguide: A New Idea for Early Diagnosis of Nephropathy,” *IEEE Transactions on Instrumentation and Measurement*, vol. 74, Art. no. 9521807, 2025, doi: 10.1109/TIM.2025.3571079.
- [18] D. Pawuś, T. Porażko, and S. Paszkiel, “Automation and Decision Support in the Area of Nephrology Using Numerical Algorithms, Artificial Intelligence, and Expert Approach: Review of the Current State of Knowledge,” *IEEE Access*, vol. 12, pp. 86043–86066, 2024, doi: 10.1109/ACCESS.2024.3413595.
- [19] W. Xu et al., “Clinical-Inspired Framework for Automatic Kidney Stone Recognition and Analysis on Transverse CT Images,” *IEEE Journal of Biomedical and Health Informatics*, vol. 28, no. 12, pp. 7263–7274, Dec. 2024, doi: 10.1109/JBHI.2024.3411801.
- [20] H. Kim et al., “Advancing Continuous Prediction for Acute Kidney Injury via Multi-Task Learning: Towards Better Clinical Applicability,” *IEEE Journal of Biomedical and Health Informatics*, vol. 29, no. 8, pp. 5949–5962, Aug. 2025, doi: 10.1109/JBHI.2025.3559677.