

# “Drone-Based Transmission Line Inspection Systems: A Comprehensive Overview”

Prem Bombale, Aman Ranjan, Tanushri Bagde, Snigdha Patil

## Abstract

The inspection of transmission lines is a critical task in power systems to ensure uninterrupted electricity supply and prevent faults. Traditional inspection methods are time-consuming, risky, and require manual effort. This project presents a drone-based transmission line inspection system that utilizes unmanned aerial vehicles (UAVs) for efficient monitoring of power lines.

The proposed system integrates a drone equipped with a high-resolution camera, sensors, and wireless communication modules to capture real-time data of transmission lines. The drone can detect faults such as damaged conductors, insulator cracks, vegetation interference, and overheating components. The collected data is transmitted to a ground station for analysis.

This approach improves safety by reducing human involvement in hazardous environments and enhances inspection accuracy. The system is cost-effective, time-efficient, and suitable for modern smart grid applications. The project demonstrates the potential of drone technology in revolutionizing power system maintenance and monitoring.

The reliability of electrical power transmission systems largely depends on the timely detection and maintenance of faults in transmission lines.

Traditional inspection methods are labor-intensive, time-consuming, and often expose personnel to hazardous environments. To overcome these limitations, this project focuses on the development and implementation of drone-based transmission line inspection system. The proposed system utilizes with high-resolution cameras and various sensors to capture real-time data and images of transmission line components such as conductors, insulators, and towers.

The collected data are analyzed to identify defects like corrosion, cracks, vegetation encroachment, and loose fitting. The use of drones significantly improves inspection efficiency, accuracy, and safety while reducing operational costs and downtime.

This project demonstrates how drone technology, combined with image processing can revolutionize power line monitoring and maintenance, ensuring a more reliable and sustainable power transmission network.

Keywords: Drone, Transmission Line Inspection, UAV, Smart Grid, Fault Detection, Monitoring System.

## Introduction and Evolution

The reliability of electrical power transmission systems largely depends on the timely detection and maintenance of faults in transmission lines.

Traditional inspection methods are labor-intensive, time-consuming, and often expose personnel to hazardous environments. To overcome these limitations, this project focuses on the development and implementation of drone-based transmission line inspection system.

The proposed system utilizes with high-resolution cameras and various sensors to capture real-time data and images of transmission line components such as conductors, insulators, and towers. The collected data are analyzed to identify defects like corrosion, cracks, vegetation encroachment, and loose fittings.

The use of drones significantly improves inspection efficiency, accuracy, and safety while reducing operational costs and downtime.

This project demonstrates how drone technology, combined with image processing can revolutionize power line monitoring and maintenance, ensuring a more reliable and sustainable power transmission network.

Transmission lines play a vital role in delivering electrical power from generating stations to consumers. Ensuring their reliability and safety requires regular inspection and maintenance to detect faults such as conductor damage, insulator failure, corrosion, and vegetation interference.

Power transmission line inspection represents one of the most critical yet challenging tasks in modern electrical infrastructure management. Traditionally, the inspection of transmission lines has relied on manual climbing, helicopter-based surveys, and ground-based methods. These conventional approaches suffer from significant limitations: they are labor-intensive, expose workers to considerable safety hazards, require substantial financial investment, and often provide limited operational flexibility. The conventional methods have remained largely unchanged for decades despite their inherent inefficiencies and risks to human operators. However, the convergence of unmanned aerial vehicle (UAV) technology, advances in high-resolution imaging, edge computing capabilities, and artificial intelligence has fundamentally transformed the landscape of transmission line inspection. Today, drone-based systems represent a paradigm shift toward safer, more efficient, and more comprehensive monitoring of electrical power infrastructure.

## Project Background

The demand for electricity has been increasing rapidly due to industrial growth and population expansion. As a result, the power transmission network has also expanded significantly. Maintaining such a large network requires regular inspection and monitoring.

In conventional systems, faults such as broken conductors, damaged insulators, and vegetation interference are detected manually. These methods are inefficient and may lead to delayed fault detection, resulting in power outages and economic losses.

Drone technology offers a modern alternative by enabling automated inspection. A drone equipped with cameras and sensors can fly along transmission lines and capture real-time data. This data can be analyzed to detect faults and ensure proper maintenance.

The integration of drones with image processing and artificial intelligence further enhances the system by enabling automatic fault detection. This reduces human intervention and increases efficiency.

Thus, drone-based inspection systems are becoming an essential part of modern power system maintenance.

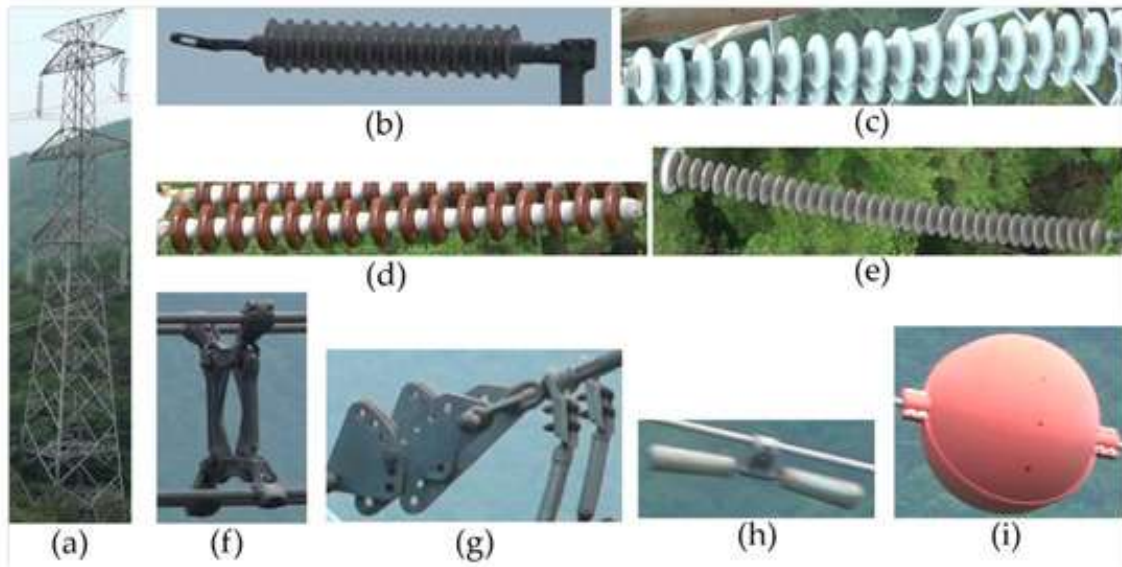
1. Unlike earlier studies that use handcraft features, this study explores the robustness of the CNN features and uses them for the task of multi-type HV transmission line components detection in a highly

cluttered environment.

2. Successful implementation of an embedded system for real-time processing of drone videos with CNN-based transmission line components detection framework. Unlike previous CNN-based transmission line component detection frameworks where the CNN-based detector is just focused to detect one type of insulator and GPU resources are left unused, this article successfully demonstrated the feasibility of using real-time transmission line component detector that is trained to detect nine different transmission line components with above 90% recall. Moreover, the CNN-based detector is optimized to fully utilize the GPU resources and exhibit real-time processing capabilities.
3. A light-weight and robust power line detection algorithm is also proposed in this paper.
4. A novel defect analysis method is proposed that can detect multiple defects in transmission line components, such as broken sheds in insulators, balisor fading, broken wires, rust in sag adjustors, splits in insulator, etc. Other than broken shed defects, these transmission line component defect analyzing methods have never been covered in previous studies.
5. A complete transmission line component inspection system is presented and its robustness and real-time performance are evaluated.

## PROPOSED SYSTEM

This section presents a detailed overview of the proposed system. [Figure 1.2.1](#) gives a brief introduction to familiarize the reader with the visual properties (i.e., shape, color, etc.) of the transmission line components discussed in this paper. The actual functionality of these components is beyond the scope of this paper. As shown in [Figure 1.2.](#), the proposed system can detect nine different types of transmission line components, having different colors, sizes, and shapes. It is worth mentioning that the proposed system is scalable (can detect more types of electrical components) and requires minor modifications in training and detecting routines.



**Figure 1.2.1** Example images of various types of transmission line components that can be detected by the proposed system. (a) Transmission tower; (b) lightning arrester (LA); (c) suspension-type—white porcelain insulator; (d) suspension type red porcelain insulator; (e) polymer insulator; (f) spacer; (g) sag adjuster with bolted tension clamp; (h) vibration damper; and (i) balisor.

The overall system diagram of the proposed transmission line components inspection system is shown in [Figure 1.2.2](#). Based on the implementation details, the inspection system is partitioned into two modules: (i) detection module and (ii) defect analysis module. The capturing and detection module is embedded on the Jetson TX2 board (does real-time processing), while the defect analysis module is implemented on the server machine (for offline processing).

### Navigation, Control, and Autonomous Flight Systems

Autonomous power line tracking represents one of the most technically challenging aspects of drone-based inspection systems. The integration of gimbal camera functionality with kinematic constraints of the QUAV platform enables stable tracking at consistent distances from power lines despite external disturbances. Nonlinear model predictive control (NMPC) methods have proven particularly effective for maintaining stable tracking in long-distance inspection areas while accounting for dynamic wind field variations. The controller formulates the QUAV's target tracking task as an optimization problem incorporating stringent motion attitude constraints, and through integration of gimbal camera functionality with a field-of-view (FOV) cost model, the system determines optimal tracking points while mitigating wind disturbance factors.

Vision-based autonomous flight systems employ end-to-end convolutional neural networks (CNN) to extract multilevel features and detect power lines with varying pixel widths and orientations. These systems group detected power lines according to morphological characteristics and construct 3D point sets based on binocular image epipolar constraints. Through real-time motion planning strategies, few-waypoint trajectories are generated, enabling automatic inspection without manual intervention. Position controllers utilizing integral sliding mode control (SMC) methods have demonstrated high accuracy and robust anti-interference capabilities, calculating lateral position deviation through microwave radar data combined with vision-based transmission line recognition algorithms such as MobileNetV3.

## Sensor Technologies and Data Acquisition

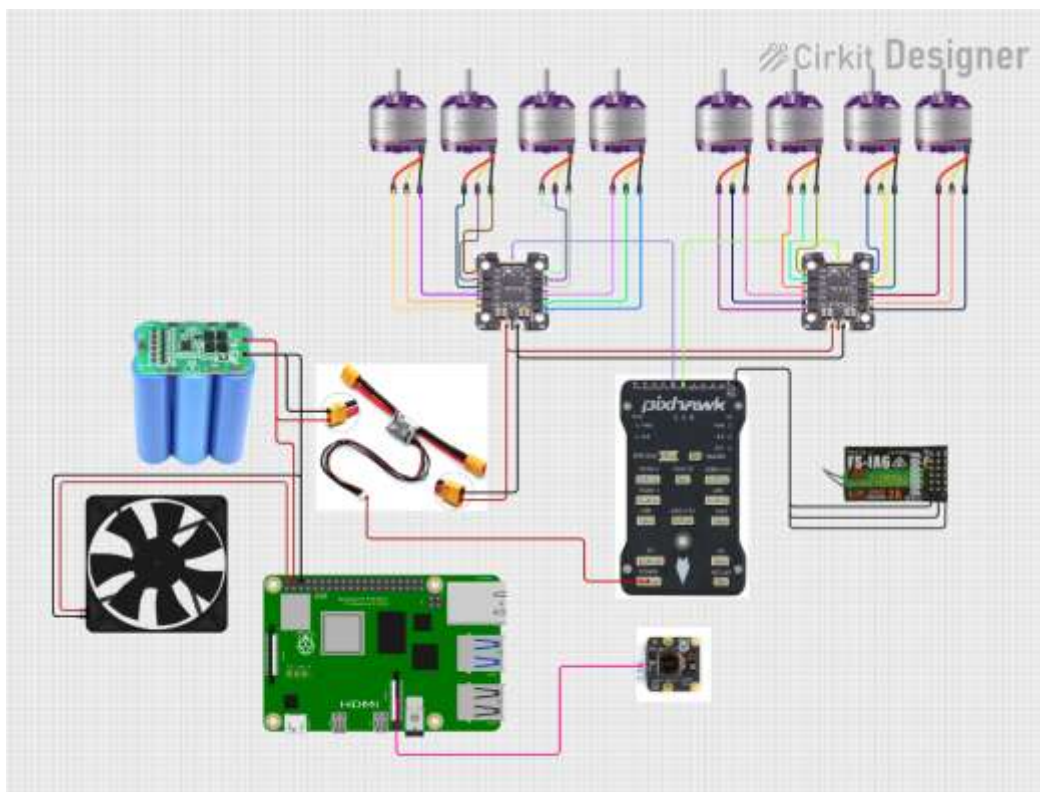
Drone-based transmission line inspection systems employ an increasingly sophisticated array of sensor technologies to capture comprehensive data about infrastructure condition. High-resolution RGB cameras mounted on drones capture detailed visual information of transmission components, while LiDAR (Light Detection and Ranging) technology has emerged as an important means of transmission line inspection due to its efficient and precise data acquisition capabilities. The integration of DJI L2 LiDAR systems with full-process automation technology (RPA, Robotic Process Automation) enables efficient automated processing frameworks for point cloud data, significantly improving data processing efficiency and modeling accuracy.

Thermal imaging represents another critical sensing modality, particularly for detecting overheating and other electrical faults that may not be visible through conventional visual inspection. The conversion of thermal energy measured by infrared cameras into accurate temperature readings requires systematic quantification of characteristic parameters including emissivity, transmissibility, and reflectability. Multi-source perception approaches construct three-dimensional digital mapping models of transmission lines, enabling real-time interconnection of virtual and real data. Thermal monitoring with infrared cameras deployed on UAVs has demonstrated the capability to overcome several bottlenecks in current technologies when properly implemented with automatic line-tracking methods to focus on transmission lines during patrol inspection.

Radar-based positioning systems, particularly millimeter-wave radar, provide accurate lateral position deviation measurement complementing vision-based detection systems. The integration of RTK (Real-Time Kinematic) high-precision positioning technology enables precise spatial coordinate information acquisition, with the help of modern drone platforms such as the DJI M4T. These multi-source sensor integrations provide comprehensive data for thorough condition assessment of transmission infrastructure.

## METHODOLOGY

### Block Diagram



## Working

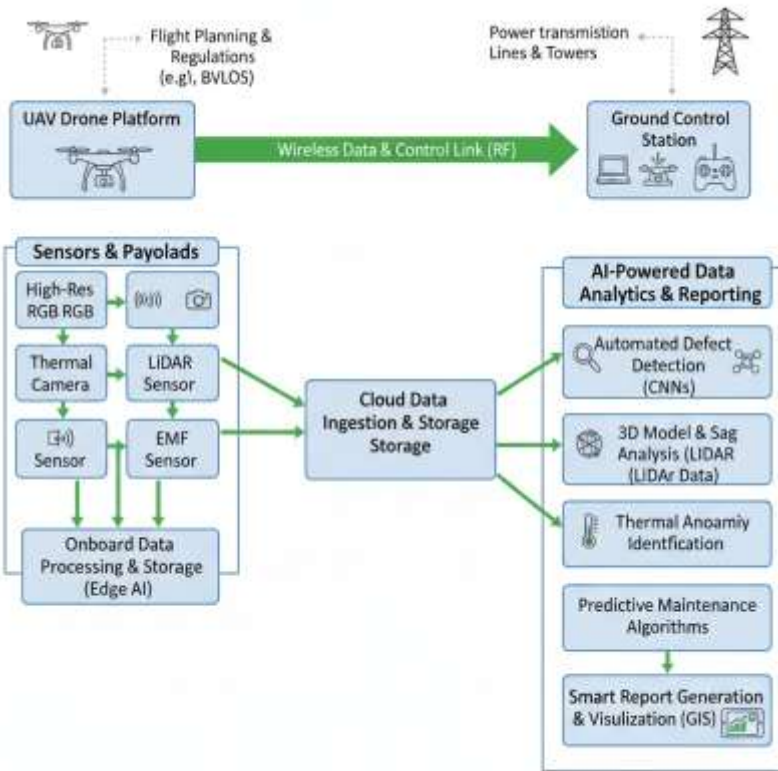
The working of the drone-based transmission line inspection system involves the integration of various components such as the flight controller, GPS module, transmitter-receiver system, camera module, and power supply. The system is designed to perform aerial inspection of transmission lines by capturing real-time data and identifying faults.

The drone operates either in manual mode using a transmitter or in semi-autonomous mode using pre-defined flight paths. The flight controller acts as the central unit that controls all operations of the drone. The drone system is powered using a **Li-Po battery** which provides the required voltage to all components. The power module converts and regulates the voltage to suitable levels for the flight controller and other electronic devices.

Proper power management ensures stable operation of the drone and prevents damage to components.

1. **Alternating Shutdown:** When load decreases below the reference, one transformer is shut down alternately to avoid thermal overloading and reduce unnecessary energy consumption.
2. **Priority-Based Load Cut-off:** If total load exceeds the capacity of both transformers, lower-priority loads are disconnected to ensure uninterrupted supply to critical loads.
3. **Monitoring & Display:** All operational parameters and load-sharing information are displayed in real time on an LCD for monitoring and analysis.

## Project Flow Chart



## HARDWARE

Sr. No.	Component	Example / Model	Specification	Function
1	Frame	F450 Quadcopter Frame	Lightweight, durable	Holds all drone components
2	Brushless Motor	A2212 1000KV (4x)	1000KV speed rating	Provides lift to drone
3	ESC (Electronic Controller)	Speed 30A ESC (4x)	30 Amp rating	Controls motor speed
4	Propellers	1045 (10x4.5 inch)	CW & CCW types	Generates thrust
5	Flight Controller	Pixhawk / KK2.1.5	Stabilization system	Controls drone movement
6	Battery	Li-Po Battery	3S, 2200mAh, 11.1V	Power supply
7	Power Distribution Board	PDB	Multi-output	Distributes power
8	GPS Module	NEO-6M GPS	Satellite positioning	Navigation & tracking

Sr. No.	Component	Example / Model	Specification	Function
9	Microcontroller / Processor	Raspberry Pi 4	Quad-core processor	AI processing & control
10	Normal Camera	Pi Camera / FPV Camera	HD video	Visual inspection
11	Thermal Sensor	MLX90640	32×24 resolution	Heat detection
12	Communication Module	Wi-Fi / RF Module	Wireless communication	Data transmission
13	Remote Control	FlySky FS-i6	2.4 GHz	Manual control
14	Sensors	Temperature, IMU	Various types	Monitoring conditions
15	Landing Gear	Standard landing gear	Shock resistant	Safe landing
16	Camera Mount	Gimbal / Holder	Adjustable	Holds camera & sensor

### Specific Defect Detection Capabilities

The ability to detect and classify specific transmission line defects represents a critical capability of drone-based inspection systems. Insulator defects constitute a major focus area, as insulators account for approximately 81.3% of transmission line interruptions. Mobile Net SSD (Single Shot Multibox Detector) algorithms enable precise detection of multiple insulator defect types, with systems trained on substantial datasets capable of classifying pollution flashover, corrosion, and breakage. YOLOv10-based detection methods have achieved remarkable precision (84.2%), recall (81.9%), and mAP50 (84.1%) scores through the integration of enhanced attention mechanisms and improved backbone architectures.

Conductor condition assessment through image-based analysis combined with deep neural networks enables detection of conductor degradation mechanisms including annealing, corrosion, and fretting fatigue. Defect localization and classification methods using thresholding and YOLOv7 algorithms, combined with convolutional neural networks for age-based classification, have demonstrated classification accuracy exceeding 98.5%. Thermal image analysis provides complementary validation and precise localization of corroded conductor areas according to heat dissipation patterns.

Vegetation encroachment monitoring represents an increasingly important application, as unauthorized vegetation can cause power outages and pose significant safety hazards. Deep learning-based segmentation approaches using DeepLabV3, U-Net, and modified U-Net architectures with VGG-16 weights effectively segment vegetation from background and power line corridors. Ensemble methods combining separate models for dominant class segmentation achieve IoU scores of 0.77 for vegetation-background discrimination and 0.64

for power line corridor segmentation, with intersection zones creating "encroachment" areas for targeted intervention.

Small object detection in complex UAV imagery benefits from improved YOLOv11-based methods incorporating density map prediction and segmentation modules. These approaches remove redundant background information while enhancing spatial feature extraction through dynamic receptive field attention mechanisms, significantly improving detection accuracy in complex backgrounds. Real-world tests in power line inspection scenarios confirm robust and efficient detection capabilities.

## Advanced Monitoring and Integrated Systems

Intelligent patrol systems based on collaboration between UAVs and edge computing platforms represent a new frontier in transmission line inspection. During autonomous flight, the UAV transmits real-time video streams to edge computing platforms, which locally perform line segmentation and fault detection with low-latency characteristics, enabling rapid response and high-precision inspection. Detection results are fed back to the UAV for dynamic route optimization while simultaneously uploading to background servers for data storage and subsequent analysis. This bidirectional result transmission enhances the UAV's adaptive cruising capability.

Digital twin technology integrated with drone inspection systems represents an innovative approach combining multi-source perception with 3D digital mapping models of transmission lines. Real-time interconnection of virtual and real data combined with improved YOLOv5-Mv3 deep learning algorithms enables automatic recognition and quantitative state assessment of fault images. The system architecture includes physical entity, perceptual transport, digital twin modeling, and visual decision layers, forming a "perception cognition decision" closed-loop mechanism. Field verification on 220kV lines demonstrated average defect recognition accuracy of 86.2% with inspection cycles shortened by 65%.

## Specialized Inspection Applications

Hybrid robotic systems combining rolling and flight modes have been developed to overcome in-line obstacles and pylons, common challenges in transmission line environments. The WireFlie system integrates underactuated arms mounted on drone platforms designed for secure, collision-free locking and detaching, enabling seamless transitions between locomotion modes. The system supports both single-arm and dual-arm rolling to bypass in-line obstacles such as Stockbridge dampers, dual spacers, and sleeves, while utilizing flight mode to overcome larger obstacles like pylons. Autonomous control systems enable locking, detaching, and obstacle avoidance through high-level controllers.

Bird nest detection on transmission towers represents a specialized safety application where UAVs equipped with deep learning technology enable autonomous flight, positioning, and photography. YOLOv5-s models optimized for edge deployment achieve mAP of 92.1% and frame rates of 33.9 FPS, with deployment on onboard computers during actual flight validation. This application dramatically improves accuracy compared to previous methods while reducing manual inspection workload.

Aerial manipulators for infrastructure maintenance have been experimentally validated on 15 kV power lines, investigating electromagnetic susceptibility of autopilot electronic components when manipulators approach or touch energized lines. These systems represent a promising direction for moving beyond inspection toward active maintenance tasks on transmission lines.

## Path Planning and Optimization

Transmission line inspection path optimization has become increasingly sophisticated with the integration of UAV and satellite cooperation. Algorithms that determine tower distribution and identify potential risk areas through large-scale satellite monitoring data enable UAVs to conduct targeted local detailed investigations. Task priority models based on historical fault data have been developed, and hybrid optimization algorithms combining genetic algorithms (GA) and ant colony optimization (ACO) with dynamic weight adjustment mechanisms balance conflicts among path length, energy consumption, and coverage.

Autonomous obstacle avoidance path planning for UAVs has been enhanced through deep reinforcement learning (DRL) combined with improved mayfly algorithms (IMA). These approaches overcome limitations of traditional swarm intelligence algorithms through Halton sequences, adaptive Gaussian-Cauchy mutation strategies, and deep deterministic policy gradient (DDPG) algorithms, enabling effective autonomous obstacle-avoidance path planning.

Speed scheduling optimization considering practical flight energy models has revealed that energy consumption relates to velocity in non-linear ways distinct from traditional distance-related or duration-related models. The "looking before crossing" (virtual rooms) algorithm represents an optimal approach to solve offline speed scheduling problems, with offline-inspired online heuristics demonstrating near-optimal performance for real-time scenarios.

## Operational Challenges and Solutions

Despite significant technological advances, drone-based transmission line inspection faces several operational challenges. Flight endurance limitations imposed by battery capacity represent a critical constraint affecting inspection duration and range. Innovative solutions including overhead power line energy harvesting techniques based on iron-core inductive coupling technology have been developed to directly charge drone batteries from the transmission lines themselves, with testing demonstrating reliable power supply when line current ranges from 200 to 500 amperes.

Wind disturbance represents another significant challenge, particularly in long-distance inspection areas where transmission lines traverse varied terrain with complex wind patterns. Electromagnetic interference (EMI) and challenges associated with flying near high-voltage transmission lines require careful consideration of implementation methods and safety protocols. A drone testbed prototype designed using commercial-off-the-shelf components based on PX4 controller and Ardupilot platforms has addressed some of these challenges through systematic testing and analysis of magnetic field patterns.

Safety and regulatory compliance represent important operational considerations. The absence of high-precision positioning systems in some inspection platforms highlights the need for versatile schemes applicable to various outdoor visual-based tracking scenarios. Mobile UAV hangar designs have been developed to integrate with existing power inspection vehicles, incorporating landing methods based on brightness recognition and achieving landing accuracy within required platform dimensions.

## Investment Decision-Making and Economic Considerations

The investment case for UAV-based transmission line inspection varies significantly depending on geographical and operational contexts. Economic analysis reveals that investing in UAVs for transmission line inspection is not uniformly advantageous across all scenarios. In plain areas where manual inspection efficiency is relatively high, investment may not be justified in the short term. However, after introducing UAV technology that significantly improves inspection efficiency, UAV inspection becomes a worthwhile investment. Economic models considering the impact of inspection mode on fault probability, fault compensation costs, and efficiency differences between UAV and manual inspections provide frameworks for evidence-based investment decisions.

## Thermal and Advanced Sensing Applications

Drone-based thermographic inspection has emerged as a promising method to enhance reliability and efficiency of high-voltage substations. Integration of drone-borne infrared thermography for preventive maintenance demonstrates substantial reductions in inspection time (1 hour versus 16 hours using manual thermography) with improved personnel safety and higher anomaly-detection accuracy. Infrared thermometer technology combined with multi-sensor cooperative detection enables temperature measurement of transmission line components with overall error rates as low as 0.3%, significantly reducing sensor measurement errors.

Binocular stereo vision systems have been developed for monitoring transmission line icing, a critical safety concern in certain climates. Automated ice thickness measurement obtained through 3D coordinate calculation of edge points and line fitting has been verified in both scene and experimental platform testing. Improved Canny edge detection combined with hybrid techniques has demonstrated superior performance compared to traditional methods for transmission line icing monitoring.

## Integration with Enterprise Systems and Data Management

Modern drone-based inspection systems increasingly integrate with enterprise Geographic Information Systems (GIS) for comprehensive asset management. Structured frameworks connect drone-based data acquisition with enterprise GIS platforms through interoperable architectures and real-time data pipelines, incorporating advanced analytics tools including artificial intelligence and machine learning for automated feature extraction, anomaly detection, and predictive maintenance modeling. Standardized data formats, metadata management, and system interoperability ensure compatibility with existing enterprise GIS infrastructures such as ArcGIS and QGIS.

Blockchain utilities for power transmission line inspection are being explored, illustrating next-generation data management possibilities, automating effective inspection, and providing solutions for current challenges in data integrity and provenance. These approaches support comprehensive integration of deep learning, navigation control concepts, and advanced sensors enabling UAVs to operate effectively across diverse implementation contexts.

## Future Directions and Emerging Technologies

- Expansion of regulatory frameworks will allow drones to fly hundreds of miles autonomously from a central hub, removing the need for a pilot to be physically present on site.

- Shifting AI processing from the cloud to the drone's onboard hardware will enable instant defect detection, allowing the drone to "double-back" and take closer photos if it spots a potential.
- Deployment of automated docking stations along the grid where drones can land, self charge (or swap batteries), and upload data without any human intervention.
- Development of drones that can "perch" on transmission lines or use induction technology to recharge directly from the electromagnetic field of the power line, enabling indefinite flight time.
- Utilizing 5G networks for ultra-low latency data transmission, allowing experts in a central office to view high-definition live feeds and control drones in real-time from anywhere in the world.
- Utilizing fleets of multiple drones working in coordination to inspect different parts of a tower or long stretches of line simultaneously, significantly reducing the total time required for large-scale surveys.
- Integration of hyperspectral imaging and advanced LiDAR to detect micro-fissures and internal material fatigue that are currently invisible to standard thermal and RGB cameras.
- Integration of drone data with Big Data analytics to not just find current breaks, but to predict exactly when a specific insulator or conductor will fail based on historical wear patterns.
- Future drones will use sophisticated Obstacle Detection and Avoidance (ODA) systems to safely navigate around thin shield wires and guy-wires, even in high winds.

## Conclusion

In this paper, an automatic transmission line component detection and defect analysis system is proposed. The proposed system can detect nine different types of transmission line components from videos taken by a drone using an embedded CNN-based components detector. The detection performance of the modified YOLO V3 approach is shown to outperform the performance of the baseline model. The system can also detect electrical power line using the proposed power line detection algorithm. The proposed power line detection algorithm shows superior performance on the given dataset as compared with the LSD and ED lines methods, both in terms of speed and accuracy. Once the power line components are detected, a defect analysis system checks for potential defects.

The performance of the proposed defect analyzers suggests that handcrafted, feature-based approach scan be used to detect some of the types of defects in situations where the availability of a large number of defect samples is not viable. the manual inspection counter part. The system pipeline presented in this work provides a natural guide to future research, which includes pushing existing CNN models to learn In order to support real-time operations, the proposed drone-based system is accelerated by an NVIDIA's Jetson TX2 GPU and uses OpenCV, CUDA, and libraries along with Darknet's CNN framework. The proposed system is tested on a large, unbiased, unconstrained evaluation dataset of transmission line components images. he proposed automatic inspection system provides practical solutions to meet the major requirements of the modern electric transmission system.

The feasibility of using a drone along with a robust real-time CNN-based object detector can eliminate the danger associated with the duties of electric workers physically climbing transmission towers on regular basis or use of expensive patrolling helicopters to inspect the conditions of transmission line components. The proposed defect analysis system can also help in reducing the time to identify the faulty components. The

proposed balisor fading defect detector has a 100% recall rate which means it does not miss any faulty components, while the 76% precision rate means that only 24% of the detection can be a false alarm. Hence, even if the second round of inspection is required, the proposed inspection system can save up to 76% of the manual inspection work. Overall, the proposed inspection system not only offers ease of implementation and scalability but also gives an economical advantage over