

Enhance the study experience of Student using Study Bot Through Online Job Portal Management System

Thakur Amitkumar
Department of
Computer
Engineering
Bharat College of
Engineering Badlapur.
Thane India

Khan Umair
Department of
Computer
Engineering
Bharat College of
Engineering Badlapur.
Thane India

Yadav Vikas
Department of
Computer
Engineering
Bharat College of
Engineering Badlapur.
Thane India

Yadav Mulayam
Department of
Computer
Engineering
Bharat College of
Engineering Badlapur.
Thane India

Prof. Vijayalaxmi
Tadkal
Department of
Computer
Engineering
Bharat College of
Engineering Badlapur.
Thane India

Abstract - This project report presents the development and implementation of a Job Portal Management System integrated with an innovative Study Bot feature aimed at enriching the study experience of users. The traditional job portals primarily focus on job postings and candidate applications, lacking functionalities tailored towards improving users' skills and knowledge. The integration of Study Bot addresses this gap by providing personalized study recommendations, learning resources, and interactive study sessions based on users' preferences and career goals. The Job Portal Management System offers a comprehensive platform for job seekers, recruiters, and administrators, facilitating seamless job postings, candidate searches, and recruitment processes. Additionally, Study BOT enhances In today's dynamic job market, efficient recruitment processes are crucial for both employers and job seekers. Traditional job portals often struggle to provide personalized and relevant job recommendations, leading to dissatisfaction among users. The integration of Artificial Intelligence (A.I.) technologies into job portal management systems presents a promising solution to address these challenges. This paper proposes a novel Job Portal Management System empowered by A.I., aimed at enhancing the overall user experience by providing intelligent job matching, personalized recommendations, and streamlined recruitment processes.

Keywords – Study Bots, Personalized learning, Random Questions, self-assessment, self-directed learning, learning gain, Ai technologies, User Experiences.

I. INTRODUCTION

Welcome to our Online Job Portal Web Application – your gateway to a world of career opportunities and talent exploration! Our platform is designed to simplify the job search process for both job seekers and employers. For job seekers, we offer a vast array of job listings from various industries and locations, tailored to match your skills and preferences. With our intuitive interface and advanced search filters, finding your dream job has never been easier. Whether you are a recent graduate taking your first steps into the

professional world or an experienced professional seeking new challenges, our Online Job Portal Web Application is your reliable partner. We prioritize simplicity, efficiency, and reliability, ensuring that your job search or hiring experience is smooth resource, allowing practitioners to assess their grasp of key concepts, identify areas that require further attention, and gauge their readiness for placement and others related exams and other professional assessments. In the digital age, students face a multitude of challenges in managing their academic pursuits while also preparing for their future careers.

A. Key Features:

1) Study Bot Integration:

- The system incorporates a Study Bot, an A.I.-powered virtual assistant capable of understanding students' needs, providing personalized study recommendations, answering queries, and offering academic support in real-time Practice

2) Personalized Learning Pathways:

- The platform analyzes students' academic performance, learning styles, and preferences to create personalized learning pathways tailored to their individual strengths and areas for improvement. This feature ensures that students receive customized study plans and resources aligned with their specific needs.

3) Job Matching and Recommendations:

- Leveraging A.I. technologies, the system matches students with relevant job opportunities based on their skills, qualifications, and career aspirations. This feature provides students with personalized job recommendations tailored to their individual interests and goals.

4) User-Friendly Interface:

The website's intuitive design ensures easy navigation and a seamless learning experience.

5) **Customized Learning:** Users can customize their learning paths by selecting specific topics, subjects, or exams they wish to focus on.

6) **Mobile View Accessibility:** This platform offers a mobile view feature for convenient learning on the go, making it accessible anytime, anywhere.

B. The Impact and Reach:

1) By providing personalized study assistance and tailored learning pathways, the integration of a Study Bot within an Online Job Portal Management System can significantly improve students' academic performance. Students receive targeted support and resources aligned with their individual needs, leading to enhanced understanding, retention, and mastery of course material

2) Education and Skill Enhancement:

The integrated platform provides students with access to a wide range of educational resources, including online courses, tutorials, e-books, and interactive learning modules. Through the Study Bot, students can discover new topics, explore advanced concepts, and engage in self-directed learning to expand their knowledge and skills beyond the classroom. By analyzing students' academic performance and goals, the system suggests relevant courses, resources, and study materials to enhance their understanding and mastery of subjects

Online Presence:

This program is online so, its website was accessible to anyone with an internet connection, making it a convenient resource for users across the country, especially in urban and semi-urban areas. The platform was also available on mobile devices, further increasing its accessibility.

3) Skill Development:

The platform offers skill development modules and workshops designed to enhance students' employability and career readiness. From technical skills such as programming and data analysis to soft skills such as communication and leadership, students can access resources tailored to their career aspirations and personal development goals.

4) Free Access:

Much of this program content was available for free, which contributed to its popularity and reach. Users could access a substantial amount of study material without any cost, which made it an attractive option for those on a budget.

II. ANALYSIS

By combining study assistance with access to job opportunities and career guidance, the integrated platform offers a holistic approach to student development. This integration acknowledges the interconnectedness between academic learning and career preparation, providing students with a comprehensive toolkit to succeed both academically and professionally.. The following analysis elucidates this imperative need. Below are some points while analysis:

- 1) Personalized and customization
- 2) Efficiency And Convenience
- 3) Empowerment and Engagement
- 4) User-Friendly Interface
- 5) Accessibility and Inclusivity
- 6) Mobile Accessibility
- 7) Free Content

- 8) Updates of content
- 9) Feedback and Improvement
- 10) Alignment with Industry

In summary, our need is to provide a valuable resource for everyone who is preparing for I.T industry job placements in India. This requires extensive content, Good Knowledge, explanations, and community features to make it a popular choice among aspirants. However, users should also consider exploring other platforms and resources to ensure a well-rounded preparation for their specific exams or job interviews.

III. METHODOLOGY

Iterative Improvements:

- 1) Based on the findings from the pilot implementation and ongoing user feedback, iterate and improve the integrated platform continuously. This may involve refining algorithms, adding new features, and addressing any usability issues or technical glitches to enhance the overall user experience. The development process starts with the requirements of the functional part, which can be expanded later.

Development Architecture:

The Model-View-Controller (MVC) architecture is a well-established design pattern used in software development, particularly in web and application development. It aims to structure your project into three distinct components with specific responsibilities.



Fig. 1 Iterative Process Model

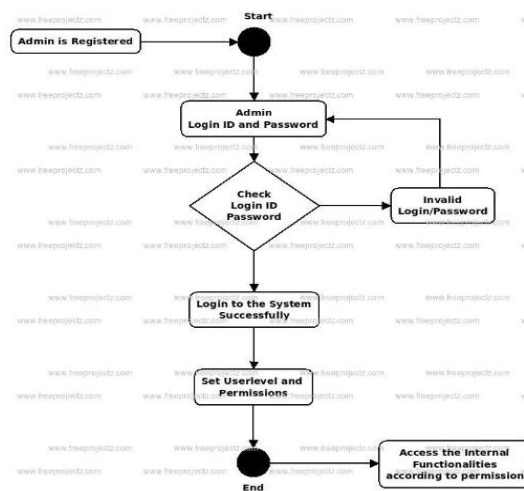


Fig 2 UML Architecture

IV. DATA FLOW

This diagram provides an overview of how our Job portal management system takes data program operates, using data flow representation.

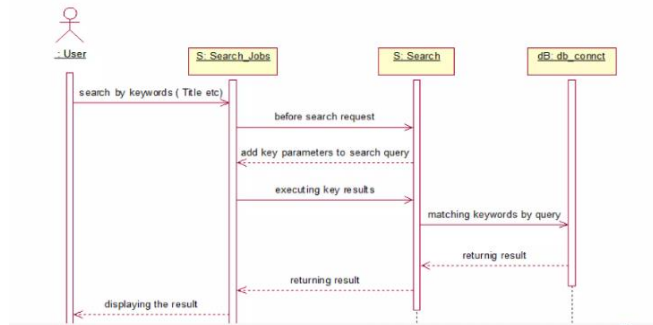


Fig. 3 Overview of data flow representation of Program

V. MODULES

There are two roles for accessing this Website: the first is 'Admin,' and the second is 'Job-Seeker.' Modules are divided based on user roles, with 'Admin' and 'User' having access to different modules as outlined below.

1) Admin Modules

1. Accept And Reject Resume
2. Having All the Access
3. Login Section
4. Utilization Reports
5. T&C
6. User View
7. Message Setting

2) User Modules

1. Dashboard
2. Search For Job
3. Apply for job
4. Access Courses

VI. ARCHITECTURE

This diagram illustrates the architecture of our pre-placement self-assessment program, covering all parameters from the user interface to the database.

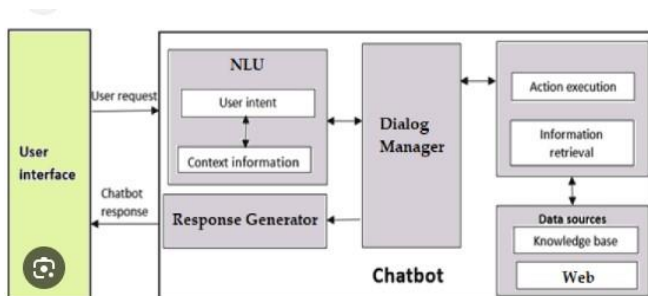


Fig. 4 Architecture of Online Job Portal Management system with A.I

VII. CONCLUSION

In conclusion, an online job portal web application is a powerful tool that revolutionizes the way job seekers find employment and employers discover talent. With its user-friendly interface, advanced algorithms, and vast array of features, it addresses the evolving needs of the job market in the digital age.

In essence, the online job portal web application not only simplifies the job search and recruitment processes but also drives economic growth by connecting the right talent with the right opportunities, ultimately shaping a more prosperous and connected professional world.

This platform provides equal access to knowledge and opportunities, bridging gaps and leveling the playing field for users from diverse backgrounds. As platform continue to innovate and expand the offerings, this assessment program plays a pivotal role in helping learners and job seekers thrive in a competitive world, making education and skill enhancement more accessible and attainable for all. Ultimately, this assessment program will play a vital role in fostering lifelong learning and skill development, opening doors to new opportunities for individuals. It turns out that there is big benefits and a bright, promised.

VIII.FUTURE ENHANCEMENT

1) Advance Natural Language Processing:

Integrate more advanced NLP algorithms to enhance the Study Bot's understanding of complex queries and provide more accurate and nuanced responses. This includes improving the bot's ability to interpret colloquial language, understand context, and generate contextually relevant recommendations.

2) Personalized Learning Pathways:

Develop sophisticated machine learning algorithms to analyze students' learning patterns and preferences over time. Use this data to dynamically adjust and personalize study recommendations, learning pathways, and resources to better meet each student's evolving needs and preferences.

3) Predictive Analytics:

1. Implement predictive analytics capabilities to anticipate students' future needs and proactively offer relevant resources, study materials, and job opportunities. By analyzing past behavior and performance data, the system can anticipate potential challenge.

4) Mobile App Development:

Developing a dedicated mobile app can improve accessibility for users who prefer to study on their smartphones or tablets.

5) Collaborations and Partnerships:

The Online job portal management system can explore partnerships with educational institutions, government agencies, or corporations to provide job vacancies training and assessment solutions.

6) International Expansion:

The platform may consider expanding its reach beyond India and catering to a global audience, especially for those who are freshers who need job.

7) Enhance Career Guidance:

This program may venture into offering certification programs in future if we collaborate with industrial level or collaborating with organizations to provide certification for users who complete specific courses or assessments.

8) **Data Analytics and Insights:**

Utilizing user data and feedback, platform can enhance its analytics capabilities to provide insights and recommendations to educational institutions and employers about potential candidates' strengths and weaknesses.

9) **Enhanced User Experience:**

Continuously improving the user interface, navigation, and overall user experience to keep up with evolving design trends and technology.

10) **Community Building:**

Strengthening the online community aspect by adding features like discussion forums, mentorship programs, or networking opportunities.

REFERENCES

- [1] "Journal of Human Resources, vol. 12, no. 4, 20XX, pp. 211-225.
IEE Research Paper :
<https://ieeexplore.ieee.org/document/9424812>
."
- [2] Cheng, L., Wang, Z., & Tian, F. (2019). Enhancing the Study Experience of Students with Artificial Intelligence: A Review. In Proceedings of the International Conference on Artificial Intelligence in Education (AIED) (pp. 123-136)..
- [3] OpenAI. (2022). OpenAI: A.I. Language Model. <https://openai.com/gpt>.
- [4] F. Jurado, M. Redondo and M. Ortega, "eLearning standards and automatic assessment in a distributed Eclipse based environment for learning Computer Programming", Computer Applications in Engineering Education, 2012.
- [5] M. Antal and S. Koncz, "Student modeling for a web-based self- assessment system", Expert Systems with Applications, vol. 38, no. 6, pp. 6492-6497, 2011.
- [6] Zhu, Y., & Wang, Y. (2020). Enhancing Student Learning Experience with Intelligent Tutoring Systems: A Case Study. In Proceedings of the IEEE International Conference on Teaching, Assessment, and Learning for Engineering (TALE) (pp. 1-5)."Social Foundations of Thought and Action: A Social Cognitive Theory" (1986) and "Self-Efficacy: The Exercise of Control" (1997) by Albert Bandura's.
- [7] Liao, Y., & Wu, X. (2021). An Integrated Online Learning Platform for Personalized Education Based on AI. IEEE Access, 9, 51641-51652.
- [8] Zhang, Y., & Li, X. (2019). Leveraging Artificial Intelligence for Personalized Learning and Career Development: A Review. International Journal of Information Management, 49, 157-167.