

Enhancing Care and Communication for Paralyzed Patients Using Gestures and GSM Integration

Mr. P. Srinivasulu¹, N. Kavya Sree², Ch. Kavya³, B. Lakshmi Prasanna⁴, R. Navya⁵

¹Assistant Professor, Dept. Of ECE, PBR VITS, Kavali, Nellore District, Andhra Pradesh, India

²⁻⁵UG Students, Dept. Of ECE, PBR VITS, Kavali, Nellore District, Andhra Pradesh, India

Abstract - This paper presents a system designed to enhance communication and healthcare monitoring for paralyzed patients. Patients suffering from paralysis often face difficulty in expressing their needs due to limited movement and speech impairment. The proposed system integrates gesture recognition with real-time health monitoring to address this issue. A USB web camera is used to detect hand gestures, which are processed using a microcontroller. Additionally, vital parameters such as heart rate and body temperature are continuously monitored. In case of emergency gestures or abnormal health conditions, a GSM module sends instant alerts to caregivers. The system also includes an LCD display and buzzer for local notifications. This integrated approach improves patient safety, independence, and ensures timely medical assistance.

Key Words: Gesture Recognition, GSM Communication, Arduino, Health Monitoring, Patient Care Automation

1. INTRODUCTION

Paralyzed patients often face serious difficulties in communicating their needs due to limited physical movement and inability to speak clearly. This communication gap can lead to delays in assistance and may affect patient safety.

To overcome this issue, the proposed system provides a simple and reliable solution that enables patients to communicate using hand gestures. The system integrates gesture recognition, health monitoring, and GSM communication to ensure effective interaction between patients and caregivers. It is designed to be cost-effective, easy to use, and suitable for both hospital and home environments.

In recent years, advancements in embedded systems and Internet of Things (IoT) technologies have enabled the development of smart healthcare solutions. These technologies allow continuous monitoring of patient health and real-time communication between patients and caregivers. By integrating sensors,

microcontrollers, and communication modules, healthcare systems can become more efficient, responsive, and reliable. The proposed system leverages these technologies to create an intelligent solution that not only assists in communication but also ensures timely medical support, thereby improving the overall quality of patient care.

2. LITERATURE SURVEY

Several research works have been carried out to assist paralyzed and physically challenged patients using modern technologies such as gesture recognition, IoT, and health monitoring systems. Earlier systems mainly focused on enabling communication through hand gestures using sensors or camera-based techniques. These systems helped patients convey basic needs, but they were often limited to communication only and did not include health monitoring features.

In addition, various IoT-based healthcare systems have been developed to monitor vital parameters such as heart rate, body temperature, and oxygen levels. These systems allow remote monitoring of patients and provide real-time data to caregivers or doctors. However, most of these solutions focus only on health tracking and lack an effective communication mechanism for patients who are unable to speak.

Some integrated systems have attempted to combine both communication and monitoring, but they often involve complex hardware, high costs, or require continuous supervision. Moreover, reliability and real-time alert mechanisms are still challenges in many existing designs.

To overcome these limitations, the proposed system integrates gesture recognition, real-time health monitoring, and GSM communication into a single platform. This approach ensures both effective communication and timely medical assistance, making it

more suitable for practical healthcare applications, especially for paralyzed patients.

3. EXISTING SYSTEM

Existing systems for paralyzed patient assistance mainly focus on either **gesture-based communication** or **health monitoring** separately. Gesture-based systems use sensors or cameras to detect hand movements, allowing patients to convey basic needs. On the other hand, health monitoring systems track vital parameters such as heart rate and temperature using IoT devices. However, these systems often lack integration, real-time emergency alerts, and require continuous supervision. As a result, they are less efficient in providing complete and reliable patient care.

4. PROPOSED SYSTEM

The proposed system is designed to provide an integrated solution for communication and health monitoring of paralyzed patients using gesture recognition and GSM communication. The system combines multiple hardware components such as sensors, microcontroller, communication modules, and output devices to ensure efficient and reliable operation.

In this system, a gesture recognition mechanism is implemented using a sensor or camera to detect the hand movements of the patient. Each gesture is predefined and mapped to a specific message such as requesting help, water, or medical assistance. The captured gesture data is processed by the microcontroller, which interprets the signal and generates the corresponding output.

Simultaneously, the system continuously monitors the patient's vital parameters using sensors such as a heart rate sensor and a temperature sensor. These sensors collect real-time data and send it to the Arduino controller. The controller compares the sensor values with predefined threshold levels to determine whether the

patient's condition is normal or abnormal.

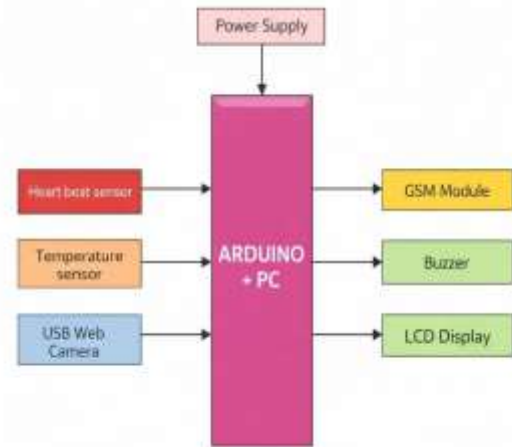


Fig 4.1: Block Diagram of Proposed System

When a gesture is detected, the system displays the corresponding message on the LCD screen and can also trigger a buzzer for local indication. In case of abnormal health conditions or emergency gestures, the system activates the GSM module, which sends an alert message to caregivers or family members. This ensures immediate response and timely medical assistance.

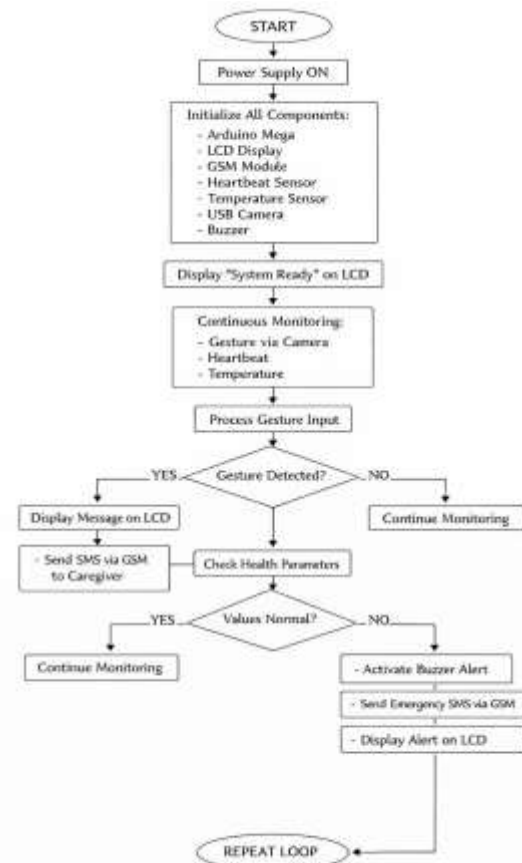


Fig 4.2: Flow Chart of the Proposed System

The overall system works in a synchronized manner where data acquisition, processing, and communication occur in real time. The integration of gesture-based communication with health monitoring and GSM alerts makes the system efficient, user-friendly, and suitable for both home and hospital environments.

This methodology not only enhances patient independence but also reduces the workload on caregivers by automating communication and monitoring processes.

To further enhance the system performance, proper calibration and synchronization of all sensors are maintained to ensure accurate data acquisition and reliable operation. The system is designed to function continuously with minimal human intervention, making it highly suitable for real-time healthcare applications. Its modular structure allows easy expansion and integration of additional features such as more advanced sensors or IoT-based remote monitoring in the future. This flexibility makes the system adaptable to different patient conditions and healthcare environments, thereby increasing its practicality and effectiveness in providing improved patient care.

ADVANTAGES

- Communication
- Monitoring
- Safety
- Cost-Effective
- Automation

APPLICATIONS

- Hospitals
- Healthcare
- Rehabilitation
- Homecare
- Disability-support

5. RESULTS AND DISCUSSIONS

The proposed system was successfully designed and implemented to enhance communication and healthcare monitoring for paralyzed patients. The integration of gesture recognition, vital parameter monitoring, and GSM communication was tested under various conditions to evaluate the performance and reliability of the system. The results demonstrate that the system is capable of accurately detecting predefined hand gestures and converting them into meaningful messages, which are displayed on the LCD screen. This enables effective communication for patients who are unable to speak.

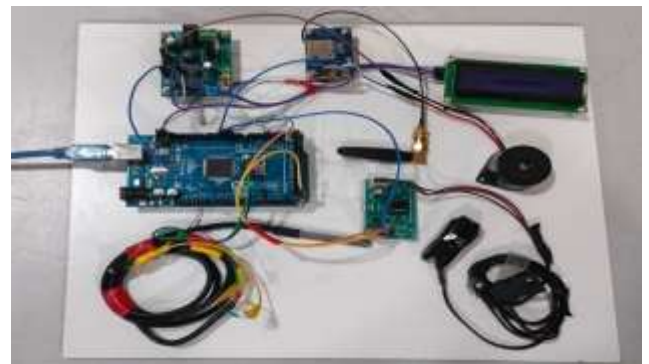


Fig. 5.1: Before running the project

The health monitoring module was also tested for continuous measurement of vital parameters such as heart rate and body temperature. The sensors provided consistent and reliable readings under normal conditions. When the measured values exceeded the predefined threshold limits, the system successfully identified the abnormal condition and triggered the alert mechanism. The buzzer was activated immediately to provide a local warning, and the GSM module sent an SMS notification to the registered caregiver without significant delay. This confirms the system's ability to respond quickly during emergency situations.

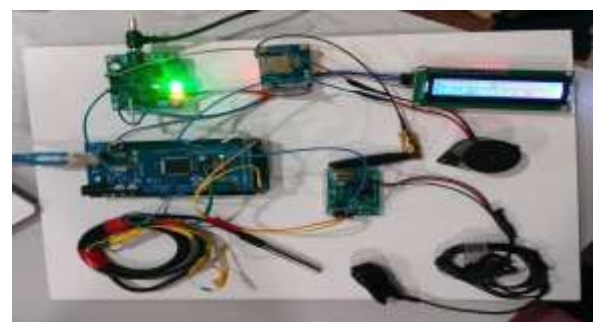


Fig. 5.2: After running the project

When the patient performs a hand gesture, the gesture sensor detects the movement and sends the data

to the Arduino controller. Based on the predefined mapping, the system interprets the gesture and displays the corresponding message such as “Help”, “Food” or “Pain” on the LCD screen. This enables the patient to communicate basic needs effectively without verbal interaction as shown in the fig. 5.3.



Fig. 5.3: Gesture detecting using USB camera

If an abnormal health condition is detected or an emergency gesture is performed, the system activates the buzzer for local alert and triggers the GSM module. The GSM module sends an SMS notification to the caregiver or family member, ensuring immediate attention. The LCD display simultaneously shows the alert message, providing both local and remote indication.



Fig. 5.4: Output of the gesture detected

The experimental results demonstrate that the proposed system effectively integrates gesture-based communication and real-time health monitoring. The system operates reliably in detecting gestures, monitoring vital parameters, and sending timely alerts through GSM communication. This approach significantly improves patient safety, reduces caregiver workload, and enhances the overall efficiency of healthcare support for paralyzed patients.

6. CONCLUSION AND FUTURESCOPE

The proposed system successfully demonstrates an effective solution for improving communication and healthcare monitoring for paralyzed patients. By integrating gesture recognition, vital sign monitoring, and GSM-based communication, the system enables patients to express their needs without speech while ensuring continuous health supervision. The implementation shows reliable performance in detecting gestures, monitoring parameters such as heart rate and temperature, and generating timely alerts in emergency situations. This integration reduces caregiver dependency, enhances patient safety, and provides a cost-effective and user-friendly approach suitable for both home and hospital environments.

In the future, the system can be further enhanced by incorporating advanced technologies such as artificial intelligence and machine learning for predictive health analysis and improved gesture recognition accuracy. Additional sensors like blood pressure and oxygen level monitors can be integrated to provide comprehensive health tracking. Development of a dedicated mobile application and cloud-based data storage can enable better remote monitoring and data analysis. Furthermore, advanced communication techniques such as brain-computer interfaces can be explored to support completely immobile patients, making the system more scalable, intelligent, and suitable for real-world healthcare applications.

REFERENCES

- [1]Jambagi A. S., Hegde D. V., et al. Hand Gesture Recognition for Paralyzed. Perspectives in Communications, Embedded Systems and Signal Processing; 2020.
- [2]Parra-Dominguez G. S., Sanchez-Yanez R. E., Garcia-Capulin C. H. Facial Gesture Recognition in Patients with Facial Paralysis. Healthcare Journal; 2022.
- [3]Kulkarni M., Sanap D., Shivpuie D. B. Automated Paralysis Patients Healthcare System. International Journal for Research in Applied Science and Engineering Technology; 2023.
- [4]Selvaraju G., Haziqah H. Development of IoT-Based Paralysis Healthcare with Hand Gesture Recognition using ESP32. University Technical Malaysia Melaka; 2024.
- [5]Nandhakumar K., Vadivel R. Study on IoT-Based Automated Paralysis. Patient Healthcare System. World Journal of Advanced Research and Reviews; 2025.