

HOSTEL MANAGEMENT SYSTEM

TASNEEM TABASSUM ,

Guide: Mrs. Apoorva Rai , Mrs. Aakanksha Dholey

Department of Computer Science Engineering

ANNIE INSTITUTE OF TECHNOLOGY & RESEARCH CENTRE, CHHINDWARA (MP)

ABSTRACT

We need to have managing all module or activity of the Hostel in the centralized system that is called Hostel management system , it is possible by the application the Hostel Management System is very use full to maintain and control of other activity and modules of a libraries , we have to build our project to interact with computer via Hostel management application through Vb.net and Ms Access .

We naturally hence to increase the power of managing and firstly executed and maintaining records of an students date by date, the Hostel management system is help you to controlling all type of activity which is related to Hostel, in other words we can say my project is providing complete packaged to manage any type of Hostel.

INTRODUCTION

Windows Application:

Windows application is mainly developed for the windows platform, which issued to doing work on the windows OS, and doing any work by the help of windows os, windows application is running on the any version of windows 7,8,10 etc.

Vb.Net:

Vb.Net is mainly use to doing programming on the Windows; Vb.Net is mainly use to create a windows application an all types of application for various types of platform..

Ms Access:

Microsoft Access is a database management system (DBMS) from Microsoft that combines the relational Microsoft Database Engine with a graphical user interface and software-development tools.

GUI:

GUI (Graphical User Interface) it is a graphical interface of the windows application, which is interact with the user.

Project/ problem selection

Important of hostel management system of hostel :

A good Hostel management system should enable Warden to manage Hostel resources in a more effective way to save time and effort.

Hostel Management System Hostel management by manual way is tedious process, since it involves work load and time consumption. In this system, we can easily manage the hostel details, room details, student records, mess expenditure, mess bill calculation, easy way of room allocation and hostel attendance. Thus, there are a lot of repetition can be easily evaded which has reduced the data redundancy.

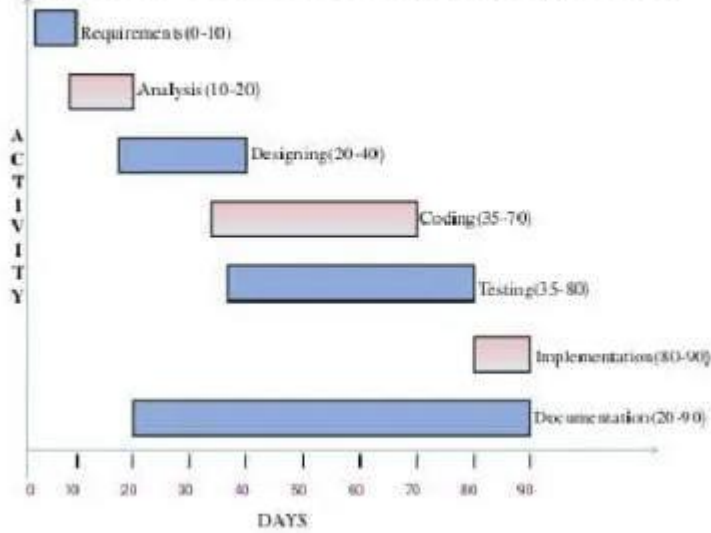
Now days the systems developed on open source so we can access these systems easily from anywhere & anytime and easy to navigate. These Systems helps to warden to.

PROJECT MONITORING SYSTEM

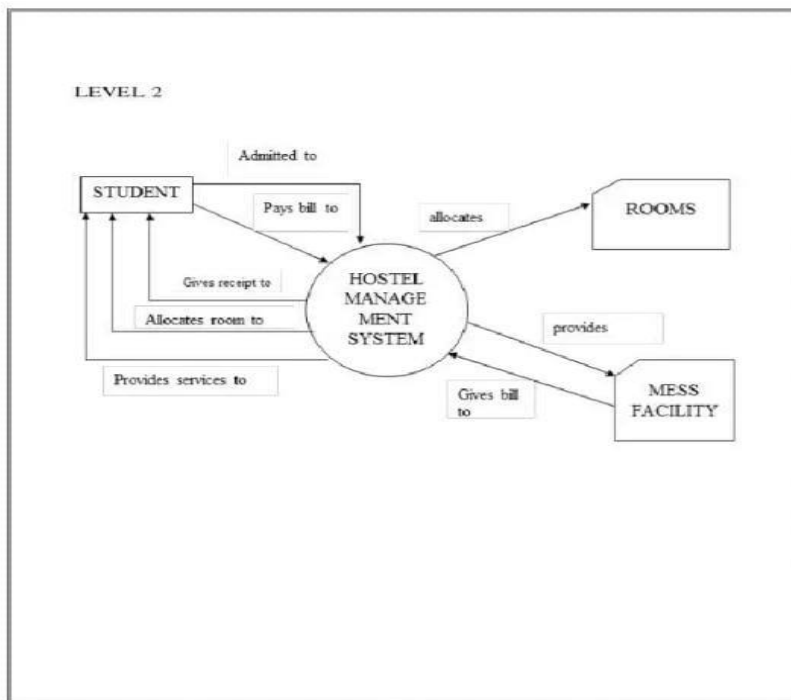
Project Monitoring System is a tool to monitor the physical and financial progress under Integrated RMSA, the system will capture the activity wise monthly progress at State level. State can also view the releases issued by the GOI under different schemes. In the PMS, the activity wise and year wise approved components i.e. RMSA, ICT, IEDSS, GH and VE under Non-recurring and Recurring heads are also available in the system.

4.1 Gant Chart:

Time line chart (Gantt chart) HMS



4.2 pert charts:



Project monitoring system

5.1 Feasibility study

Financial study:

The Hostel management system has strong system for managing all types of activity of the Hostel and its implementation is vary easy and very easy to use and no need to get training for operate our project, every beginners are easily use and operate it. Our project is powerful but it's run only windows OS.

Behaviors:

Our project behavior is very simple and easy that's control by the two types of module

1: Login Module,

2: Warden Module.

An Admin can Add or Remove Student, Allot Rooms.

Physical:

We have use the Vb.net language to controlling every module and activity. Now we have managing our Hostel on windows based application that is Hostel management system. We also hence increasing the power of managing and storing data in the system

SYSTEM ANALYSIS

6.1 Requirement Specification:

1. Dot Net Framework 4.

02. Editor

3. Windows OS any Version.

4.Ms access.

1. Vb.Net:

Visual Basic .NET (VB.NET) is a multi-paradigm, object-oriented programming language, implemented on the .NET Framework, Microsoft launched VB.NET in 2002 as the successor to the original Visual Basic language. Although the ".NET" portion of the name was dropped in 2005, this article uses "Visual Basic [.NET]" to refer to all Visual Basic languages released since 2002, in order to distinguish between them and the classic Visual Basic. Along with Visual one of the main languages targeting the .NET framework. Microsoft's integrated development environment (IDE) for developing in Visual Basic .NET language is Visual Studio. Most Visual Studio editions are commercial. the only exceptions are Visual Studio Express and Visual Studio Community which are freeware. In addition, the .NET Framework SDK includes a freeware command-line compiler called vbc.exe. Manuals include a command-line VB.NET compiler.

MS Access:

Microsoft Access is a database management system (DBMS) from Microsoft that combines the relational Microsoft Jet Database Engine with a graphical user interface and software-development tools. It is a member of the Microsoft Office suite of applications, included in the Professional and higher editions or sold separately. Microsoft Access stores data in its own format based on the Access Jet Database Engine. It can also import or link directly to data stored in other applications and databases.

Software developer's data architects and power users can use Microsoft Access to develop application software like other Microsoft Office applications, Access is supported by Visual Basic for Applications (VBA), an object-based programming language that can reference a variety of objects including DAO (Data Access Objects), ActiveX Data Objects, and many other ActiveX components. Visual objects used in forms and reports expose their methods and properties in the VBA programming environment, and VBA code modules may declare and call Windows operating system operations.

6.2 System Flow Chart

Objective/ Vision

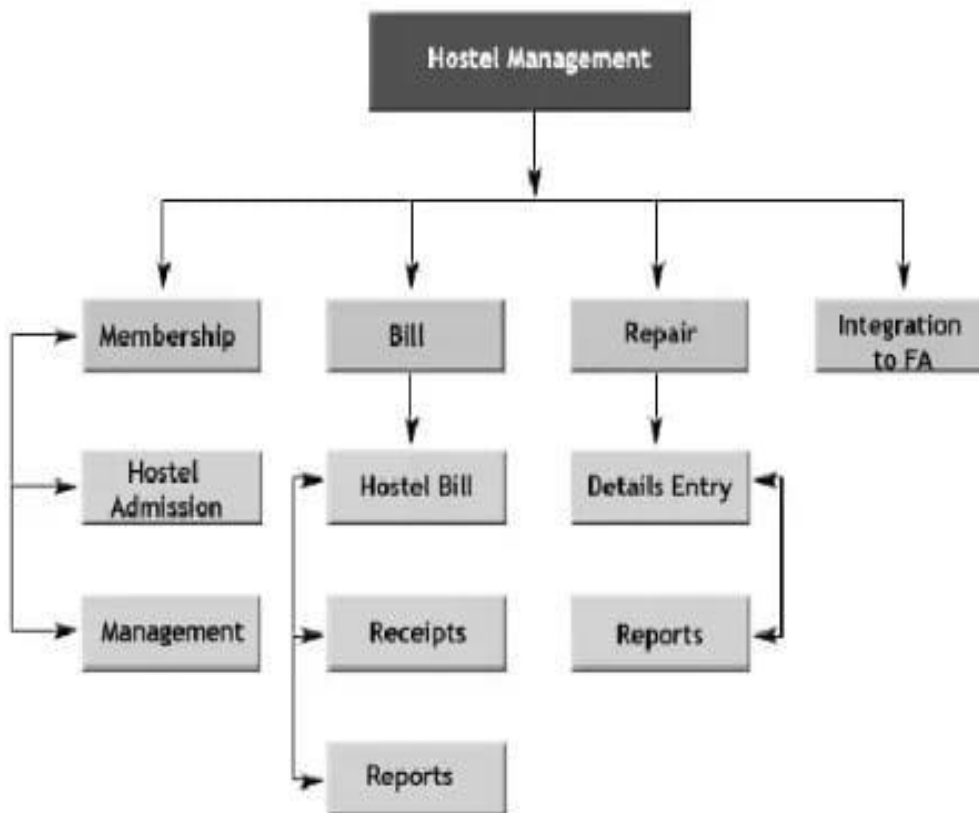
Hostel management software where admin can add/view/delete And Allot Rooms To Students .

Users of the System

1. Admin

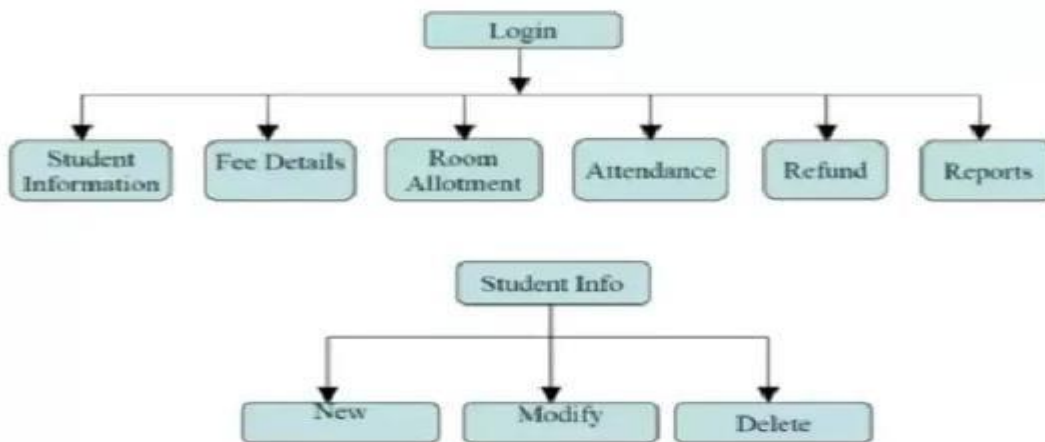
Functional Requirements

1. Warden



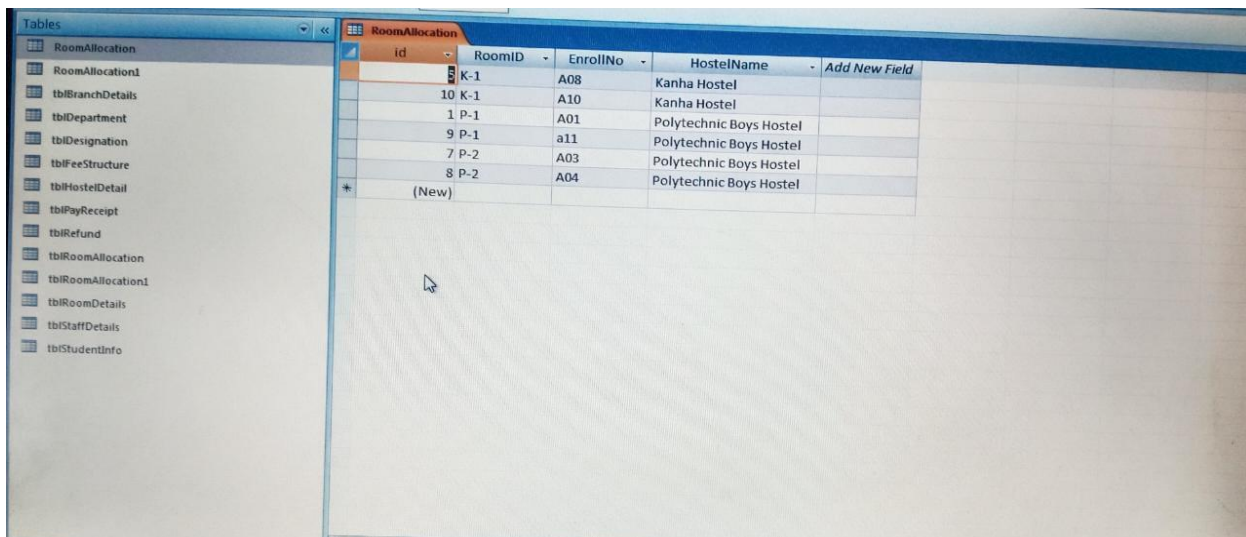
6.3 DFD's (Data Flow Diagram)

A Hostel management system data flow diagram (DFD) shows how the information within a Hostel system needs to flow to meet the needs of patrons or students as well as Hostel administrators. You can adapt this Hostel management system DFD template to match the circumstances of your own Hostel.



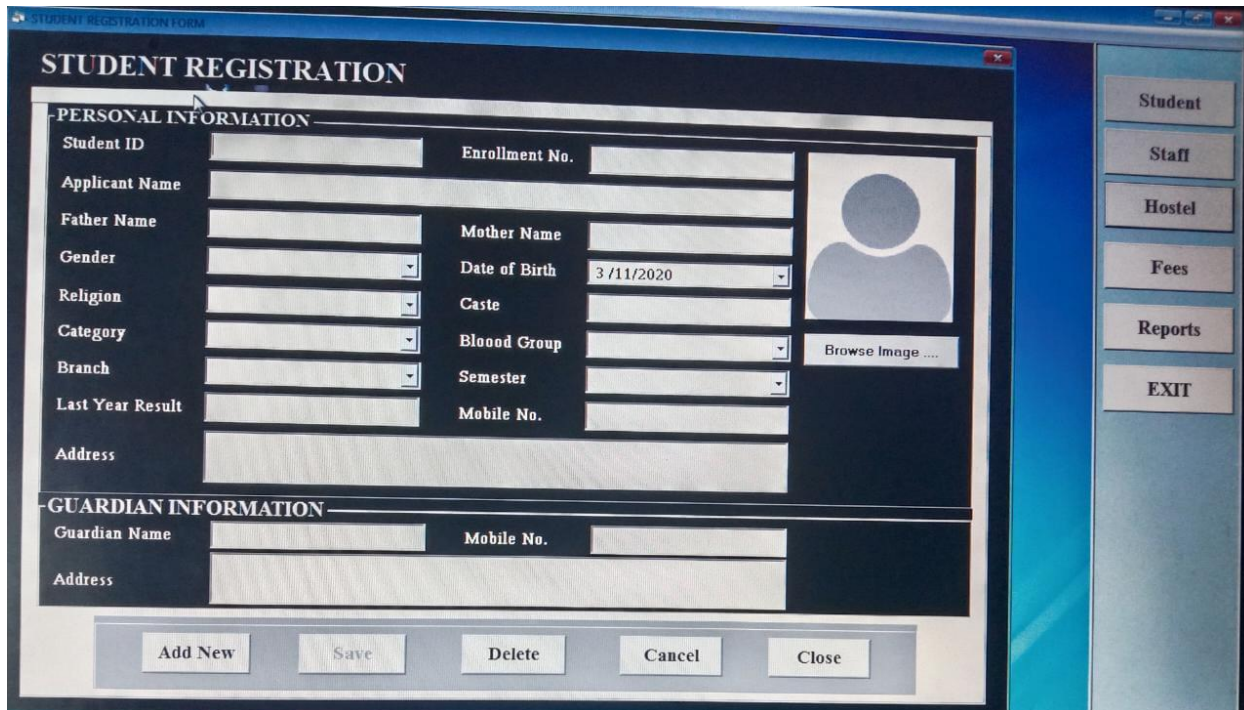
SYSTEM DESIGN

7.1 Database Design (Back end):



id	RoomID	EnrollNo	HostelName	Add New Field
5	K-1	A08	Kanha Hostel	
10	K-1	A10	Kanha Hostel	
1	P-1	A01	Polytechnic Boys Hostel	
9	P-1	a11	Polytechnic Boys Hostel	
7	P-2	A03	Polytechnic Boys Hostel	
8	P-2	A04	Polytechnic Boys Hostel	
*	(New)			

7.2 Screen Design (Front end):



DOCUMENTATION

8.1 Operational Document:

it must be an Integrated Hostel Management System (ILMS) that allows complete automation of the various Hostel operations and activities, starting from core operations for wardens such as cataloging, classification, circulation and acquisition to the secure automatic circulation operations and the capability to deal with various sources of information through compatibility with international .

In addition, technical capabilities and the possibility to electronically access all operations, functions and products with ease and fun at the same time, should also be considered.

Independence: Yes, the system should be completely independent. We have built an independent system that can function in any environment, under any ho...

8.2 Usual manual:

1. Run the project by Binary File.
2. Login your account as an Admin.
3. Admin can add, see, and remove Students.
4. Warden is controller of all activity of a Hostel module which is see the records, add students, delete Student, issue Rooms , Allot rooms.

CONCLUSION

We have successfully done our java based **Hostel management system minor** Project with my group member with their best performance and also thanks to my supervisor.

Mr. Zahid Ahmad Sir for best guidance and my all classmates, now our project is completely ready to present and ready to use for everyone.

We have make since to hence the power of managing Hostel system by our project and face the many problems and to develop this project, but we were and solved every problems solutions.

We have tested our projects many completed; now the project incompletely robust for uses everyone and everywhere. Every users or students is easily use our project and easily operate by everyone, and also make them. We have learned many more thinks about programming and hardware.

SCOPE OF PROJECT

We just marked the Simple Hostel management system for windows only using Vb.net Ms Access etc, but we will improve their functionality and features and modules in the future.

We will include the messaging system and modify as the dynamic and enhance to the basic functionality and also include the more features for the best management and also provide the more functionality and more activity and speed in the future.

We will include the system that is reduces the using Visual Basic programming language and searching option also. We will reduce complexity but hence it's Functionality the future.

We will make more and more projects using Vb.net in the future scope and also hence.