

## Petverse

Dr.P.Sumathi<sup>1</sup>, Rajitha M<sup>2</sup>, Gaja Lakshmi R J<sup>3</sup>, Gouri Parvathy A<sup>4</sup>, Johann Manuel Kenneth<sup>5</sup>,  
Arshitha S<sup>6</sup>

<sup>1</sup>Head of the Department, Artificial Intelligence & Data Science & SNS College of Engineering

<sup>2</sup> Assistant Professor, Artificial Intelligence & Data Science & SNS College of Engineering

<sup>3</sup> 4<sup>th</sup> Year, Artificial Intelligence & Data Science & SNS College of Engineering

<sup>4</sup> 4<sup>th</sup> Year, Artificial Intelligence & Data Science & SNS College of Engineering

<sup>5</sup> 4<sup>th</sup> Year, Artificial Intelligence & Data Science & SNS College of Engineering

<sup>6</sup> 4<sup>th</sup> Year, Artificial Intelligence & Data Science & SNS College of Engineering

\*\*\*

**Abstract** - PetVerse is an innovative web application designed to enhance pet care through AI-powered features. Pet owners often struggle with managing their pets' vaccination schedules, sourcing reliable veterinarians, and tracking health recommendations. PetVerse addresses these challenges by offering personalized AI-driven suggestions for food and vaccinations, a community-based lost pet reporting system, and real-time location-based services for pet care providers. Built using React for the frontend, Firebase for backend services, and Node.js for server-side operations, PetVerse is scalable and modular, ready for future AI enhancements. Initial user testing shows a high satisfaction rate, indicating the app's potential to revolutionize pet management.

**Keywords**—Pet care, Artificial Intelligence, Web application, Recommendation system, Lost pets, Reminder system, Firebase, React.

### 1. INTRODUCTION

Pets are family members, and their health and well-being are a priority for many pet owners. However, managing multiple aspects of pet care—like nutrition, vaccinations, health checkups, and emergencies—can be overwhelming. Often, owners rely on paper records or multiple apps, which can result in missed appointments and insufficient care. In the case of a missing pet, there's also little structured support available. PetVerse aims to solve these issues by providing an all-in-one platform that covers everything from proactive health management to community-driven support. The application empowers pet owners with personalized suggestions, reminders, and tools that simplify everyday pet care.

### 2. BODY OF THE PAPER

The body of the paper consists of several sections that present the main findings. These sections are organized as follows:

#### 2.1 Literature Review

Existing applications for pet care are primarily focused on individual aspects of pet health but fail to provide a comprehensive solution. For example:

- PetDesk helps users track veterinary appointments, but it lacks AI-powered personalization.

- 11Pets offers cloud-based medical records but does not integrate machine learning for personalized recommendations or community features. PetVerse stands out by offering a unified solution that combines AI recommendations with community-driven lost pet tracking, real-time notifications, and pet health management in one platform.

#### 2.2 System Architecture

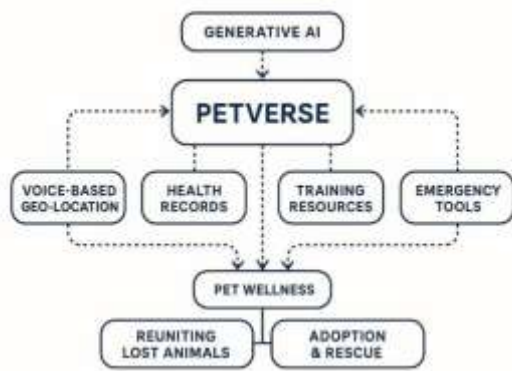
PetVerse follows a modular architecture to ensure scalability and maintainability:

- Frontend:** Built using ReactJS, ensuring a responsive and dynamic user interface.

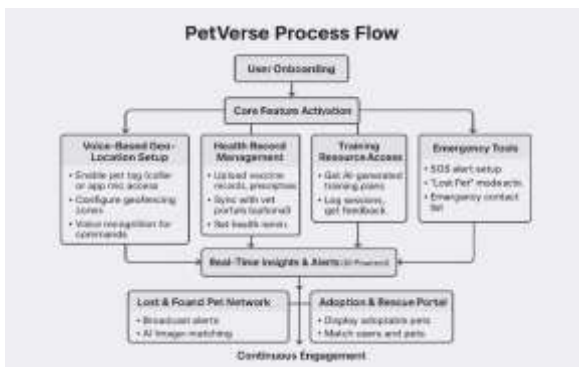
- Backend:** Firebase is used for authentication, real-time data storage, and cloud functions.

- AI Module:** Initially based on rule-based algorithms for food and vaccine recommendations, with future plans for deeper AI integration.

- Lost Pet System:** Allows users to post lost pets, which are then shared with the community.



- Vaccination Module: Provides breed-specific vaccination schedules and sends reminders.
- Lost & Found System: Allows users to upload images and descriptions of missing pets, which are shared with the community.
- Nearby Services: Google Maps API is used to locate pet shops and veterinary clinics nearby.



## 2.3 Methodology

The development of PetVerse followed the Agile methodology, focusing on iterative development and early user feedback:

- User Input: Users provide details about their pets, including breed, age, weight, and vaccination status.
- Recommendation Engine: A rule-based system initially suggests food and vaccines, with plans to incorporate AI for allergy detection and behavioral analysis.



## 2.4 Features

Key features of PetVerse include:

- AI Recommendations: Personalized suggestions for pet food and vaccinations.
- Lost Pet Community: A system for reporting and finding lost pets.
- Notifications: Alerts for vaccinations, health tips, and new community posts.
- Pet Dashboard: A dedicated space to track pet health, appointments, and activities.
- Video Library: Educational content and training resources for pet owners.

## 2.5 Results and Evaluation

PetVerse was tested with a sample group of 20 users. The results were promising:

- Ease of Use: 85% of users found the app intuitive and easy to navigate.
- Feature Usefulness: 90% appreciated the reminder system and lost pet tracking features.
- Performance: The app performed well, with load times under 2 seconds for all users. Firebase ensured smooth data syncing.
- User Suggestions: Users requested additional features like health condition monitoring and voice-based pet identification.

---

### 3. CONCLUSION

PetVerse demonstrates the potential of AI and communitydriven tools to significantly improve pet care management. The app's ability to integrate pet health management, lost pet reporting, and real-time notifications in one platform makes it a valuable resource for modern pet owners. Future updates will include AI symptom checkers, veterinary integrations, and chatbot assistants, making PetVerse even more robust and userfriendly.

### ACKNOWLEDGEMENT

The authors would like to acknowledge the support of SNS College of Engineering and the volunteers who

participated in user testing. Special thanks to the development team for their hard work in bringing PetVerse to life.

---

### REFERENCES

1. Baldonado, M., Chang, C.-C.K., Gravano, L., Paepcke, A.: The Stanford Digital Library Metadata Architecture. *Int. J. Digit. Libr.* 1 (1997) 108–121
2. Bruce, K.B., Cardelli, L., Pierce, B.C.: Comparing Object Encodings. In: Abadi, M., Ito, T. (eds.): *Theoretical Aspects of Computer Software. Lecture Notes in Computer Science*, Vol.