

PHOTOGRAPHY STUDIO : Case study of photography studio

Sakshi Iote¹, Ar. Aman Gupta²

¹ Student, Department of Interior Design, Kalinga University, Naya Raipur

² Head of Department, Department of Interior Design, Kalinga University, Naya Raipur

Abstract

This research paper explores the role of photography studio is that can be serve reception area , meeting area ,editing room, makeup room . it identifies key design elements that enhance

Lighting

Key Words: shoot , editing , design, comfort, meeting.

1. INTRODUCTION

A photography studio is a workspace specifically designed and built for the purpose of taking photographs. The required lighting for an image can then by the photographer using lighting ,for the model , couple, kids shoot & the subject placement like seating area with the chair or background for the shoot allow the capturing for shooting image in an environment free from obtrusive external light sources.

AIM AND OBJECTIVES:

To create 3 set of room is a work with different conceptual set like baby shoot, couple shoot, model shoot some are loyal look for couple shoot with lighting, mirrors, background.

- To make client comfortable while for sitting as sometimes there is no sitting space.
- To make the meeting area for the meeting purpose with the client.
- To make makeup room is to be provided.

CASE STUDIES:

The photography field with many leading with smartphones coming with high quality camera or posting them with paid work with the company them on social media. Photographers form small communities and go for each other work collaborate on various social media platforms .

PHOTO STUDIO EQUIPMENT

Camera & Lens

Camera bag

Memory cards Software for editing work Tripod

Backdrops

Flash stand, lighting.

FURNITURE SIZES

Desk chair-20-inches wide by 36-inches tall .

Reception desk- 48-inches wide by 30-inches deep by 30-inches tall.

2 Seater- 38-inches deep by 60-inches deep by 60-inches wide.

Three -seat sofa- 38-inches deep by 90-inches wide.

2.LIVE CASE STUDY

MONIKA STUDIO Raipur, chhattisgarh

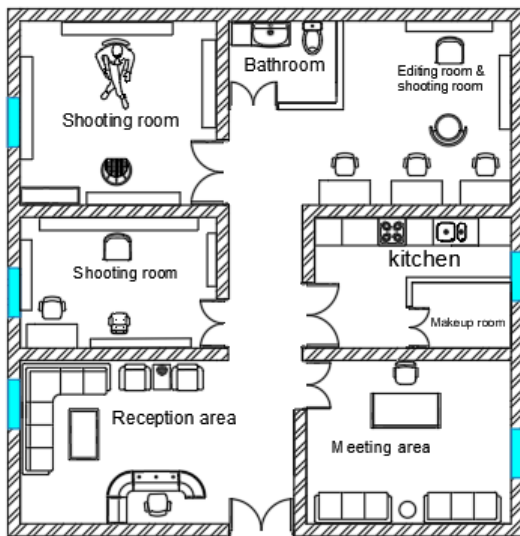


A network of like minded for positive change for a studio like is a single room with reception area with desk or chair. In the entry's then 2 editing desk with computer desk or backdrops with white color as the flash stand or lighting stand & some frames in the wall .

3.CONCEPT

The photography is the photoshoot translates to using idea to the client the full story of a character. But story visual Therefore every detail counts . for the shoot wardrobe ,location, setting, lighting and the props are the part of the story .the elements and blend them with for the shoot concept photography is a theme & expression and the way to creativity in freeform.

DESIGN PROPOSAL



PLAN

RECEPTION AREA- The reception area for the room you enter in a workspace & its like seating L shape sofa or 2 set of chairs its primary function to guide them on their for way to meeting it is the place where you greet your client.

MEETING AREA – Meeting room is that when two or more people come together to discuss one or more topic, often in formal or business setting or other environments.

SHOOT AREA

BABY SHOOT AREA- The baby shoot area is that newborn is the general term for taking pictures of human babies, from birth to about one year to 12 months age. There are different type of shoot for baby shoot as that the on different stages of the life you can photo shoot capture the pictures for memory is the most efficient and artistic manner.

COUPLE SHOOT AREA- The main aim is that to get to know your photographers and the can get to know your as a couples . its can spend a little bit of a pressure situation talking and fears of getting photographed for a couple and the most had a prewed shoot for a couple few days month or sometimes just days before the wedding.

MODEL SHOOT AREA – A model shoot is that like a male or female shoot means that taking a photographed for a model for the portfolio usually that means that a model gives as a pose for a photographer must have a shoot with models basic brand shoot or product shoot with them.

MAKEUP AREA – The main foundation is that to makeup area as pre shoot in studio for some models or baby or couple or some people to change the wearing cloth or doing here makeup for her or some elements that's why given the makeup room

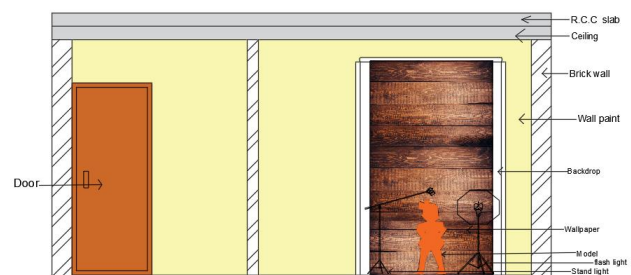
EDITING ROOM – first process that involves the content for the shoot and presentation to purpose of editing is ensure or ideas for the shoot as clearly as possible for focuses the edit the photo for the client .



Elevation of baby shoot area



Elevation of couple area



Elevation of model area



3D view of baby shoot area



3D view of couple area



3D view of model area

BIOGRAPHIES



Sakshi Iote
Semester- VI
Department of Interior Design
Kalinga University, Naya Raipur,
Chhattisgarh



Ar. Aman Gupta
Assistant professor
Department of Interior Design
Kalinga University, Naya Raipur,
Chhattisgarh

4. CONCLUSIONS

From the problem identified, the design proposal is done and the conclusion is that the people will get more space and more background effect is placed. The private meeting area is purposed for the clients and the makeup room will also helps the user. Therefore in this photo shoot studio, more background effect with space with a makeup room will help a client as a easy space using space.