

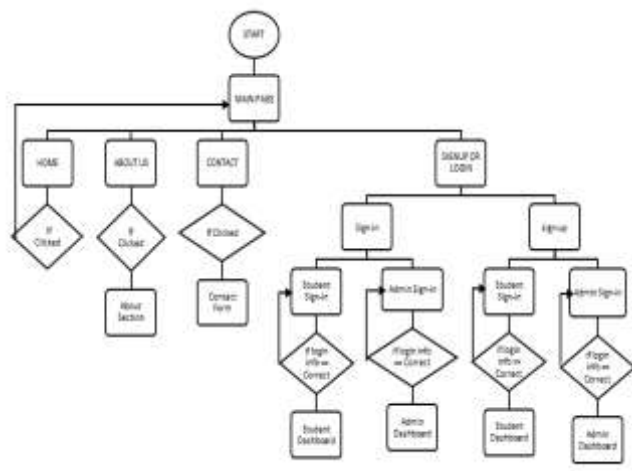
Placement Management Web Portal

Sakshi Jagtap¹, Tanaya Jarad², Pratik Kendale³, Prof.Kale S.D.⁴

^{1,2,3} Student, ⁴Professor, Dept of Electronics and Telecommunication Engineering, SVPM's College Of Engineering Malegaon(Pune), India

3. Methodology

A. Home page



- **Start:** The user initiates interaction with the system by opening the platform.
- **Main Page:** The user is directed to the homepage, offering options for general navigation (Home, About Us, Contact) and login/sign-up sections.
- **Main Navigation Options:**

- **Home:** Redirects to the homepage with platform overview.
- **About Us:** Provides information about the platform's mission, vision, and goals.
- **Contact:** Directs to a contact form for user inquiries, requiring name, email, and message.

- **Sign-Up/Login:** For access to personalized features, users can sign up or log in.
- **Sign-in:** Users select either Student or Admin login, providing credentials for access to respective dashboards.

- **Student Sign-in:** Grants access to the Student Dashboard after successful login.
- **Admin Sign-in:** Grants access to the Admin Dashboard after successful login.

- **Sign-up:** New users can create accounts as students or admins.

- **Student Sign-up:** After registration, students log in to access their personalized dashboard.

Abstract - Placement Management Portal is an end-to-end web-based system developed streamline and automate student placements. The portal leverages cutting-edge web technologies such as React. Node.js and Express for back-end; front-end development, and SQL/ MongoDB to handle databases. The portal provides unimpeded interaction among administrators, students, and corporations. It provides functionalities like student registration, profile management, Resume uploads, job postings, and placement drive scheduling. This System improve transparency and effectiveness in the placement process.

The portal centralizes efforts, dramatically reducing manual work, improves stakeholder engagement, and that recruiters and students are able to monitor placement activity in real-time. This answer seeks to improve the student placement process and recruiters, easing the handling of huge data and communications in a systematic way.

Key Words: Placement, Web portal, students, recruiter, Admin

1. INTRODUCTION

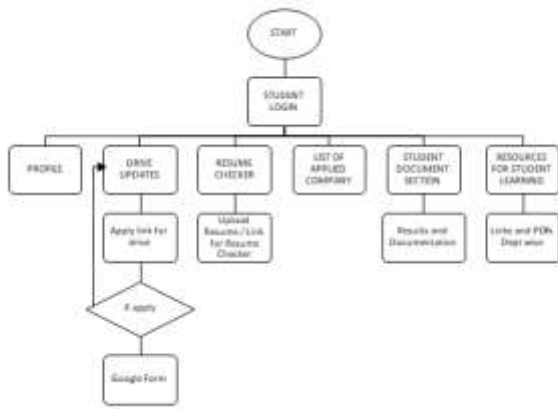
The Placement Management Portal is an innovative web-based application designed to simplify and optimize the campus recruitment process. As the number of institutions and participating companies in placement drives continues to grow, managing logistics and communication among all stakeholders can become increasingly complex. This portal offers a comprehensive, plug-and-play solution that automates key processes, making the entire placement workflow more efficient, transparent, and well-organized.

2. Objectives

The Placement Portal idea emerged out of the combined inefficiencies observed in the conventional campus placement processes. Institutions and organizations will more likely use a manual system in processing applications, learner profiles, and job advertisements, resulting in a number of problems.

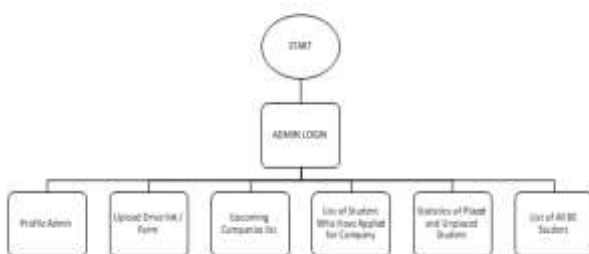
- **Admin Sign-up:** After registration, admins log in to access the admin dashboard.

B. Student Login



- **Initiation:** The student enters the system, leading to Student Login.
- **Student Login:** Students log in with their username and password.
- **Main Features:**
 - **Profile:** Update personal and academic details.
 - **Drive Update:** View and apply for placement drives by submitting a Google Form.
 - **Resume Checker:** Upload and check resume formatting and relevance.
 - **Applied Companies:** Track application status for applied companies.
 - **Documents:** Upload and manage academic and placement documents.
 - **Resources:** Access department-specific learning materials for interview prep.

C. Admin Login



- **Start:** The entry point of the system.
- **Admin Login:** Admins log in using credentials with multi-factor authentication and role-based access.
- **Profile Admin:** Admins manage their profile, including contact details and password settings.

- **Upload Drive Link/Form:** Admins upload company documents and forms, with cloud storage integration.
- **Upcoming Companies List:** Shows companies for recruitment drives with search, filtering, and reminders.
- **List of Applied Students:** Displays students who applied for jobs with tracking and download options.
- **Placement Statistics:** Shows placement data, employment rates, and visual reports.
- **List of BE Students:** Lists all BE students with search and export options..
- **Additional Considerations:** Focus on security, user-friendly interface, system integration, and customization.
- **Context Needed:** Clarify use case, target users, tech stack, and data privacy practices.

4. Technologies

Node.js

- **Info:** Node.js is a runtime environment that allows JavaScript to run on the server side.
- **Features:**
 1. Fast performance using Chrome's V8 engine
 2. Cross-platform
 3. Suitable for real-time applications like chat apps
 4. Non-blocking I/O (asynchronous)

React

- **Info:** React is a JavaScript library used for building user interfaces, mainly for single-page applications.
- **Features:**
 1. Component-based structure
 2. Virtual DOM for faster updates
 3. Reusable UI components
 4. Unidirectional data flow

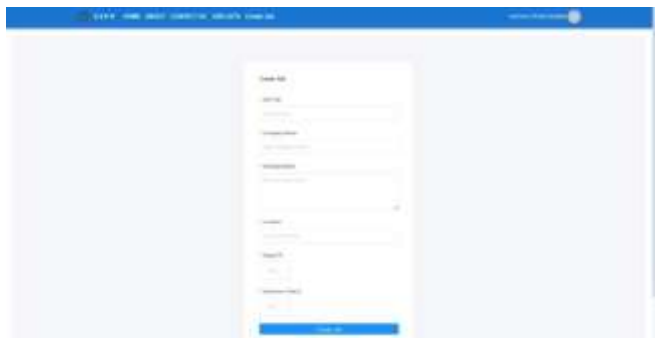
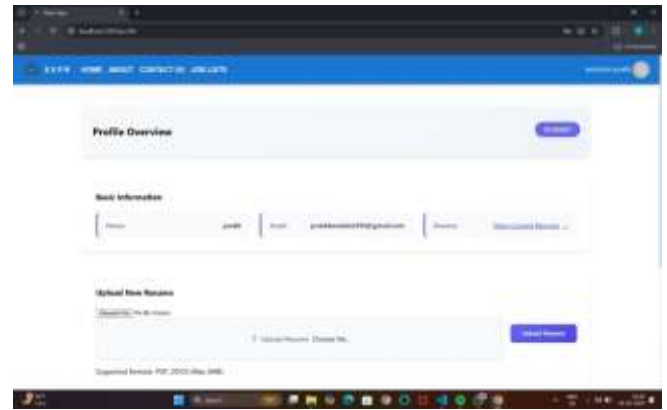
Express.js

- **Info:** Express is a minimal and flexible web framework for Node.js, used to build web applications and APIs.
- **Features:**
 1. Simple routing
 2. Middleware support
 3. Easy to integrate with databases
 4. Lightweight and fast

MongoDB

- Info: MongoDB is a NoSQL database that stores data in JSON-like documents.
- Features:
 1. Schema-less (flexible data model)
 2. Scalable and high performance
 3. Supports indexing and aggregation

5. Result



6. CONCLUSIONS

The Placement Management Web Portal provides a comprehensive and user-friendly platform that streamlines the entire campus recruitment process. By integrating features for both administrators and students, the system ensures efficient job posting, real-time application tracking, and easy communication between all stakeholders. The portal enhances transparency, reduces manual work, and supports students in preparing for and applying to placement opportunities effectively. Overall, this project contributes to a more organized and accessible placement experience, making the recruitment process smoother and more reliable for educational institutions.

ACKNOWLEDGEMENT

We would like to express our sincere gratitude to our project guide, Prof. Kale S.D., for his constant support, insightful guidance, and encouragement throughout the development of this project. We are also deeply thankful to Dr. Patil R.K., Head of the Department, for providing us with the necessary resources and a motivating environment that played a vital role in the successful completion of this work.

Our heartfelt thanks go to all the faculty members of the Electronics & Telecommunication Department at SVPM's College of Engineering, Malegaon (Bk) for their assistance, valuable feedback, and support. We also appreciate the institute for offering essential resources such as internet access, reference materials, and laboratory facilities that greatly contributed to our project.

REFERENCES

- [1] Farheen Taqi Rizvi, Naushin A. Khan, Saurabh Upadhyay, Sonali Suryawanshi, and Shiburaj Pappu (2021). *A study on Placement Management System*. Published in JETIR, Volume 8, Issue 4, April 2021.
- [2] Sampada Kayat, Archit Gupta, Badrinath Sabban, and Raviraj Nagarkar (2024). *Design and Implementation of a Placement Management System*. International Journal of Creative Research Thoughts (IJCRT), Volume 12, Issue 6, June 2024.
- [3] Mithilesh Pandit, Prakash Raje, Prasad Lomate, and Dr. Nikita Kulkarni (2022). *AI-driven Placement Management System*. International Journal of Research in Engineering and Science (IJRES), Volume 10, Issue 1.
- [4] Alfiya Banu and Dr. Manju Bargavi S. K (2022). *Research on Enhancing Placement Management Systems*. International Journal for Research in Applied Science and Engineering Technology (IJRASET), Volume 10, Issue IV, April 2022.
- [5] Shital K. Patil, Sakshi S. Thombare, Rasika R. Wadhonkar, and Sonal R. Wankhade (2022). *Development of a Web-Based Training and Placement Portal*. International Journal of Advanced Research in Science, Communication and Technology (IJARSCT), Volume 2, Issue 1, May 2022.
- [6] Sayyed, M., Umatiya, F., Zehera, S., & Pappu, S. (2020). *College Placement Management System*. International Journal of Creative Research Thoughts (IJCRT), 8(6).
- [7] Phaneendra, H. D., Harshit, S., Agarwal, R. P., Narayan, R., & Abhilasha. (2018). *Placement Portal*. International Journal of Scientific Research and Engineering Development, 5(4).
- [8] Suryavanshi, R. R., & Pujar, S. (2024). *Placemaster – The Placement Management System for College*. International Journal of Research Publication and Reviews, 5(March).
- [9] Nicholine, P., Priya, L., Ilakkiya, K., Kartheeswari, K., & Malar, K. (2023). *Placement Management System*. International Journal of Innovative Research, 3(4).
- [10] Kamble, K., Jadhav, S., Khanvilkar, S., & Dhannawat, P. (2024). *UMIT Placement Management Portal*. International Journal of Advanced Research and Technology, 10(3).
- [11] Agarwal, M., Nagar, L., Agarwal, D., & Surolia, J. (2024). *Placement Portal: A Web-Based Employment Solution for College Students*. International Journal of Emerging Technologies and Innovative Research, 9(4).