

PREDICTIVE DISEASE PROGNOSIS USING LINEAR REGRESSION

Mrs.R.Geethanjali¹, Ms.Sarulatha², Ms. V. Nithyashree³, Ms. R. Lavanya⁴ Ms. M. Pooja⁵
Assistant Professor¹, Students²³⁴⁵, Department of Computer Science and Engineering, Angel
College Engineering and Technology, Avinasipalayam, Tirupur, TamilNadu, India.

Email:¹geetha9922@gmail.com,²sarulathav05@gmail.com.,³nithyashree5300@gmail.com⁴Lava
nya04061999@gmail.com ,⁵poojamuralipooja248@gmail.com
healthcare management.

ABSTRACT

Early disease prediction plays an important role in improving healthcare services and medical research. This project focuses on predicting diseases by analyzing patient-related data and identifying potential health risks at an early stage. The proposed system uses various data sources such as medical history, lifestyle habits, and clinical information to build predictive models. These models help in detecting possible diseases and providing early warning indications.

The main objective of this system is to assist healthcare professionals and individuals in making better medical decisions and taking preventive measures. A reliable disease prediction system should provide accurate, efficient, and adaptable results across different environments.

In this work, a Linear Regression-based approach is implemented to predict diseases. The proposed method improves prediction accuracy

and helps in identifying meaningful patterns from medical datasets. This system supports early diagnosis and contributes to better

Keywords: Disease Prediction, Early Detection, Healthcare, Machine Learning, Prognosis, Semantic Analysis

1. INTRODUCTION

Disease prediction is becoming an important part of modern healthcare systems. Early identification of diseases helps in improving patient outcomes and reducing treatment costs. By focusing on prevention rather than treatment, healthcare services can become more efficient and accessible to patients.

The main objective of this project is to develop a disease prediction system using data-driven techniques. This study explores different methodologies and technologies used in predictive healthcare. It also highlights the importance of machine learning and data analytics in improving healthcare services.

Furthermore, this project emphasizes preventive healthcare and personalized treatment. The integration of machine learning techniques helps in analyzing patient data and generating accurate predictions. This improves decision-making for healthcare professionals and enhances the quality of patient care.

1.1 HEALTHCARE

Healthcare plays a vital role in maintaining and improving human health. It includes various services such as prevention, diagnosis, treatment, and rehabilitation. Healthcare systems consist of hospitals, medical professionals, and advanced technologies working together to provide quality medical care.

The healthcare industry is continuously evolving to meet the growing medical needs of society. Technological advancements such as artificial intelligence, machine learning, and data analytics are improving healthcare delivery and patient management.

However, the healthcare sector faces several challenges including limited resources, high treatment costs, and accessibility issues. These challenges require collaboration between healthcare professionals, policymakers, and technology experts to improve healthcare services.

1.2 MACHINE LEARNING

Machine learning is a branch of artificial intelligence that enables systems to learn from data and improve their performance automatically. Instead of being explicitly programmed, machine learning algorithms analyze large datasets and identify patterns to make predictions or decisions.

Machine learning is widely applied in various industries such as healthcare, finance, transportation, and entertainment. In the healthcare domain, machine learning helps in disease diagnosis, risk prediction, and personalized treatment planning.

These models process complex medical datasets, detect hidden relationships, and generate meaningful insights. As a result, machine learning plays an important role in solving real-world healthcare problems.

Despite its advantages, machine learning also faces challenges such as poor data quality, lack of interpretability, and privacy concerns. Overcoming these challenges is necessary for developing reliable healthcare systems.

DISEASE PREDICTION

Disease prediction focuses on identifying potential health problems before symptoms become severe. It uses machine learning algorithms and data analytics techniques to improve early detection and prevention.

Predictive models analyze patient information such as medical history, lifestyle habits, and clinical data. Based on this information, the system estimates the probability of diseases and assists healthcare professionals in decision-making.

Disease prediction systems improve patient outcomes and support healthcare management. These systems help in reducing treatment costs, optimizing resource allocation, and enhancing preventive healthcare strategies.

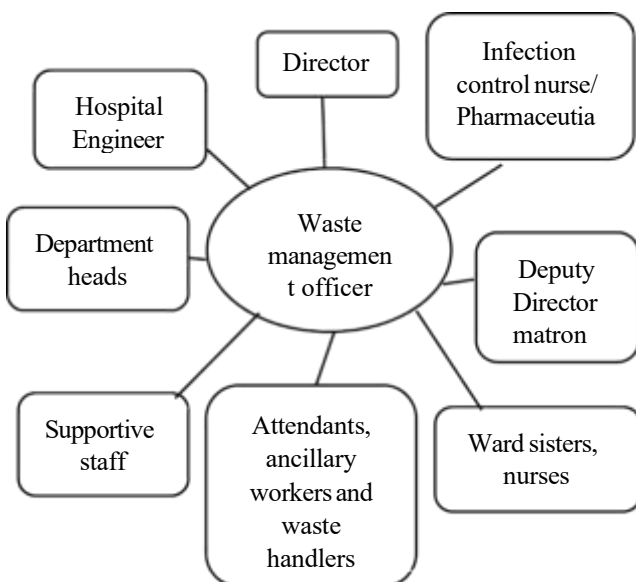


Figure 1. Healthcare

2. LITERATURE REVIEW

Several research studies have explored machine learning techniques for disease prediction.

Studies on chronic disease prediction have demonstrated that stacking classifiers improve prediction accuracy and support clinical decision-making.

- Digital twin-based healthcare systems provide real-time monitoring and disease prediction. Optimized fuzzy k-nearest neighbor techniques improve system performance.
- Deep learning models have been applied to predict cardiovascular diseases using large medical datasets.
- Chronic kidney disease prediction systems use deep learning and data preprocessing techniques to handle missing values and improve accuracy.
- Technologies such as fog computing and blockchain improve data security and enhance healthcare services.

3. EXISTING SYSTEM

Existing disease prediction systems mainly rely on computer-aided diagnosis techniques. These systems use machine learning algorithms to analyze medical data and assist healthcare professionals.

However, traditional methods often face difficulties in handling complex datasets. These limitations affect prediction accuracy and system performance.

Most existing systems focus on predicting diseases such as heart disease and diabetes. Despite these advancements, challenges such as scalability, accuracy, and data quality remain.

4 PROPOSED SYSTEM

The proposed system uses a machine learning-based approach with Linear Regression for disease prediction. The system integrates multiple data sources including medical history, symptoms, and lifestyle information.

Users provide symptoms as input, and the system processes the data using semantic analysis. Based on this analysis, the model predicts possible diseases.

The system is trained using a large dataset, allowing it to identify patterns associated with different diseases. This approach improves prediction accuracy and reliability.

5. MODULE DESCRIPTIONS

5.1 DATA PREPROCESSING SEMANTIC WORD ANALYSIS

Data preprocessing is an important step in the disease prediction system. Medical data collected from different sources may contain missing values, noise, and irrelevant information. Therefore, the data must be cleaned and organized before applying machine learning techniques.

Semantic word analysis is used to interpret symptom descriptions provided by users. This process helps the system understand the meaning of input data and improves prediction accuracy.

5.2 DISEASE IDENTIFICATION

The disease identification module analyzes processed data to determine possible diseases. The system evaluates input symptoms and medical history to generate predictions.

This module uses:

- Machine learning algorithms to identify patterns
- Natural language processing to

understand symptoms

- Knowledge-based systems using predefined rules

The system compares input data with historical medical records and considers factors such as:

- Symptom severity
- Duration of symptoms
- Patient age and gender
- Previous medical conditions

5.3 WEIGHT ASSIGNING

Weight assigning determines the importance of each symptom. The system assigns weights based on how closely symptoms match specific diseases. This helps in calculating the probability of each disease.

5.4 PATTERN MATCHING

Pattern matching compares patient data with known disease patterns stored in the database. This process identifies similarities between current input and historical data. Techniques such as fuzzy matching and similarity analysis are used to improve prediction accuracy.

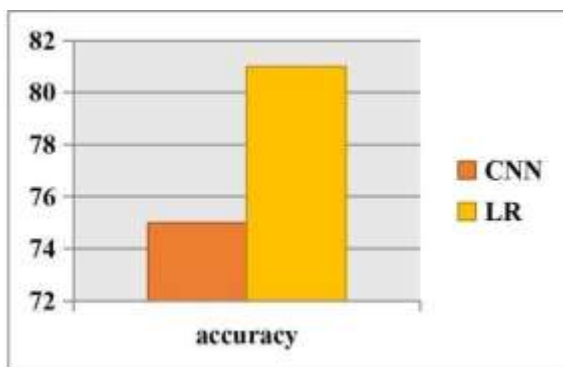


Figure 3. Block Diagram

5.5 DIFFERENTIAL DIAGNOSIS

Differential diagnosis is the final stage of the system. It narrows down possible diseases and

identifies the most probable condition.

This stage includes:

- Removing low probability diseases
- Comparing similar diseases
- Using additional medical parameters

6. RESULT ANALYSIS

The proposed disease prediction system is evaluated using Linear Regression and Convolutional Neural Network models. The performance of both models is compared based on prediction accuracy.

The experimental results are:

- CNN Accuracy: 75%
- Linear Regression Accuracy: 81%

These results indicate that Linear Regression performs better for the given dataset.

1.1 PERFORMANCE COMPARISON

6

The comparison shows that:

- Linear Regression performs well for structured data
- CNN is suitable for image-based datasets
- Linear Regression provides faster execution

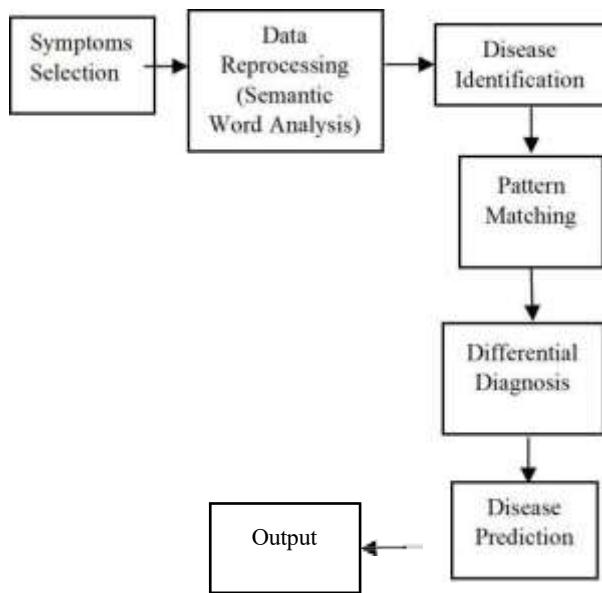


Figure 4. Comparison graph

6.2 EVALUATION METRICS

Model performance is evaluated using different metrics:

- Precision
- Recall
- F1-score
- Specificity

These metrics provide a detailed evaluation of model performance.

Specificity: Measures the ability to identify negative cases

6.3 INTERPRETATION OF RESULTS

6.3 INTERPRETATION OF RESULTS

The results suggest that:

- The dataset contains linear relationships
- Simple models perform better for structured data
- Feature selection improves prediction accuracy

However, the system performance depends on:

- Dataset quality
- Model training
- Parameter tuning

6.4 LIMITATIONS

The system has some limitations:

- Dependence on dataset quality
- Difficulty handling non-linear data
- Lack of real-time data integration

These limitations can be addressed in future work to improve system performance.

CONCLUSION

Disease prediction using machine learning provides an effective solution for early diagnosis and healthcare improvement. The proposed system uses Linear Regression to analyze patient data and predict possible diseases. The model provides reliable predictions and improves healthcare decision-making.

The developed system helps in identifying diseases at an early stage and supports preventive healthcare. It also reduces medical costs and improves patient outcomes. The integration of semantic analysis, pattern matching, and machine learning techniques enhances system performance.

The proposed system demonstrates that machine learning models can assist healthcare professionals in making accurate decisions. This approach supports the transition from traditional treatment methods to preventive healthcare solutions.

FUTURE ENHANCEMENT

Several improvements can be implemented to enhance system performance:

1. Large-Scale Data Integration

Future systems can use large datasets such as:

- Electronic health records
- Wearable device data
- Real-time monitoring data

These datasets improve prediction accuracy and reliability.

2. Advanced Machine Learning Models

Future systems may incorporate:

- Deep learning models
- Ensemble learning methods
- Hybrid algorithms

These techniques improve prediction performance for complex datasets.

3. Model Interpretability

Improving model transparency is important. Techniques include:

- Explainable AI
- Feature importance analysis

These methods help healthcare professionals understand predictions.

4. Personalized Medicine

Future systems may provide personalized predictions based on:

- Genetic information
- Lifestyle factors
- Medical history

This enables customized treatment planning.

5. Real-Time System Implementation

Future systems can integrate with:

- Mobile healthcare applications

- Hospital management systems
- IoT-based healthcare devices

This enables continuous monitoring and real-time prediction.

6. Data Security and Privacy

To ensure data protection:

- Encryption techniques
- Blockchain technology
- Secure data sharing

These measures improve patient data security.

7. Global Healthcare Integration

Future systems can support:

- Remote healthcare services
- Telemedicine platforms
- Smart healthcare systems

This improves healthcare accessibility worldwide.

REFERENCES

[1] P. Yadhav, S. C. Sharma, R. Mahadeva, and S. P. Patole, "Examining Hyperparameters and Feature Selection Methods for Anticipating Non-Communicable Chronic Diseases With a Stacking Classifier," *IEEE Access*, vol. 11, no. 2, pp. 80030–80055, Jan. 2023.

[2] L. Abirami and J. Karthikeyan, "A Digital Twin-Based Healthcare System for Early Parkinson's Disease Detection Using Optimized Fuzzy-Based K-Nearest Neighbor Classifier," *IEEE Access*, vol. 11, no. 5, pp. 96661–96672, Sept. 2023.

[3] S. Ghorashi, K. Rehman, A. Riaz, H.

- K. Alkahtani, A. Parveen, and A. H. Samak, "Utilizing Regression Analysis for Anticipating Concurrent Symptoms of Cardiovascular Diseases," *IEEE Access*, vol. 11, no. 5, pp. 60254–60266, June 2023..
- [4] V. Panwar, N. Choudhary, S. Mittal, and G. Sahu, "Streamlined Medical Diagnosis of Human Heart Diseases Through Machine Learning Techniques With and Without GridSearchCV," *IEEE Access*, vol. 10, no. 4, pp. 80151–80173, Apr. 2022.
- [5] G. Shynu, V. G. Menon, R. L. Kumar, and Y. Nam, "Blockchain Enabled Secure Healthcare Application for Diabetic-Cardio Disease Prediction in Fog Computing Environment," *IEEE Access*, vol. 9, no. 9, pp. 45706–45720, Mar. 2021.
- [6] A. Noor et al., "Heart Disease Prediction Using Stacking Model With Balancing Techniques and Dimensionality Reduction," *IEEE Access*, vol. 11, pp. 116026–116045, Oct. 2023.
- [7] A. Rahim et al., "A Unified Machine Learning Framework for Enhanced Prediction of Cardiovascular Diseases," *IEEE Access*, vol. 9, no. 1, pp. 106575–106588, July 2021.
- [8] Chittora et al., "Prediction of Chronic Kidney Disease: A Machine Learning Perspective," *IEEE Access*, vol. 9, no. 2, pp. 17312–17334, Jan. 2021.
- [9] S. Akter et al., "Comprehensive Performance Assessment of Deep Learning Models in Early Prediction of Chronic Kidney Disease," *IEEE Access*, vol. 9, no. 1, pp. 165184–165206, Nov. 2021.
- [10] T. Rahman et al., "Development and Validation of an Early Scoring System for Prediction of Disease Severity in COVID19," *IEEE Access*, vol. 9, no. 1, pp. 120422–120441, Aug. 2021.
- [11] S. J. Pasha and E. S. Mohamed, "Novel Feature Reduction Model With Machine Learning and Data Mining Algorithms," *IEEE Access*, vol. 8, no. 3, pp. 184087–184108, Sept. 2020.
- [12] W. Hong et al., "A Medical History Based Potential Disease Prediction Algorithm," *IEEE Access*, vol. 7, no. 4, pp. 131094–131101, Sept. 2019.
- [14] K. Yang et al., "HerGePred: Heterogeneous Network Embedding Representation for Disease Gene Prediction,"