

# PULL OUT TESTER EQUIPMENT

Yash Sandip Bhamare<sup>1</sup>, Krushna Vasant Godse<sup>2</sup>, Omkar Santosh Gawali<sup>3</sup>, Tejas Bhushan Patil<sup>4</sup>

Ar. P. S. Chaudhari<sup>5</sup>, Mrs. P. V. More<sup>6</sup>

*Department of civil engineering  
K. K. Wagh Polytechnic, Nashik*

\*\*\*

**Abstract** – The strength and respectability of substantial sections in development projects are fundamental for guaranteeing underlying soundness and security. To survey the bond strength among support and cement in pieces, a take-out testing machine has been utilized. This examination explores the functional utilization of take-out testing to assess the bond strength of steel support inside substantial sections. The review frames the exploratory methodology, in which an exceptionally planned take out testing machine was utilized to expose tests of substantial sections to expanding pliable burdens. The power expected to start the draw out of support from the substantial framework was estimated and dissected. Results show that this system is a compelling method for evaluating the bond strength of chunks. The discoveries from the take out testing give significant experiences into the quality and dependability of substantial pieces utilized in development projects. Such testing helps with the ID of expected shortcomings, guaranteeing that sections fulfill or surpass primary guidelines. This exploration adds to upgrading the quality control and security estimates in the development business, at last working on the sturdiness and execution of substantial sections.

## Key Objectives:

- 1) Quality control
- 2) Assess bond strength between reinforcement and concrete
- 3) Economical and sustainability
- 4) Long term durability
- 5) Research and development

## 2.LITERATURE REVIEW

The literature survey The pull-out test, also known as the bond strength test, is a crucial technique in civil engineering for evaluating the bond between reinforcing bars and concrete. It measures the force required to pull a bar out of the concrete matrix, influenced by factors like surface preparation, concrete composition, embedment length, and loading rate. The test is used to assess bonding agents, construction techniques, and optimize concrete structure design. Recent advancements in instrumentation and data analysis have improved the accuracy and reliability of pull-out test results. The test is still a fundamental tool for assessing bond strength in concrete structures, and ongoing research is focused on incorporating experimental techniques and computational modeling to improve its reliability and effectiveness.

**Key Words:** Bond strength, Bond slip

## 1.INTRODUCTION

Take-out testing is a crucial process in development and structural design, ensuring the safety and reliability of underlying components like anchors, bolts, and dowels. It is primarily conducted using take-out analyzer equipment, which measures the power required to pull implanted clasps or support bars from their host material. The hardware consists of a water-driven actuator, load cells, and strain sensors, which ensure uniform power delivery and prevent unexpected failure. The test cycle is monitored and controlled using force-removal bends, providing valuable insights into the latch's presentation and compatibility with the surrounding material. It is essential for ensuring compliance with industry norms, codes, and guidelines, as well as for updating latch plans, selecting suitable materials, and approving hypothetical models used in initial testing and design.

## 3. METHODOLOGY

- First identify the area of pull out test.
- Find locally available material.
- Think about the easiest way to perform the test.
- Prepare the instrument in low cost.
- Assembling the instrument.
- In this way we prepare a instrument for pull out test.
- Calibrate with standards.

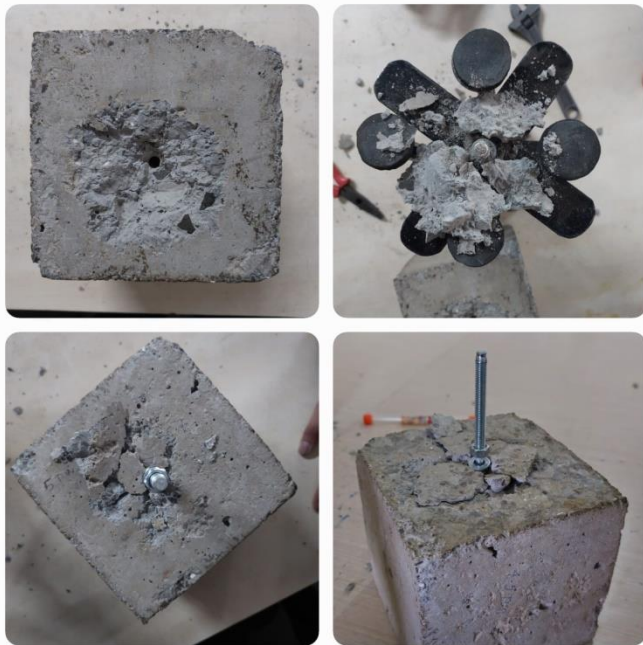
#### 4. RESULT

Sr. No	Name Of Specimen (Cement block)	PULL OUT FORCE OBTAINED (FU)			AVERAGE PULL OUT FORCE (FU) IN KN	COMPRESSIVE STRENGTH (FC) IN MPA
		TEST POINT 1	TEST POINT 2	TEST POINT 3		
1.	M15	4.5	5	3	4.16	4
	M20	4	4.5	3.5	4	4.2
	M25	4.5	4	5	4.5	4.5

#### REFERENCES

1. Ala'a H. Al-Zuhairi, Wjdan Dh. Al-Fatlawi, "Bond-slip relationship of reinforcing steel bars embedded in concrete", Research Gate, April 2009.
2. Biruk Hailu Tekle, Amar Khennane, "Bond Properties of Sand-Coated GFRP Bars with Fly Ash-Based Geopolymer Concrete", Journal of Structural Engineering (ASCE), vol. 04016025, pp.1-13, July 2016.
3. G. Appa Rao, R. Eligehausen, "Studies on the pull-out strength of ribbed bars in high-strength concrete" Research Gate, January 2007.

#### 5. PHOTOGRAPHS OF TEST SPECIMEN



#### 5. CONCLUSIONS

The pull-out test method is a crucial technique in civil engineering and construction, assessing the bond strength between concrete and reinforcement bars, crucial for structural integrity. It informs construction practices, design guidelines, and material selection.our custom made pull- out tester equipment is is economical as compare to which is available in market, easy to use etc.

#### ACKNOWLEDGEMENT

With deep sense of gratitude, we would like to thanks all the people who have lit our path with their kind guidance. We are very grateful to these intellectuals who did their best to help during our project work. Special thanks to Ar. P. S. Chaudhari sir to help in project work.