

# SkyPod: Deployable Protective Capsule for Aircraft Passenger Survival Systems

Vaibhav Mendake<sup>1</sup>, Atharva Patil<sup>2</sup>, Saksham Gupta<sup>3</sup>, Het Chhabhaiya<sup>4</sup>, Dr. Prakash Shinde<sup>5</sup>

<sup>1</sup> Computer Engineering , Dr.D.Y Patil Polytechnic, Kasaba Bawada, Kolhapur

<sup>2</sup> Computer Engineering , Dr.D.Y Patil Polytechnic, Kasaba Bawada, Kolhapur

<sup>3</sup> Computer Engineering , Dr.D.Y Patil Polytechnic, Kasaba Bawada, Kolhapur

<sup>4</sup> Computer Engineering , Dr.D.Y Patil Polytechnic, Kasaba Bawada, Kolhapur

<sup>5</sup> Computer Engineering , Dr.D.Y Patil Polytechnic, Kasaba Bawada, Kolhapur

\*\*\*

**Abstract** - Air travel has changed global transportation in the last century. It allows the quick movement of people and goods and helps build economic and cultural connections across continents. Despite ongoing improvements in aerospace engineering, aircraft design, and strict regulations, aviation accidents, while rare, are still a serious public safety issue due to the potential for large losses of life. According to the International Civil Aviation Organization (ICAO), the worldwide scheduled air transport fatal accident rate was about 1.11 per million departures in 2022. Every year, hundreds of fatalities occur, mainly due to high-impact crashes, post-crash fires, toxic smoke inhalation, and major structural failures. Traditional aircraft safety systems have primarily focused on protecting the aircraft itself rather than the individual passenger. Current in-flight protection methods mainly include lap seatbelts, drop-down oxygen masks, and manual crew evacuation instructions. These measures leave passengers very exposed to various threats in the critical moments after an impact. To fill this urgent gap in aviation safety, this paper proposes designing and prototyping the "SkyPod," an autonomous, deployable protective capsule system that integrates into current commercial aircraft seating. The SkyPod acts as a separate, modular protective unit that absorbs crash impact energy, protects passengers from deadly fire and smoke, and offers buoyancy during emergency water landings. The proposed system uses a multi-sensor array that includes MPU-6050 6-axis accelerometers and gyroscopes along with BMP280 barometric pressure sensors. This combination involves real-time data processing to detect upcoming crash events. When a crash trajectory is confirmed, the system's microcontroller activates a fast inflation mechanism using compressed CO2 cartridges. In less than two seconds, the system surrounds the passenger with a rigid, thermally insulated, fire-resistant shell made from Nomex and Kevlar laminates. This capsule absorbs and redistributes kinetic energy through honeycomb structures and elastomer

dampers, blocks dangerous cabin debris, and ensures breathable air using integrated HEPA and activated carbon filters. This review outlines the design framework, hardware and software requirements, practical engineering applications, testing methods, and future trends needed to shift passenger safety from a reactive evacuation mindset to proactive, intelligent encapsulation.

**Key Words:** SkyPod, aircraft passenger safety, deployable survival capsule, real-time embedded systems, crash survival, multi-sensor fusion, passenger protection, IoT monitoring, energy absorption, aviation engineering, ESP32 microcontroller, autonomous safety.

## 1. INTRODUCTION

Aviation is one of humanity's greatest achievements. It combines mechanical innovation, computer technology, and human effort to make the dream of flight a reality. Modern air travel features top-tier engineering, where physics, data science, and safety management come together to ensure air travel is one of the safest ways to move people [2]. Navigation systems, strict airworthiness rules, and well-trained flight crews contribute to this perception. However, when aircraft accidents occur, they can lead to serious injuries or tragic loss of life [4].

Statistical studies and historical crash investigations show that a significant number of aircraft crashes are technically "survivable" [6]. In many cases, passenger deaths do not occur from the initial impact but from other environmental and physical factors. These factors include high G-forces on the body, rapid fires after the crash, inhaling smoke, passenger cabin collapse, and drowning or hypothermia after emergency water landings. In a severe accident, the sudden stop creates extremely high G-forces that can cause fatal damage to internal organs, the spine, and the skull. Additionally, fires fueled by aviation fuel spread quickly inside the aircraft, creating toxic smoke that can

cause passengers to lose consciousness before they can evacuate [12].

The main issue lies in how conventional aircraft safety systems are designed. They mostly focus on keeping the entire aircraft intact and offer little independent protection for passengers. A standard passenger seat is fixed to the floor. During an accident, the force of the impact is transferred directly through the seat to the passenger. While seatbelts help during minor turbulence, they cannot protect against forces from multiple directions or falling debris. Drop-down oxygen masks are only designed for high-altitude emergencies and do not filter or supply oxygen during a fire on the ground.

Current evacuation protocols also increase passenger vulnerability. Safety regulations state that an aircraft must be fully evacuated within 90 seconds, but these rules often don't apply to real-world crash situations. After a severe impact, passengers frequently experience disorientation, injury, or become trapped by structural elements that have collapsed, along with jammed exits. Panic and low visibility due to dense, toxic smoke drastically reduce the effectiveness of evacuation procedures. As a result, the window for survival closes quickly, highlighting the shortcomings of reactive safety measures that rely solely on passenger mobility and crew instructions.

Fortunately, recent advancements in engineering offer a chance to address these systemic weaknesses. The rapid miniaturization of Internet of Things (IoT) sensors, the increase in processing power of embedded microcontrollers, and the development of ultra-light, thermally resistant aerospace materials have come together to enable individualized active protection. The idea of a deployable survival capsule was once limited to military aviation, like heavy and costly ejection seats, and was often dismissed for commercial flights due to weight and space issues. Now, real-time sensor fusion algorithms and high-speed pneumatic actuation allow for the creation of compact, intelligent systems that can make life-saving interventions automatically.

The SkyPod Project aims to close this dangerous gap by providing immediate, personalized protection in an unavoidable crash. The main goal of the SkyPod system is to focus on saving human lives rather than the aircraft itself, even if the aircraft experiences catastrophic failure. By creating a self-contained environment for each passenger, the SkyPod ensures that a person's survival does not depend on the overall condition of the aircraft cabin [10][13].

## 2. Structural Literature Review

The study on deployable protection system, enhanced materials, computing paradigms, and aviation safety indicates that there is a huge gap in technological and conceptual capacity in individual passenger survivability. In this section, significant literature and approaches that exist that are related to the proposed SkyPod system are structured.

### A. Examination of the Current Aviation Safety Systems :

The present day commercial aviation safety is the main focus on accident prevention and minimizing the survivability of accidents [2]. Likewise, modern aircraft seating provides lap belts (and sometimes shoulder belts in high-fare classes), which will protect against turbulence but have very little protection in high impact collisions. Since 2009, the FAA made it a requirement that all new commercial aircrafts seats should resist 16 G forward impact that is dynamic. Nevertheless, structural survivability of 16Gs does not imply that the passenger cannot suffer a severe whiplash injury, an irreparable traumatic brain injury by striking the seat in front of that person, or injury-inducing cuts by flying natural cabin debris [6]. The systems of oxygen that are already in use suit well in depressurization events that occur at cruising altitudes but are in essence of no use in post-crash fires due to the fact that they offer no filtration mechanisms to clean the carbon monoxide and the other poisonous particulates. New technology such as aircraft airbag systems (built into the seatbelts of bulkhead rows) cuts down on the level of injury to the head in forward impacts but provides zero protection to the environment, thermal insulation, and multi-axis security against crushing forces on the sides.

### B. Automotive Safety Adaptation difficulty :

In the past history, any effort to directly transfer automotive airbag technology to aviation had died miserably and in very harsh terms. The pulses generated by automotive airbags are very short (a few hundred milliseconds) in duration, and of high G (numerically in the range of tens of thousands), compared to the long-period, multi-impact character of an aircraft crash descending a runway. Moreover, the weight and space penalty costs of implementing large-scale airbags design in automotive style render them unfeasible among airlines that are concerned with extreme fuel economy. Most importantly, sensor systems optimized to detect terrestrial cars more often than not falsely accept measurements due

to the distinct vibrational signature, extreme turbulence or rough landings common to an aviation environment [19].

### **C. Deployable Protection Systems Research :**

Advanced defenses used in the military like zero-zero ejection seats have a survival rate that is extremely high to the pilots of fighter planes, though it is absolutely impossible in the commercial airline industry. Military adaptations are impossible because of the extreme cost, great weight, the complicated pyrotechnic maintenance operations involved and the sheer physical impossibility to safely jettison hundreds of passengers at once. Previous studies of commercial escape capsules, with whole cabin segments being broken off, demonstrate that massive encapsulation is theoretically feasible, but has traditionally led to aircraft which are too heavy and aerodynamically disruptive and too complex. The more recent use of inflatable structures to create the space objects (like structures invented by NASA to be deployed as orbital habitats) gives new ideas on the use of the lightweight, rigidizable airbeams, so that the rapid pneumatic deployment scheme of the SkyPod directly follows [13].

### **D. Safety-Critical Systems Edge Computing in Real-Time:**

The weakness of traditional avionics in aircraft is that it relies on centralized processing. Localized safety systems will break down in case of central flight computer or the main communication bus being cut during the first impact. The recent literature has underlined the fact that edge computing is important when dealing with real-time engineering applications that must be very safe and which demand real time responses. By moving the computational processing of data taken without leaving the source breadth of the sensor nodes installed in each individual SkyPod seat, engineers are able to remove delays in the backhaul networks over long-distance distances. The loose, edge-processing design offers almost zero latencies, making the ESP32 microcontroller not only capable of running intricate Kalman filter commands and the sub-2-second decision required when you need to perform physical interventions that were life-saving but also effective in near-complete network outages, or upon complete loss of the main aircraft power supply.

### **E. Advanced energy absorption and Thermal Materials :**

Portable survival capsules have to strike a balance between extreme structural rigidity and rigid weight requirements of aerospace. The literature of advanced composite structures points at the effectiveness of the

Carbon Fiber Reinforced Polymers (CFRP) and aluminum alloy support frames in achieving such a vital strength-to-weight ratio [10]. In order to reduce the spread of harmful kinetic energy, studies favor the use of cellular solids tremendously. Honeycombs crash structures, hydraulic shock absorbers, and elastomer dampers are components that successfully control deformation, which is done systematically before peaking G-forces hit the occupant spine [11]. Besides, the protection against the aviation fuel fires that propagate at a very high speed to 800degC also demands extremely specially designed materials to shield people inside. Recent aerospace fire-protection research recommends the incorporation of ceramic-based thermal insulation and ablative intumescent substances and fire-resistant composite sheets in order to retain a survivable internal capsule temperature [12].

### **F. Certification and Regulatory Landscape :**

The regulated environment in the aviation industry, including the FAA and the EASA, pays much attention to the prevention of accidents and controlled evacuation (e.g., 90 seconds evacuation rule). The standards of certification require a high degree of reliability and almost zero false activation [3]. Since the airlines have been working on low margins, they are historically more othered to lean preventative rather than the heavy style of protection (such as improved radar or predictive maintenance). Therefore, the SkyPod is tailored-made to address these arduous regulatory challenges through weight considerations (less than 15 kg per seat), redundant sensor fusion to remove the false positives, and aerospace-grade composite materials [2], [10].

### **3. History and Evolution of Aviation Safety**

To better understand why and when the SkyPod system is necessary, it is critical to identify the evolution of aviation safety schemata in accordance with four distinct phases of its history.

#### **A. Phase 1: The Mechanical Era (1910s-1930s) :**

Planes at the beginning of the 20<sup>th</sup> century were primitive made out of wood and cloth having little redundancy of the mechanisms and a very low level of reliability. The rate of accidents was really high and was mainly attributed to disastrous engine malfunction, structural ripping, weather insecurities and poor visual navigation. The pilot could only rely on his mechanical ability and chance to stay safe.

## B. Phase 2: Institutional Structural Era (1940s-1960s)

International aviation safety was to be systematized with the foundation of international civil aviation organization (ICAO) in 1944 and the Federal Aviation Administration (FAA) in 1958 [1]. These agencies came up with stringent guidelines governing the training of pilots, maintenance and operating controls. The advent of such technologies as efficient jet-powered aircraft engines, pressurized aluminum cabins, and the radar types of the navigation enhanced aircraft performance and lower accident rate manifold [2].

## C. Phase 3: The Digital and Predictive Age (1980s-2010s) :

The philosophy of aviation safety shifted away toward reactive and mechanical remedies of safety, to systemic and prospective approaches. The analog cables were substituted with digital fly-by-wire controls converting the input of the pilots into accurate electronic signals. Embedded microprocessors started controlling thousands of aircraft parameters in every one second to guarantee best performance. Other systems, such as the Traffic Collision Avoidance System (TCAS) and Enhanced Ground Proximity Warning System (EGPWS) ensured that mid air collisions and controlled-flight-into-terrain (CFIT) injuries were barely recorded. However, the cabin security of passengers did not increase [6].

## D. Phase 4: Passenger-Centric Survivability Era (Present and Future) :

Although the system of predicting problems in Phase 3 is predictive, accidents are possible because of severe weather, because of some mechanical failures which cannot be restored or because of a human factor [5]. The present stage requires a transition into the domain of active survivability - when embedded computer engineering is applied to save the lives physically on board a crash plane. As the future of this period, the SkyPod will utilize IoTs, microcontrollers and innovative materials to develop self-governing and personalized safety systems [13], [17].

## 4. Architecture and Operational Flow

The SkyPod system is designed in a very integrated and modular framework based on real-time execution and distributed intelligence. The system has complicated mechanical, thermal, pneumatic and electronic subsystems that operate in perfect coordination to provide the necessary functionality in the turbulent nature of an aircraft disaster.

## A. The Multi-layer Protective Framework :

The physical capsule has been designed so as to dispense the forces of impact evenly so that the passenger is not deformed locally and is not exposed to external threats.

1. Protective Outer Shell: The main shield is made out of Carbon Fiber Reinforced Polymer (CFRP) with a support framework that consists of light weight aluminum alloy and Nomex-Kevlar laminate. The high strength-to-weight ratio is achieved by this variable-thickness design which is offering the finest resistance density to penetration by cabin debris with providing lightweight structure [10].

2. Energy Absorption System: This sub-system is the one that transforms sudden kinetic impact energy into regulated mechanical deformation, greatly decreasing the maximum G-forces which are transmitted to the human body. It has hydraulic shock absorbers, dampers made out of elastomers, and aerospace honeycomb crash structures embedded to its bottom and back of the seat. Design Researches have been able to cut peak G-forces by 70% with occupant-limited forces to less than survivable human levels (under 25G) [11].

3. Fire and Smoke Protection Elements: The fires that occur after the crash burn in extreme temperatures. The SkyPod employs thermal insulation layers and fire resistant composite sheets that are made using ceramic which can hold an internal capsule at a temperature less than 60degC at least 60 seconds even under external temperatures above 800degC. It has a smoke sealed inner lining which together with the inbuilt HEPA filtration system and activated carbon filtration system can guarantee breathable air and prevention of toxic gas inhalation [12].

4. Flotation and Water Survival Characteristics: To be sure that the SkyPod will keep floating during water landings, the bottom will be fitted with inflatable air bladders, automatic inflating valves, and water detectors to enable the detached pod to act as a large floating life raft.

## B. Intelligent Distributed and Electronic Control :

The brain of the SkyPod is an autonomous computer and it is based on an advanced embedded system, which will handle environmental and kinetic data with almost no latency.

1. Microcontroller Unit (MCU): The Central Processing Unit is an ESP32-WROOM-32D control system with a 2-core 32-bit LX6 processor that is based on a 240 MHz processing speed [17]. Core 0 is specifically devoted to acquisition and processing of sensor data in high-speed real-time, whereas Core 1 is used to manage the whole system, check redundancy, and communication. It has FreeRTOS as its control of precise scheduling of real-time tasks and has hardware-based watchdogs to ensure the system does not lockup [18].

2. Sensor Network (Perception Layer): The inertial measurement is based on a state-of-the-art MPU-6050 6-axis unit, capable of combining a very sensitive 3-axis accelerator (+-16g range), and a 3-axis gyroscope (+-2000deg/sec range) [15]. This will enable the system to precisely trace on abrupt turns in orientation and devastating deceleration trends. There is also an ADXL345 accelerator sensor that acts as the second option in case of imbalance and crash detection and it has an I2C communication protocol. Environmental condition is observed through BMP280 barometric pressure sensor (Sudden cabin depressurization or a rate of abnormal descent) [16], as well as much detailed temperature sensor and photoelectric smoke sensor.

3. Power Supply Components: The system should have been able to work without being linked to the main electrical system of the aircraft, which in most cases, malfunctions in case of an accident. Every SkyPod has a rechargeable 3.7V 3000mAh Lithium-Polymer battery, optional back-up battery, and inherently accurate power management circuitry providing unlimited operating capacity, and reporting system health.

4. Cloud and IoT Integration: In the normal operation and maintenance, an integrated IoT structure is used and employs the ThingSpeak cloud platform. The ESP32 transmits the real-time diagnostic data, which enables the airline maintenance personnel to see the graphical displays of sensor health, battery parameters, and calibration conditions without checking the seats manually.

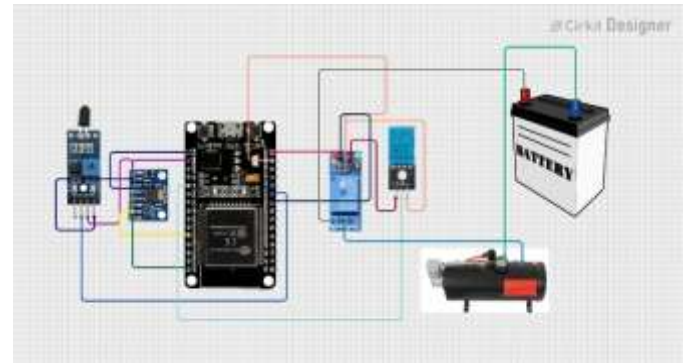


Fig -1: SkyPod Circuit Diagram.

### C. Rapid Development and Radical Innovation.

The most important consideration of passenger protection is the rapid deployment, which involves the prompt and timely gas dynamics.

1. High-Speed Pneumatic Inflation: The system makes use of the optimized CO2 cartridge deployment bank of 4 to 6 standard cartridges of 12g. The even distribution of gases and active pressure accumulation in the structural airbeams of the capsule is guaranteed by the computational fluid dynamics modeling [13], [14].

2. Actuation Mechanism: The high-flow solenoid valves release the compressed gas on sub-10 milliseconds of response time. These are necessitated by MOSFET based driver circuits connected directly to the ESP32. The use of redundant valves will make the system functional even in the case of failure of one of its components [14].

3. Deployment Sequence Timing: The system is based on a well-optimized, gradual process of inflation. The first stages of rapid pressurization of the primary protective ribs are stabilization of pressure, and thereafter it is fully rigid encapsulation against the occupant and seat restraints within a short period less than 2 seconds after initial detection.

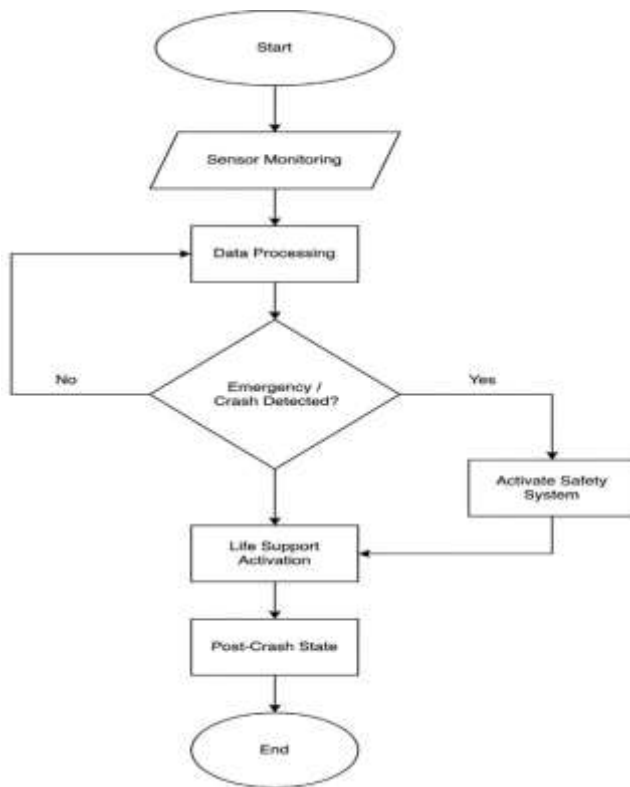


Fig -2: SkyPod UML Diagram.

**D. Operational flow and algorithm Process :**

SkyPod is effective because of its entirely autonomous nature of operation and so needs no human intervention to operate and hence it will eliminate human panic in the survival equation.

1. Normal Operation (Stage 1): On normal flight operation, the SkyPod will not be deployed at all, and it will act as a typical, comfortable plane seat.
2. Emergency Detection (Stage 2): Data at the sensor rate  $\geq 100\text{Hz}$  is sampled continuously. The program makes use of Complementary and Kalman Filters to minimize the noise and good approximation of the state of the aircraft [7], [8]. The emergency activation logic is based on weighted decision matrix requiring threshold infraction across a variety of sensor domains (e.g., extreme negative acceleration and active loss of altitude) to happen simultaneously [9]. There is a confidence-scoring algorithm that will not falsely trigger in the violent but non-deadly turbulence.
3. Pod Activation (Stage 3): After breaching the threshold, MCU signals firing signal. SkyPod has a five-point safety harness, which tension-locks, drawing the passenger in the safest anatomic position as CO<sub>2</sub> solenoids discharge.

4. Encapsulation and Impact (Stage 4): 2-minutes later the outer shell will inflate and lock. The outer shell takes up the mechanical shock during the physical impact whereas the base energy absorption system curbs the transmission of the G-forces.

5. Post-Crash Survival (Stage 5): This is just the point when the pod completely seals the passenger against the outside fire and smoke. There are internal emergency oxygen cylinders, which are activated, and high-intensity LED lights are turned on and an Emergency Locator Beacon (ELT) starts sending GPS positions to guide a rescue mission.

**5. System Implementation and Methodology**

The Systems engineering approach to the construction of the SkyPod prototype takes a heavily structured and multi-phase approach that integrates agile hardware development with the basic tenets of rigorous safety-critical systems design technology [20].

**A. Phase 1: System Requirement and Analysis :**

The phase includes an extensive examination of the aviation standards of safety (FAA/EASA), and an examination of the reports of the accident investigations (NTSB) to find out the most significant protection parameters [3], [4]. The quantitative performance metrics are strictly defined, i.e. the <2 seconds deployment time, <60degC initial thermal requirement.

**B. Phase 2: System Design and Architecture :**

The design of Electronic systems will involve the design of a 4-layer PCB layout to provide maximum signal integrity to the ESP32 and I2C sensor arrays. Mechanical system design entails developing 3D CAD models of the entire seat assembly in Fusion 360 with finite element analysis (FEA) being used to assess the integrity of the Kevlar/CFRP structures to simulated crash forces.

**C. Phase 3: Prototyping and Integration :**

As part of hardware fabrication, the PCBs are additionally assembled and the component verification is performed, as is the manufacturing of the mechanical capsule through rapid prototyping and special composite sealing processes. There is firmware development written in C++ on the Arduino IDE/ PlatformIO implementing low-level drivers, the FreeRTOS task model, and the advanced Kalman filter algorithms on the MPU-6050 [8], [15].

#### **D. Phase 4: Extensive Testing and Length of validity :**

Intense laboratory trials are done without endangering human beings. This incorporates the G-force attenuation evaluation with the prototype by holding the prototype off of known heights through controlled drops, and testing of the shell to thermal insulation by placing the shell in front of controlled heat sources (800degC), as well as high-speed filming to determine the timeliness of inflating the sub-2-second. False activation testing is when the sensors are subjected to high vibration and possible turbulence profiles to make sure that the confidence-scoring algorithm avoids successful deployment under false pretences.

#### **6.Applications in Real-Time Engineering :**

The SkyPod technological support is a unique platform technology that can be applied to a wide spectrum of high-stake transportation sectors in which the extent of structural failure is a critical cause of extreme bodily outcomes.

1. Commercial Aviation Implementation  
Commercial jet liners are the target market predominantly outside in regional jets to widebody transcontinental carriers. It would first be applied to new aircraft types when manufactured by individual manufacturers (such as Boeing or Airbus) and in the case of retrofitting to existing airlines, modular options would be developed to be implemented [3].

2. Business, Private and VIP Aviation: It is the best initial adopters as it has a superior value of money per flight, higher cabin flexibility, and less regulatory obstacles of a personalized interior. The SkyPod could also be sold as a high quality luxury safety measure. Moreover, Head of State transport aircrafts might also include the technology to combat both head-on collisions and local threats to the maximum number of occupants.

3. Military, Search and rescue: The SkyPod is much more protective to troops and essential people aboard military transport aircraft in the event of risky tactical action. Also, the opportunity to be incorporated into specialized Search and Rescue (SAR) aircraft enables the team to act in the situation of severe weather conditions where the threat of controlled-flight-into-terrain is critical.

4. Urban Air Mobility (UAM) and eVTOL: With the growth of the market of electric Vertical Takeoff and Landing (eVTOL) aircraft and air taxis, safety of the

passengers in urban spaces with low altitude is highly important. The high rate of deployment in the SkyPod renders it very appropriate in these new markets where the glide-recoveries cannot take place. It too can be scaled to suborbital space tourism vehicles to deal with the extreme safety issues of the volatility of launch and re-entry.

5. Ground Transportation Expansion: The core technology behind the SkyPod, which is sensor fusion in a hurry, energy absorbing material, deployable protection can be directly applied to high speed rail systems to cushion passengers against derailments of speeds over 300km/h. It provides a reconsideration of occupant safety in self-driving vehicle types, whereby the unconventional seat layout (e.g. passengers facing one another) makes traditional dashboard airbags ineffective [19].

#### **7. Drawbacks, Challenges, and Mitigation**

#### **7. Drawbacks, Challenges, and Mitigation :**

Although the theoretical approach is sound and would be of a great benefit, the mechanical aspect of injectable protective capsules within the walls of commercial planes presents dreadful engineering, logistical and operation obstacles that require a good mitigation plan.

#### **A. Limitations of Weight and Space :**

Weight is the greatest constraint in terms of aerospace engineering. The introduction of much bulk to an aircraft significantly decreases its fuel usage and decreases carrying capacity. This reason was the main one that caused previous attempts to add heavy escape systems. Its mitigation strategy: SkyPod is limited to a total weight of less than 15kg per seat. This is done by use of ultra-light carbon fiber reinforced polymer and substitute of conventional heavy metal seat frame with advanced structural composites. Moreover, the volume increase is restricted to a minimum of 20 percent compared with standard seats thus the airlines do not need to go on having fewer passenger rows in order to accommodate the system.

#### **B. The Risk of False Activation :**

Airlines are petrified of safety systems that may implement unintentionally. When a SkyPod is unleashed in a high turbulence, there is a chance that it may cause panic, maim an out of position passenger and will result to a costly emergency landing. Mitigation: It involves the use of a highly strict, intelligent multi sensor fusion algorithm. The data sent to the accelerometers, gyroscopes, and barometers can then be compared using conjunction with

a Kalman Filter to determine the difference between a violent air pocket (turbulence) and an unrecoverable dive [7], [8]. System logic requires repeated threshold crossings of at least 100-200 milliseconds before activation in order to maintain a target rate of less than 0.01 false positive [9], [19].

### C. Hurdles to Regulation and Certification :

The most regulated industry is the aviation sector in the world. The focus of current certification (such as that of FAA CS-25 specifications) is nearly completely on safety in air (reducing the possibilities of crashes), rather than explosive gas implemented systems in the cabin during one [3]. Mitigation: A phased certification program will be used in the engineering plan, which begins with weaker applications (such as cargo flight crews or the military transport) to establish a baseline of reliability data. Continuous proactive interactions with the regulatory bodies are needed to provide new certification routes to active survivability technologies.

### D. Power Management and Maintenance:

Logistically, it is a challenge to control the power flow of hundreds of autonomous IoT devices, guaranteeing their maintenance and being expensive to handle without huge expenses in labor. Mitigation: SkyPod has a personal Li-Po battery system that is rechargeable. The systems are configured to automatically present its diagnostic health (battery level, sensor status, CO<sub>2</sub> pressure) through Wi-Fi/Bluetooth capability using ESP32 to a central cloud dashboard through ThingSpeak to solve maintenance costs. When a component does malfunction in their self-tests, service is notified on the spot, with no need to do any form of physical inspection as a seat-by-seat inspection.

### 8.Future Trends and the Road Ahead :

Since the basic requirement to have a very strong resilient passenger transportation grows, protective systems such as the SkyPod are most likely to be upgraded as a reactive hardware to a very smart, predictive ecosystem.

1. AI-Based Crash Detection: Future generations will strive to incorporate deep machine learning algorithms which have been trained on decades of flies worldwide. In lieu of responding to the extreme G-forces when they occur, the system will identify the more indistinct multi-variable indications of a stall or mechanical failure imminent, preempting a crisis by several seconds prior to it turning into physically inevitable [2], [9].
2. Multi-Source Integration Swarm Intelligence: Future SkyPods will not act alone. The capsules will

create an intra-cabin IoT swarm using ultra-low latency 6G and communication computer networks and communicate with each other and the main flight computer of the aircraft. They will combine the sensor data onboard with the external telemetry (weather radar, TCAS) to pre-plan the cabin to its best depending on the angle and severity of the particular threat [7].

3. Smart Materials and Nanotechnology: Materials science of the capsule will develop into the implementation of nanomaterials and intelligent polymers with variable rigidity. Such materials may be gentle and nice to the passengers to sit in while flying but instantly turn as tough as steel when exposed to electric charge in case of a crash pattern. An example of this would also be the self-healing structures that would automatically determine punctures caused by impacting debris.

4. Green Edge Computing: With sustainability being a top priority, future SkyPods will have energy-harvesting sensors that operate either by thermal or kinetic energy produced by the customers, eliminating the use of the lithium batteries and decreasing the flowing carbon footprint of the digital infrastructure.

### 9. CONCLUSIONS

The SkyPod project represents a crucial shift in how the aerospace industry views and designs aviation safety. For decades, the industry believed that preventing crashes through strong structures and navigation aids was enough. However, this review shows that traditional aircraft safety systems can no longer be the only defense for passengers against the unpredictable scenarios of high-speed impacts, rapid post-crash fires, and toxic smoke hazards [6].

By developing and incorporating a multi-layer protective capsule into the aircraft seating system, the SkyPod connects high-speed digital intelligence with real human safety. The system uses real-time embedded microprocessors, advanced inertial sensor fusion, and quick CO<sub>2</sub> pneumatic deployment to autonomously create life-saving encapsulation in under 2 seconds. The design is modular, ensuring that each passenger gets personalized protection against dangerous G-forces, crushing debris, and unbreathable environments. This fundamentally changes the math around crash survivability [6], [11].

While significant engineering challenges, such as aggressive weight reduction, navigating uncertain regulatory certification processes, and ensuring complete protection from false positives, are still barriers to widespread commercial use, the technical foundation laid

by this prototype is strong. As aerospace engineering increasingly intersects with intelligent computer systems and materials science, autonomous, personalized technologies like the SkyPod will become necessary. Ultimately, this system enables engineers to create survival mechanisms that can make quick, intelligent decisions faster than a human can, marking the start of an era where optimal human protection is integral to modern air travel [20].

### ACKNOWLEDGEMENT

We would like to express our profound gratitude to our project mentor and Head of the Computer Engineering Department, Dr. Prakash Shinde, for his continuous support, valuable technical guidance, and constructive feedback throughout the research and development phases of the SkyPod project. His expertise and encouragement have been instrumental in shaping this paper.

### REFERENCES

- [1] International Civil Aviation Organization (ICAO). (2023). Safety Report 2022. Montreal, Canada: ICAO.
- [2] Federal Aviation Administration (FAA). (2021). Aviation Safety Information Analysis and Sharing (ASIAS) System Overview. Washington, D.C.: U.S. Department of Transportation.
- [3] European Union Aviation Safety Agency (EASA). (2020). Certification Specifications for Large Aeroplanes (CS-25). Cologne, Germany: EASA.
- [4] National Transportation Safety Board (NTSB). (2010). Aircraft Accident Report: Loss of Control on Approach, Colgan Air, Inc. Operating as Continental Connection Flight 3407. Washington, D.C.
- [5] BEA (Bureau d'Enquêtes et d'Analyses pour la sécurité de l'aviation civile). (2012). Final Report on the accident on 1st June 2009 to the Airbus A330-203.
- [6] National Aeronautics and Space Administration (NASA). (1988). Aircraft Accident Survivability: A Historical Overview and a Look to the Future (NASA TM-100459).
- [7] Valenti, R. G., Dryanovski, I., & Xiao, J. (2015). A Linear Kalman Filter for MARG Orientation Estimation Using the Algebraic Quaternion Algorithm. *IEEE Transactions on Instrumentation and Measurement*.
- [8] Euston, M., Coote, P., Mahony, R., Kim, J., & Hamel, T. (2008). A Complementary Filter for Attitude Estimation of a Fixed-Wing UAV. *IEEE/RSJ International Conference on Intelligent Robots and Systems*.
- [9] Thrun, S., Burgard, W., & Fox, D. (2005). *Probabilistic Robotics*. MIT Press.
- [10] Mouritz, A. P., Gellert, E., Burchill, P., & Challis, K. (2001). Review of advanced composite structures for naval ships and submarines. *Composite Structures*, 53(1), 21-42.
- [11] Gibson, L. J., & Ashby, M. F. (1997). *Cellular Solids: Structure and Properties*. Cambridge University Press.
- [12] Tate, J. S., Akinola, A. T., & Kabakov, D. (2019). Ablative and Intumescent Materials for Fire Protection in Aerospace Applications. *Journal of Aerospace Engineering*.
- [13] Cadogan, D., Smith, T., & Lee, R. (2002). Inflatable and Rigidizable Structures for Space Applications. *IEEE Aerospace Conference Proceedings*.
- [14] Hauptmann, P., & Hütter, R. (1998). *Pneumatic Drives: System Design, Modelling and Control*. Springer-Verlag.
- [15] InvenSense Inc. (2013). MPU-6000 and MPU-6050 Product Specification. Revision 3.4.
- [16] Bosch Sensortec. (2015). BMP280 Digital Pressure Sensor Datasheet.
- [17] Espressif Systems. (2022). ESP32 Series Datasheet. Version 4.4.
- [18] FreeRTOS.org. (2022). FreeRTOS Real-Time Kernel (RTOS) Reference Manual.
- [19] International Organization for Standardization (ISO). (2018). ISO 26262: Road vehicles Functional safety.
- [20] NASA. (2007). *Systems Engineering Handbook*. NASA/SP-2007-6105.