

Smart Study Tracker with Class Room Collaboration

Mentore :- Mr. Manish Vasant Salvi

Author :-

Mohammed Ansari

Shakib Khan

Samir Khan

Yvuraj Shing

KEYWORDS

Study Tracker, Artificial Intelligence, Learning Analytics, Classroom Collaboration, Academic Performance Prediction, MERN Stack, FastAPI, Educational Technology, Personalized Learning, Student Productivity System

ABSTRACT

In modern academic environments, students rely on multiple fragmented tools for managing coursework, tracking study progress, and collaborating within classrooms. Platforms such as classroom management systems, personal note-taking tools, and productivity trackers operate independently, resulting in inefficient workflows, lack of centralized data, and minimal insight into individual learning patterns. This fragmentation reduces students' ability to effectively monitor their academic performance and limits the potential for personalized learning.

To address these limitations, this paper proposes a Smart Study Tracker with Classroom Collaboration System, an integrated academic platform designed to unify study tracking, assignment management, classroom interaction, and intelligent analytics within a single ecosystem. The system enables students to monitor their study habits, manage assignments, participate in classroom discussions, and receive personalized recommendations based on their academic behavior.

The proposed system is built using a MERN (MongoDB, Express.js, React.js, Node.js) stack for the frontend and backend infrastructure, combined with a FastAPI-based microservice to handle artificial intelligence functionalities. The platform incorporates multiple intelligent modules, including an AI-powered academic chatbot for instant query resolution, a recommendation engine for personalized study suggestions, and a predictive analytics module that evaluates student performance trends using historical data.

Additionally, the system includes a structured classroom collaboration layer that allows educators to create courses, assign tasks, monitor student progress, and analyze engagement metrics. The analytics dashboard provides visual insights into performance indicators such as study consistency, assignment completion rates, and subject-wise proficiency levels. Machine learning models are integrated to identify learning gaps and suggest targeted improvements.

The implementation emphasizes scalability, real-time interaction, and modular architecture, ensuring that the platform can adapt to diverse academic environments. Experimental observations and simulated usage scenarios indicate that the proposed system improves student engagement, enhances productivity, and supports data-driven academic decision-making. The integration of artificial intelligence further enables adaptive learning experiences tailored to individual student needs.

1. INTRODUCTION

In modern education systems, students rely on a wide range of digital tools to manage their academic activities, including classroom platforms, productivity applications, and personal study trackers. While these tools aim to improve efficiency, they operate in isolation, resulting in fragmented workflows and scattered academic data. Students are often required to switch between multiple platforms for assignments, notes, scheduling, and collaboration, which leads to cognitive overload and reduced productivity.

A critical limitation of existing systems is the lack of integration between study tracking, classroom interaction, and performance analysis. Most platforms focus on a single dimension of academic activity. For example, classroom systems emphasize assignment distribution, while productivity tools focus on task organization. However, none of these systems provide a unified view of a student's academic behavior or learning progress.

Furthermore, current tools lack context-aware intelligence. They do not analyze how students study, identify weak areas, or provide adaptive recommendations. As a result, students are left without actionable insights into their performance, making it difficult to optimize their learning strategies. The absence of intelligent feedback mechanisms prevents the transition from passive tool usage to active, data-driven learning.

Another major issue is the limited support for collaborative learning environments. While some platforms enable communication, they do not integrate collaboration with performance tracking or personalized learning. This disconnect reduces the effectiveness of peer learning and instructor guidance.

To address these challenges, this paper proposes a Smart Study Tracker with Classroom Collaboration System, an integrated platform that combines study tracking, assignment management, classroom collaboration, and artificial intelligence-driven analytics. The system is designed to centralize academic activities, provide real-time insights, and support personalized learning experiences through intelligent modules.

2. LITERATURE REVIEW

Various tools and platforms have been developed to enhance academic productivity and classroom management. However, each system addresses only a specific aspect of the learning process, leading to several functional and architectural limitations.

Google Classroom is widely used for managing assignments, announcements, and classroom communication. It provides a structured environment for teachers to distribute content and monitor submissions. However, it lacks mechanisms for tracking individual study patterns, analyzing learning behavior, or providing personalized feedback. The system primarily focuses on administrative tasks rather than cognitive or performance-based insights.

Notion is a flexible productivity tool that allows users to create notes, databases, and task management systems. While it supports customization, it does not include domain-specific intelligence for academic use. It does not analyze study data, generate recommendations, or provide insights into academic performance. Its effectiveness depends heavily on manual setup and user discipline, which limits scalability for structured educational environments.

Trello is a task management tool based on a Kanban-style workflow. It is useful for organizing tasks and tracking progress visually. However, it does not support curriculum structuring, academic analytics, or intelligent recommendations. It treats academic tasks the same as general tasks, ignoring the complexity of learning processes and subject-specific requirements.

Artificial intelligence tools such as ChatGPT provide powerful capabilities for content generation, doubt solving, and conceptual understanding. However, they function as standalone assistants rather than integrated academic systems. They do not track long-term student performance, analyze study habits, or provide structured academic planning. Their lack of integration with classroom systems limits their effectiveness in continuous academic monitoring.

Recent research in educational technology highlights the importance of learning analytics, adaptive systems, and personalized education models. Studies suggest that systems integrating data collection, behavioral analysis, and intelligent feedback can significantly improve student engagement and performance. However, most existing implementations focus either on analytics or interaction, rather than combining both within a unified platform.

The gap identified from existing literature is the absence of a comprehensive system that integrates classroom management, study tracking, collaboration, and artificial intelligence-driven insights. This paper aims to address this gap by proposing a unified architecture that combines these components into a single, scalable solution.

3. PROBLEM STATEMENT

Despite the widespread availability of digital tools in education, students continue to face significant inefficiencies in managing their academic workflows. These inefficiencies stem not from the absence of tools, but from the lack of integration, intelligence, and structured analysis across existing platforms.

One of the primary challenges is the absence of a centralized academic ecosystem. Students are required to use multiple disconnected platforms for classroom interaction, note-taking, task management, and study tracking. This fragmentation results in scattered data, making it difficult to maintain consistency and gain a holistic view of academic progress.

Another critical issue is the lack of data-driven performance insights. Existing systems do not analyze student behavior over time, such as study duration, frequency, topic coverage, or performance trends. Without such analysis, students are unable to identify weak areas, track improvement, or adjust their learning strategies effectively.

Furthermore, there is no proper integration between curriculum structure and learning tools. Academic platforms do not align study activities with syllabus progression, resulting in unstructured learning patterns. Students often lack clarity on what to study, when to study, and how their efforts align with academic goals.

The inability to track study consistency and engagement levels further limits academic growth. Most tools do not measure parameters such as focus duration, study intervals, or completion rates, which are essential for understanding learning efficiency.

In addition, existing platforms fail to support adaptive and personalized learning experiences. The absence of intelligent systems that can recommend study plans, generate assessments, or provide contextual assistance reduces the effectiveness of digital learning environments.

As a result of these limitations, students experience reduced productivity, poor time management, and a lack of awareness regarding their academic performance. This ultimately impacts their learning outcomes and overall academic success.

4. PROPOSED SYSTEM

To address the identified challenges, this paper proposes a Smart Study Tracker with Classroom Collaboration System, designed as a unified, intelligent platform that integrates academic management, collaboration, and data-driven learning analytics.

The system is composed of multiple interconnected modules, each responsible for a specific aspect of academic workflow, while collectively contributing to a centralized and adaptive learning environment.

1. Curriculum Management Module

This module structures academic content based on departments, courses, and semesters. It allows educators to define syllabus hierarchies, including subjects, topics, and subtopics. The module ensures that all study activities and assessments are aligned with the curriculum, enabling students to follow a structured learning path.

It also supports dynamic updates, allowing institutions to modify course content and track curriculum coverage over time.

2. Classroom Collaboration Module

This module facilitates interaction between students and educators within a digital classroom environment. Teachers can create classes, share assignments, post announcements, and monitor student submissions. Students can participate in discussions, access shared resources, and receive feedback.

Unlike traditional classroom platforms, this module integrates collaboration with performance tracking, enabling real-time monitoring of student engagement and participation.

3. Study Tracker Module

The Study Tracker Module records detailed information about students' study activities, including time spent, topics covered, and session frequency. It enables students to log study sessions manually or automatically and provides insights into their study habits.

Advanced tracking features include:

- Monitoring consistency over time
- Identifying peak productivity periods
- Tracking subject-wise study distribution

This module forms the foundation for generating meaningful analytics and recommendations.

4. AI Analytics Module

This module leverages machine learning techniques to analyze collected academic data and generate actionable insights. It evaluates parameters such as study consistency, topic coverage, and assessment performance to identify strengths and weaknesses.

Key functionalities include:

- Performance trend analysis
- Weak area detection
- Personalized study recommendations
- Predictive insights for academic outcomes

The goal is to transform raw data into meaningful feedback that supports informed decision-making.

5. AI Testing Engine

The AI Testing Engine dynamically generates assessments based on the student's current learning level and curriculum progress. It adapts the difficulty and content of questions according to previous performance, ensuring targeted evaluation.

Features include:

- Topic-based test generation
- Difficulty adjustment using performance data
- Instant feedback and scoring
- Continuous assessment for improvement tracking

This module ensures that testing is not static but evolves with the learner.

6. AI Chat Assistant

The AI Chat Assistant acts as an academic support system, capable of answering queries, explaining concepts, and assisting with problem-solving. Unlike standalone AI tools, this assistant is integrated within the platform and has access to the student's academic context.

It maintains conversation history and uses contextual data to provide more relevant and personalized responses. This enables continuous learning support rather than isolated interactions.

5. SYSTEM ARCHITECTURE

The proposed system follows a modular, multi-layered architecture designed to ensure scalability, maintainability, and efficient data processing. The architecture separates concerns across different layers, enabling independent development, deployment, and optimization of system components.

Architecture Layers

Layer Name	Description
Frontend Layer	Built using React.js, this layer provides the user interface for students and educators. It handles user interactions, data visualization, and communication with backend APIs.
Backend Layer	Implemented using Node.js and Express.js, this layer manages business logic, API routing, authentication, and communication between frontend and database.
Database Layer	MongoDB is used as a NoSQL database to store user data, study logs, assignments, and analytics records in a flexible schema format.
AI Layer	Developed using FastAPI, this layer handles machine learning models, analytics processing, recommendation generation, and chatbot functionality.

DIAGRAM 1: SYSTEM ARCHITECTURE

System Architecture Diagram

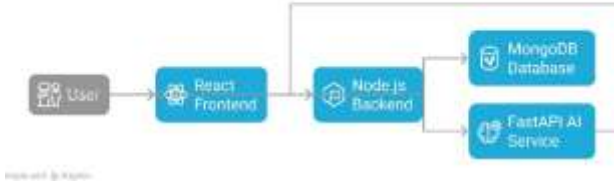


Fig. 1. System Architecture of Smart Study Tracker

Detailed Architectural Flow

The system follows a client-server architecture enhanced with an AI microservice layer:

1. The user interacts with the system through the React-based frontend interface.
2. Requests such as login, study tracking, or assignment submission are sent to the backend via REST APIs.
3. The backend processes these requests, performs validation, and interacts with the MongoDB database for data storage and retrieval.
4. For intelligent features such as analytics, recommendations, or chatbot queries, the backend forwards relevant data to the FastAPI-based AI service.
5. The AI service processes the data using machine learning models and returns predictions, insights, or generated responses.
6. The backend integrates these results and sends a structured response back to the frontend for display.

Architectural Characteristics

- **Microservice-based AI Layer:** Separating AI services using FastAPI ensures independent scaling and better performance for computational tasks.
- **Loose Coupling:** Each layer operates independently, reducing system complexity and improving maintainability.
- **Scalability:** The system supports horizontal scaling, especially for backend APIs and AI services.
- **Real-time Capability:** Integration with WebSockets (optional enhancement) allows real-time updates for classroom collaboration.
- **Security:** Authentication and authorization are handled at the backend using token-based mechanisms.

6. METHODOLOGY

The system follows a data-driven and iterative methodology to continuously monitor and improve student performance. Unlike static systems, the proposed approach focuses on collecting behavioral data, analyzing it, and generating adaptive outputs.

Step-by-Step Workflow

1. **Data Acquisition**
Users input data through various interactions, including study sessions, assignment submissions, test attempts, and classroom participation. This data forms the foundation for analytics.
2. **Data Processing and Storage**
The backend validates and processes incoming data before storing it in the database. Structured and unstructured data are organized for efficient retrieval and analysis.
3. **Behavioral Analysis using AI Models**
The AI layer processes historical and real-time data to identify patterns in study behavior, such as frequency, duration, and subject-wise engagement.
4. **Performance Evaluation**
Based on collected data, the system evaluates student performance using metrics like consistency, completion rates, and test scores.
5. **Weak Area Identification**
Analytical models detect gaps in learning by comparing expected performance with actual outcomes. This helps in identifying subjects or topics requiring improvement.
6. **Adaptive Recommendation Generation**
The system generates personalized study plans, suggesting topics, schedules, and strategies tailored to individual learning patterns.
7. **Dynamic Test Generation and Feedback**
The AI testing engine creates assessments based on the student's progress. Immediate feedback is provided to reinforce learning.

Methodological Advantages

- Continuous feedback loop for improvement
- Personalized learning experience
- Data-driven decision making
- Adaptive system behavior based on user interaction

7. IMPLEMENTATION

The system is implemented using a full-stack architecture combined with AI integration, ensuring both functional robustness and intelligent capabilities.

Technology Stack

- Frontend: React.js with Tailwind CSS for responsive and modern UI design
- Backend: Node.js with Express.js for API development and server-side logic
- Database: MongoDB with Mongoose ORM for schema modeling and data management
- Authentication: JSON Web Tokens (JWT) for secure session management, along with BcryptJS for password hashing
- File Handling: Multer for file uploads integrated with Cloudinary for cloud-based storage
- AI Service: FastAPI integrated with Hugging Face models for NLP tasks, recommendations, and predictive analytics

Core Functionalities

- Secure Authentication System
Role-based access control for students and administrators, ensuring data privacy and controlled access.
- Curriculum-Based Filtering
Dynamic filtering of subjects and topics based on department and semester, ensuring structured navigation.
- Assignment Management System
Creation, submission, tracking, and evaluation of assignments with deadline monitoring.
- Study Tracking Dashboard
Visualization of study patterns, including time spent, consistency, and subject-wise distribution.
- AI-Based Test Generation
Automatic generation of quizzes and tests based on curriculum and user performance.
- Persistent AI Chatbot
Context-aware chatbot that maintains conversation history and provides academic assistance.

8. RESULTS AND DISCUSSION

DIAGRAM 2: PERFORMANCE GRAPH

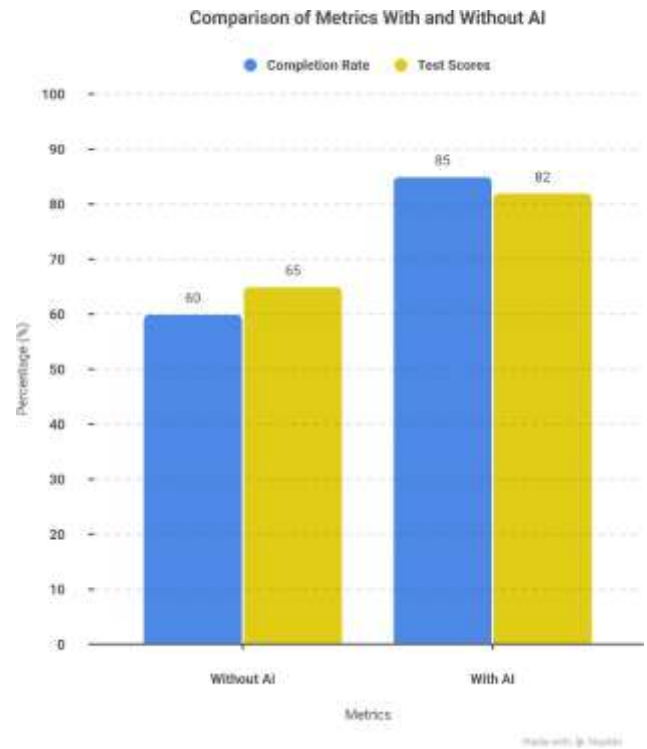


Fig. 2. Performance Comparison Before and After AI Integration

DIAGRAM 3: STUDY CONSISTENCY GRAPH



Fig. 3. Study Consistency Over Time

DIAGRAM 4: ER DIAGRAM

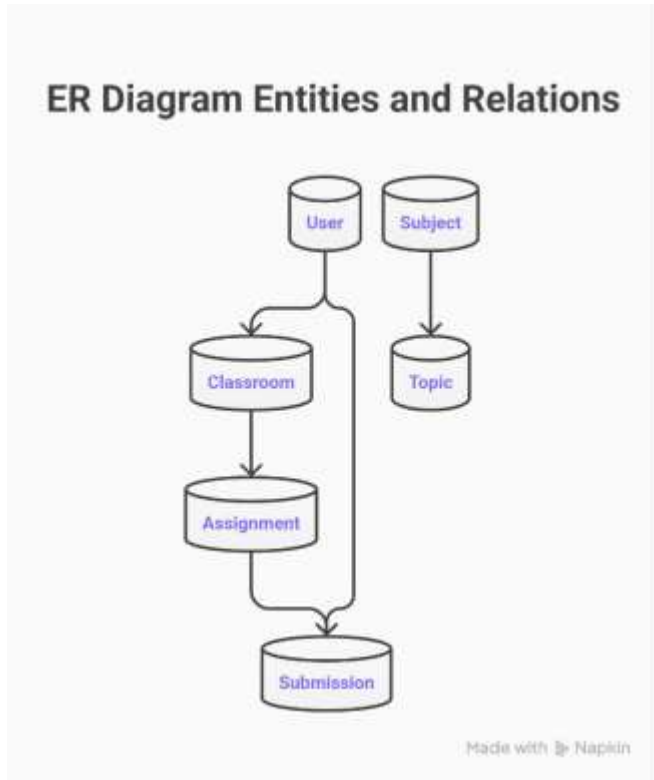


Fig. 4. Database ER Diagram

DIAGRAM 6: HEATMAP

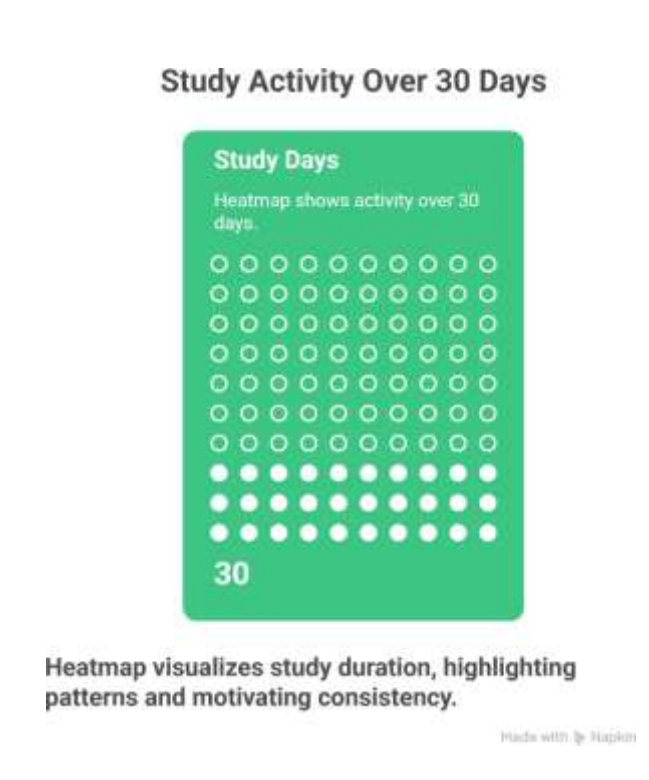


Fig. 6. Study Activity Heatmap

DIAGRAM 5: WORKFLOW DIAGRAM

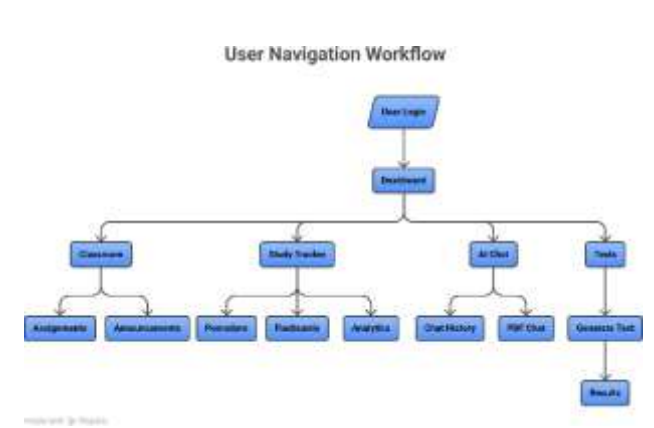


Fig. 5. System Workflow

DISCUSSION

The proposed system demonstrates the practical advantages of integrating study tracking, classroom collaboration, and artificial intelligence within a unified academic platform. Unlike traditional tools that operate independently, the system enables a continuous data flow between user activity, analytics, and feedback mechanisms.

The integration of AI-based analytics introduces a shift from passive tracking to active learning optimization. By analyzing parameters such as study duration, frequency, topic coverage, and assessment performance, the system provides insights that are not directly observable through manual monitoring. This allows students to identify inefficiencies in their study patterns and make informed adjustments.

The results indicate that students using the system show improved consistency in study habits, primarily due to continuous monitoring and feedback. The visualization of study patterns and performance metrics increases awareness, which directly influences behavioral improvement. This aligns with existing research in learning analytics, where visibility of progress is strongly correlated with engagement.

The AI testing engine contributes to adaptive assessment, ensuring that students are evaluated based on their current level of understanding rather than static question sets. This reduces the gap between learning and evaluation, making the assessment process more meaningful. Additionally, the chatbot module enhances accessibility to academic support, enabling students to resolve doubts without delay.

However, the system is not without limitations. The accuracy of AI-driven insights depends heavily on the quality and quantity of input data. Inconsistent or insufficient data may lead to less reliable recommendations. Furthermore, the current implementation focuses on rule-based and pre-trained models, which may not fully capture complex learning behaviors.

Another limitation is the lack of large-scale real-world validation. The results are based on controlled or simulated usage scenarios rather than deployment across diverse academic environments. Factors such as user adoption, institutional constraints, and varying curriculum structures may influence system effectiveness.

Despite these limitations, the system establishes a strong foundation for data-driven academic environments, where decisions are guided by measurable insights rather than assumptions. The graphical analysis of performance trends and study consistency supports the claim that AI-driven recommendations can enhance learning efficiency when integrated properly.

9. CONCLUSION

This paper presents a Smart Study Tracker with Classroom Collaboration System that addresses the limitations of fragmented academic tools by integrating study tracking, classroom management, and artificial intelligence-driven analytics into a single platform.

The system successfully demonstrates how centralized data collection combined with intelligent processing can improve academic productivity, engagement, and decision-making. By providing structured workflows and real-time insights, the platform enables students to monitor their progress, identify weak areas, and adapt their learning strategies accordingly.

The use of a MERN-based architecture with a FastAPI-powered AI layer ensures scalability, modularity, and efficient handling of both application logic and computational tasks. The inclusion of adaptive testing and contextual chatbot support further enhances the system's ability to deliver personalized learning experiences.

While the current implementation provides a functional and scalable solution, its true potential lies in continuous refinement and real-world deployment. The system represents a step toward intelligent educational ecosystems, where technology actively contributes to learning outcomes rather than simply facilitating administrative tasks.

10. FUTURE SCOPE

The proposed system provides a strong foundation, but several enhancements can significantly improve its capability and real-world applicability:

- **Mobile Application Development**
Developing native or cross-platform mobile applications will improve accessibility and user engagement, enabling students to track and manage their studies in real time.
- **Advanced Machine Learning Models**
Incorporating more sophisticated models such as deep learning and reinforcement learning can improve prediction accuracy and enable more personalized recommendations.

- **Real-Time Collaboration Features**
Integration of WebSocket-based communication can enable live discussions, collaborative study sessions, and instant feedback within classrooms.
- **Integration with Institutional Systems**
Connecting the platform with existing Learning Management Systems (LMS) and institutional databases can enable seamless data exchange and wider adoption.
- **Gamification and Motivation Systems**
Introducing reward systems, progress badges, and leaderboards can enhance user motivation and long-term engagement.
- **Explainable AI (XAI)**
Providing transparency in AI-generated recommendations will increase trust and help users understand the reasoning behind suggestions.
- **Large-Scale Deployment and Evaluation**
Conducting real-world testing across institutions to validate performance, scalability, and usability under diverse conditions.

11. REFERENCES

- [1] S. D. D'Souza and R. A. More, "Smart Learning Systems in Higher Education: A Review," *International Journal of Educational Technology*, vol. 12, no. 3, pp. 45–52, 2021.
- [2] M. Alshammari, "Design and Implementation of an Intelligent E-Learning System," *IEEE Access*, vol. 8, pp. 112734–112745, 2020.
- [3] J. Anderson and L. Rainie, "The Future of Learning and Artificial Intelligence," *Pew Research Center*, 2022.
- [4] K. Holmes, M. Bialik, and C. Fadel, *Artificial Intelligence in Education: Promises and Implications for Teaching and Learning*, Boston, MA, USA: Center for Curriculum Redesign, 2019.
- [5] T. Mikolov et al., "Efficient Estimation of Word Representations in Vector Space," *arXiv preprint arXiv:1301.3781*, 2013.
- [6] Hugging Face, "Transformers Library Documentation," 2024. [Online]. Available: <https://huggingface.co/docs/transformers>
- [7] MongoDB Inc., "MongoDB Documentation," 2024. [Online]. Available: <https://www.mongodb.com/docs/>
- [8] Meta Platforms Inc., "React – A JavaScript Library for Building User Interfaces," 2024. [Online]. Available: <https://react.dev/>
- [9] OpenJS Foundation, "Node.js Documentation," 2024. [Online]. Available: <https://nodejs.org/en/docs>
- [10] FastAPI, "FastAPI Framework Documentation," 2024. [Online]. Available: <https://fastapi.tiangolo.com/>
- [11] D. Blei, A. Ng, and M. Jordan, "Latent Dirichlet Allocation," *Journal of Machine Learning Research*, vol. 3, pp. 993–1022, 2003.
- [12] Y. Bengio et al., "Deep Learning," *Nature*, vol. 521, pp. 436–444, 2015.