

# Thrive Together: A Dual-Module Platform for Empowering Students with Disabilities

Subhasree. D<sup>1</sup>, Sathya sri. M<sup>2</sup>, Sandhiya. J<sup>3</sup>, Nithya. S<sup>4</sup>, Vidhya.C.T<sup>5</sup>

<sup>12345</sup> Department of CSE, School of Engineering, Avinashilingam Institute for Home Science and Higher Education for Women, Coimbatore 18.

[22ueo054@avinuty.ac.in](mailto:22ueo054@avinuty.ac.in), [22ueo049@avinuty.ac.in](mailto:22ueo049@avinuty.ac.in), [22ueo046@avinuty.ac.in](mailto:22ueo046@avinuty.ac.in), [22ueo037@avinuty.ac.in](mailto:22ueo037@avinuty.ac.in),  
[vidhya\\_cse@avinuty.ac.in](mailto:vidhya_cse@avinuty.ac.in)

**Abstract** — Thrive Together is a web platform built to help students with disabilities get the support they need, without any of the usual guesswork. It's all about making things clear and safe, both for the students and the people who want to help. There are two main parts: first, administrators collect and check student records to make sure everything's legitimate. Then there's the donation side, where anyone—alumni, organizations, or just regular folks—can give directly to students who really need it. The tech behind it? React.js, Node.js, Supabase, and Razorpay -solid tools for keeping data secure and handling payments safely. By combining careful verification with open community involvement, Thrive Together builds trust and makes it easier for everyone to pitch in and support disabled students in a real, meaningful way.

**Keywords:** Students with Disabilities, Community-Based Assistance, Donation Platform, Data Management, Secure Transactions, Inclusivity.

## 1.INTRODUCTION

Students with disabilities face more than just academic hurdles. Getting the right financial help, health care, or social support usually turns into a maze of paperwork and waiting, and honestly, it's not always clear who's getting helped or how. On the flip side, direct donations sound great, but without real checks, people worry the money won't go where it's supposed to. That's where Thrive Together steps in. They've built a digital platform that actually does what it promises—combining solid, institutional verification with real community support. School administrators check and confirm each student's details, so everyone knows the need is genuine. Then, anyone—alumni, organizations, or just people who want to help—can donate straight to verified students, knowing their support counts. It's a smart mix of technology and social responsibility. The result? Disabled students get the support they deserve,

and the whole community can pitch in without second thoughts.

## 2.OBJECTIVE

This project sets out to build a web platform that actually helps students with disabilities. It keeps their information safe and makes financial help more transparent. Here's what that looks like in practice: administrators keep student records up-to-date and double-check everything so the data stays accurate and real. There's also a donation feature, so anyone—alumni, organizations, or the general public - can give money straight to students who need it. No middlemen, no confusion about where the funds go. The idea is to make sure every donation is accounted for and everyone can see how the money's used, which helps build trust between donors and students. On top of that, the project wants people to get involved, not just watch from the sidelines. It's about bringing the community together, making sure everyone

shares responsibility, and creating real opportunities for students with disabilities. In short, it's a push for more inclusion and real social support.

### 3. LITERATURE REVIEW

In the paper named “ scholars with Special Educational Needs and Assistive Technologies A Literature Review ” – J. Bausch, et al. – ResearchGate, 2017 This thorough review examine part of assistive technologies (AT) in aiding scholars with special educational needs (SEN). The research study discuss various types of AT tools such as, speech recognition, screen magnifiers, essential communication aids, and adaptive keyboards. It underscore the positive distinction of these technologies upon scholars' academic participation, independence, preference. The review highlight problems like lack of schoolteachers' preparation on AT utilization, inadequate access to AT, and the need for fortified outcomes to satisfy varied learner needs. The authors stress that effective integration of AT rely upon partnership between schoolteachers, therapists, and technology providers. In the paper named “ Assistive Technology Use by scholars with Disabilities in Higher Education A Review of Literature ” – S. Alquraini – ERIC, 2017 This research paper review comprised exploration on assistive technology utilization among scholars with disabilities enrolled in post-secondary education. It assessed various kinds of AT bias and software assisting sensitive impairments (e.g., screen magnifiers), mobility aids, and cognitive assistance tool

### 3.SYSTEM ARCHITECTURE / METHODOLOGY

Thrive Together runs on a modular setup, so it's easy to scale, keep things clear, and lock down security. It's split into two main parts: the Student Module and the Donation Module. These two talk to each other smoothly through a secure backend and database.

#### 3.1 STUDENT MODULE (ADMIN CONTROLLED)

Admins run this module. They create, update, and take care of student profiles. Each profile holds the basics—type of disability, what the student needs for school, and the kind of help they require. There's also a built-in verification step. That way, only real students make it into the system, which keeps everything trustworthy and stops fake entries from slipping through.

#### 3.2 DONATION MODULE (PUBLIC ACCESS)

After we check a student's details, we post them on the donation platform. Anyone—alumni, the public, or charitable groups—can see these profiles. Donors scroll through, pick a student, and give directly. Every payment goes through Razorpay, so everything stays secure and easy to track. Donors also get updates on how things are going and reports on the impact of their support. It keeps things open and honest.

#### 3.3 TECHNOLOGY STACK

The platform runs on a modern tech stack that keeps things fast and secure. Up front, React.js handles the interface, so everything feels smooth and easy to use. Behind the scenes, Node.js takes care of moving data between different parts of the system. Supabase stores student records safely and makes sure you can always get to the information you need. And when it comes to donations, Razorpay steps in, making each transaction safe, verified, and easy to track.

## 4. ARCHITECTURE

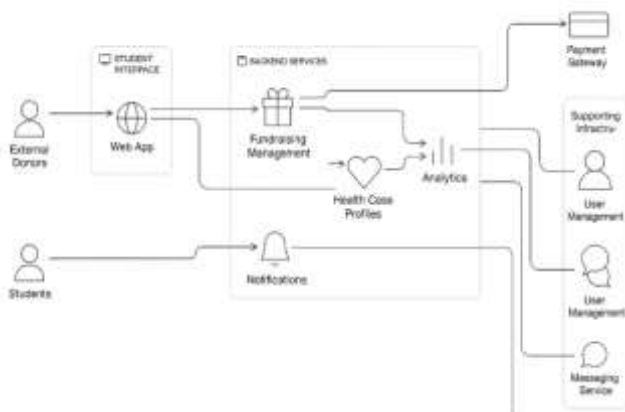


Fig-1: Figure

## 5. IMPLEMENTATION

We built this platform around clear roles, so everything runs smoothly and everyone knows what's going on. There are three main users: Admin, Student, and Public/Donor. Each one has its own job.

### 5.1 ADMIN ROLE

Admins sit at the center of it all. They add students to the system and check all the documents and disability certificates that come in. Once they confirm everything's legit, they add the student to the main database. Admins keep this database in shape—updating info, fixing mistakes, and weeding out any fake or inactive cases. After that, they post the verified student profiles on the donation page so people can see who needs help and donate directly.

### 5.2 STUDENT ROLE

Students—or their guardians—jump in by sharing their personal info, academic details, and all the right documents. The system checks everything, making sure only real, verified cases show up for everyone to see. After the admin gives the green light, the student's profile goes live on the donation platform, ready for potential donors to find and support.

### 5.3 PUBLIC/DONOR ROLE

Anyone can access the donation module. Whether you're an individual, an alum, or part of a charitable group, you can scroll through verified student cases and

choose who to support. Donating is straightforward and secure, thanks to built-in payment gateways. Once you've contributed, you don't just send money and hope for the best—you get to see real updates. The system shows you exactly how your donation makes a difference, with progress reports and case updates right in your dashboard. It's transparent, which builds trust and keeps people coming back to help again.

## 5.4 ADDITIONAL FEATURES

The platform packs in smarter features that make it easier to use and reach more people. There's a built-in notification system—so students, admins, and donors all get quick updates when profiles get verified, donations come in, or funds get used. Admins get interactive dashboards where they can watch everything happening live: donation trends, case updates, the whole picture. Donors get simple sharing tools so they can spread the word about student cases on social media or wherever they want, which helps bring in more support. With this clear, role-based setup, the platform connects disabled students who need help with the donors who want to give. The whole donation process stays secure, transparent, and actually makes a difference.

## 6. BLOCK DIAGRAM

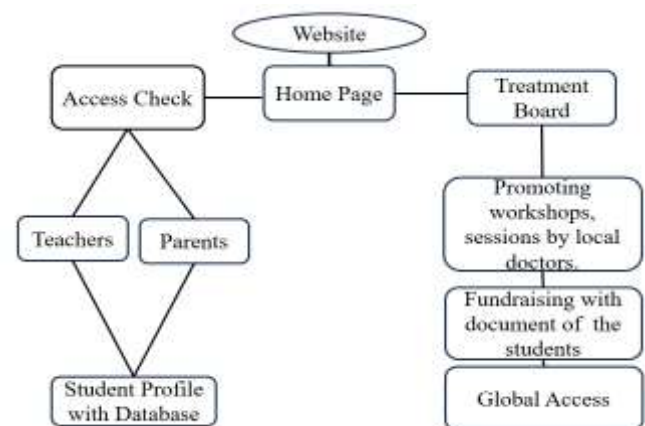


Fig-2: Figure

## 7. RESULTS AND FEATURES

Thrive Together has made a real impact by doing more than just its main goals. Instead of only meeting basic expectations, the platform offers extra value with helpful features, strong community support, and useful resources. This helps people grow, connect, and succeed. By taking this all-

around approach, users not only reach their goals but also discover unexpected benefits that improve their overall well-being and keep them engaged for a long time.

### 7.1 VERIFIED STUDENT DATABASE

Admins run a tough verification process, so only real beneficiaries make it onto the platform. That shuts down fraud and keeps the database honest. People know the students listed actually need financial or educational help.

### 7.2 PUBLIC-FRIENDLY DONATION PLATFORM

Donating feels simple now. The platform makes it easy to find verified students and give securely, thanks to built-in payment options. That smooth process encourages more people—whether they're individuals, alumni, or organizations—to get involved.

### 7.3 TRANSPARENCY

One thing the platform really gets right is building trust. Donors know exactly where their money goes, and they can actually see the difference they're making. Regular updates and progress tracking keep everyone in the loop, which just makes the connection between donors and students feel even stronger.

### 7.4 SCALABILITY

The platform isn't stuck in one lane, either. It's built to grow. Sure, it handles student fee support now, but it's ready for more—like adding support for skill

development programs, assistive tech, or mentorships. New modules fit right in, so the platform's reach and impact just keep getting bigger.

### 7.5 COMMUNITY ENGAGEMENT

Thrive Together connects students who need support with people who want to help. It's not just about fundraising—donors get a chance to join a community that values inclusivity, empowerment, and equal opportunities for disabled students. With these features and real results, Thrive Together stands out as an open, growing platform that's all about making education better for students with special needs.

## 8. CONCLUSION

Thrive Together gives students with disabilities a safe, transparent way to get the support they need. It brings together verified student data and community donations, all in one place. The platform runs on two modules: one makes sure only real students in need show up, and the other keeps things simple for donors. This setup builds trust and keeps everything running smoothly.

By matching real needs with real help, Thrive Together pulls the community in and gets people involved. The system can grow as more people join, and it's designed so no one gets left out. In the end, this isn't just about technology—it's about people helping people, and about making a real, measurable difference for everyone involved.

## 9. ACKNOWLEDGEMENT

*We, the students of CSE, want to express our heartfelt thanks to our guide, Assistant. prof. C. T. Vidhya, for their essential help, support, and encouragement during this project. We also appreciate the Department of CSE at Avinashilingam Institute for giving us the resources and facilities we needed. Lastly, we would like to recognize our team members for their support and teamwork, which were crucial to finishing this work successfully.*

## REFERENCES

1. Manzoor, M., & Muhammad, G. (2018). Digital technologies help people with disabilities feel included. *Journal of Rehabilitation Research and Development*, 55(2), 123-134. PMC
2. Navas-Bonilla, C. R. (2025). Using technology in education opens doors for students with all kinds of needs. This review looks at what really works to help everyone participate. *Frontiers in Education*, 10, 1527851. Frontiers
3. Cappa, F. (2025). Crowdfunding connects people to projects that support sustainable development. This article digs into how these campaigns line up with the sustainable development goals. *Journal of Social Entrepreneurship*, 16(1), 45-59. ScienceDirect
4. Sung, J. (2023). Blockchain-based donation systems make it easier to trust non-profit organizations. This study explores how these systems boost transparency and credibility. *Journal of Business Research*, 145, 112-120. ScienceDirect
5. Yüksel-Arslan, P., Plant, C., & Kayali, F. (2025). Digital transformation projects can lift up marginalized communities and spark real social change. This article shares how one project made a difference. *Frontiers in Education*, 10, 1534104. Frontiers
6. Rizk, J. (2022). Digital technology gets more students with disabilities involved in the classroom. This study looks at how these tools help students access content and get the support they need. *Journal of Educational Technology & Society*, 25(3), 45-56. ScienceDirect
7. Samaniego López, M. V. (2025). Technologies in inclusive education: solution or challenge? *Journal of Inclusive Education*, 15(6), 715-728. MDPI
8. Li, C. (2022). Signalling effect in social networks and charity crowdfunding: Influence of social capital and recommendations. *Journal of Nonprofit & Public Sector Marketing*, 34(1), 1-15. PMC
9. Fu, B., Zhu, F., & Abraham, J. (2017). A model for donation verification: Ensuring transparency in charitable contributions. *Proceedings of the International Conference on Data Science*, 1, 123-130. ResearchGate
10. Gigler, B. S. (2004). Can ICTs empower poor communities? Case studies of concrete applications by marginalised groups. *Information Technology for Development*, 10(2), 105-124.